

# β Tubulin (PL-B25): sc-134234

## BACKGROUND

Tubulin is a major cytoskeleton component that has five distinct forms, designated  $\alpha$ ,  $\beta$ ,  $\gamma$ ,  $\delta$  and  $\epsilon$  tubulin.  $\alpha$  and  $\beta$  Tubulins form heterodimers which multimerize to form a microtubule filament. Multiple  $\beta$  Tubulin isoforms ( $\beta$ 1,  $\beta$ 2,  $\beta$ 3,  $\beta$ 4,  $\beta$ 5,  $\beta$ 6 and  $\beta$ 8) have been characterized and are expressed in mammalian tissues.  $\beta$ 1 and  $\beta$ 4 are present throughout the cytosol,  $\beta$ 2 is present in the nuclei and nucleoplasm, and  $\beta$ 3 is a neuron-specific cytoskeletal protein.  $\gamma$  Tubulin forms the gammasome, which is required for nucleating microtubule filaments at the centrosome. Both  $\delta$  Tubulin and  $\epsilon$  Tubulin are associated with the centrosome.  $\delta$  Tubulin is a homolog of the *Chlamydomonas*  $\delta$  Tubulin Uni3 and is found in association with the centrioles, whereas  $\epsilon$  Tubulin localizes to the pericentriolar material.  $\epsilon$  Tubulin exhibits a cell cycle-specific pattern of localization; first associating with only the older of the centrosomes in a newly duplicated pair, and later associating with both centrosomes.

## REFERENCES

- Weisenberg, R. 1981. Invited review: the role of nucleotide triphosphate in Actin and Tubulin assembly and function. *Cell Motil.* 1: 485-497.
- Burns, R.G. 1991.  $\alpha$ ,  $\beta$ , and  $\gamma$  Tubulins: sequence comparisons and structural constraints. *Cell Motil. Cytoskeleton* 20: 181-189.
- Zheng, Y., Jung, M.K. and Oakley, B.R. 1991.  $\gamma$  Tubulin is present in *Drosophila melanogaster* and *Homo sapiens* and is associated with the centrosome. *Cell* 65: 817-823.
- Leask, A. and Stearns, T. 1998. Expression of amino- and carboxyl-terminal  $\gamma$  and  $\beta$  Tubulin mutants in cultured epithelial cells. *J. Biol. Chem.* 273: 2661-2668.
- Luduena, R.F. 1998. Multiple forms of Tubulin: different gene products and covalent modifications. *Int. Rev. Cytol.* 178: 207-275.
- Walsh, C., Kreisberg, J.I. and Luduena, R.F. 1999. Presence of the  $\beta$ 2 iso-type of Tubulin in the nuclei of cultured mesangial cells from rat kidney. *Cell Motil. Cytoskeleton* 42: 274-284.
- Modig, C., Olsson, P.E., Barasoain, I., de Ines, C., Andreu, J.M., Roach, M.C., Luduena, R.F. and Wallin, M. 1999. Identification of  $\beta$ 3 and  $\beta$ 4 Tubulin iso-types in cold-adapted microtubules from Atlantic cod (*Gadus morhua*): antibody mapping and cDNA sequencing. *Cell Motil. Cytoskeleton* 42: 315-330.
- Woulfe, J. and Munoz, D. 2000. Tubulin immunoreactive neuronal intranuclear inclusions in the human brain. *Neuropathol. Appl. Neurobiol.* 26: 161-171.
- Chang, P. and Stearns, T. 2000.  $\delta$  Tubulin and  $\epsilon$  Tubulin: two new human centrosomal Tubulins reveal new aspects of centrosome structure and function. *Nat. Cell Biol.* 2: 30-35.

## CHROMOSOMAL LOCATION

Genetic locus: TUBB (human) mapping to 6p21.33.

## STORAGE

Store at 4° C, \*\*DO NOT FREEZE\*\*. Stable for one year from the date of shipment. Non-hazardous. No MSDS required.

## SOURCE

$\beta$  Tubulin (PL-B25) is a mouse monoclonal antibody raised against recombinant  $\beta$ 5 Tubulin protein of human origin.

## PRODUCT

Each vial contains 100  $\mu$ g IgG<sub>2a</sub> in 1.0 ml PBS with < 0.1% sodium azide and 0.1% gelatin.

## APPLICATIONS

$\beta$  Tubulin (PL-B25) is recommended for detection of  $\beta$  Tubulin of human origin by Western Blotting (starting dilution 1:200, dilution range 1:100-1:1000), immunoprecipitation [1-2  $\mu$ g per 100-500  $\mu$ g of total protein (1 ml of cell lysate)] and solid phase ELISA (starting dilution 1:30, dilution range 1:30-1:3000).

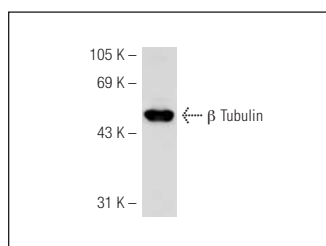
Molecular Weight of  $\beta$  Tubulin: 55 kDa.

Positive Controls: BJAB whole cell lysate: sc-2207, K-562 whole cell lysate: sc-2203 or HeLa whole cell lysate: sc-2200.

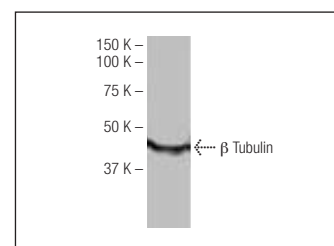
## RECOMMENDED SECONDARY REAGENTS

To ensure optimal results, the following support (secondary) reagents are recommended: 1) Western Blotting: use goat anti-mouse IgG-HRP: sc-2005 (dilution range: 1:2000-1:32,000) or Cruz Marker™ compatible goat anti-mouse IgG-HRP: sc-2031 (dilution range: 1:2000-1:5000), Cruz Marker™ Molecular Weight Standards: sc-2035, TBS Blotto A Blocking Reagent: sc-2333 and Western Blotting Luminol Reagent: sc-2048. 2) Immunoprecipitation: use Protein A/G PLUS-Agarose: sc-2003 (0.5 ml agarose/2.0 ml).

## DATA



$\beta$  Tubulin (PL-B25): sc-134234. Western blot analysis of  $\beta$  Tubulin expression in A-431 whole cell lysate.



$\beta$  Tubulin (PL-B25): sc-134234. Western blot analysis of  $\beta$ 5 Tubulin expression in Y79 whole cell lysate.

## RESEARCH USE

For research use only, not for use in diagnostic procedures.

## PROTOCOLS

See our web site at [www.scbt.com](http://www.scbt.com) or our catalog for detailed protocols and support products.