

EN-1 (3-RY3): sc-134328

BACKGROUND

The engrailed-1 gene, EN-1, a murine homolog of the *Drosophila* homeobox gene engrailed (EN), is required for midbrain and cerebellum development and dorsal/ventral patterning of the limbs as well as apical ectodermal ridge formation. In *Drosophila*, the EN gene plays an important role during development in segmentation, where it is required for the formation of posterior compartments. Human EN-1 and EN-2 are homeodomain-containing proteins and have been implicated in the control of pattern formation during development of the central nervous system. Different mutations in the mouse homologs, EN-1 and EN-2, produce different developmental defects that frequently are lethal. EN-1 is highly expressed by essentially all dopaminergic neurons in the substantia nigra and ventral tegmentum. EN-1 and EN-2 regulate expression of α -synuclein, a gene that is genetically linked to Parkinson's disease.

REFERENCES

1. Kohler, A., et al. 1993. Regional assignment of the human homeobox-containing gene EN1 to chromosome 2q13-q21. *Genomics* 15: 233-235.
2. Hanks, M.C., et al. 1998. *Drosophila* engrailed can substitute for mouse engrailed-1 function in mid-hindbrain, but not limb development. *Development* 125: 4521-4530.
3. Ohuchi, H., et al. 1999. FGF-10 can induce FGF-8 expression concomitantly with EN-1 and R-fng expression in chick limb ectoderm, independent of its dorsoventral specification. *Dev. Growth Differ.* 41: 665-673.
4. Gemel, J., et al. 1999. Fibroblast growth factor-8 expression is regulated by intronic engrailed and Pbx 1-binding sites. *J. Biol. Chem.* 274: 6020-6026.
5. Simon, H.H., et al. 2001. Fate of midbrain dopaminergic neurons controlled by the engrailed genes. *J. Neurosci.* 21: 3126-3134.
6. Simon H.H., et al. 2004. Midbrain dopaminergic neurons: control of their cell fate by the engrailed transcription factors. *Cell Tissue Res.* 318: 53-61.
7. Alberi L., et al. 2004. Engrailed genes are cell-autonomously required to prevent apoptosis in mesencephalic dopaminergic neurons. *Development* 131: 3229-3236.
8. LocusLink Report (LocusID: 2019). <http://www.ncbi.nlm.nih.gov/LocusLink/>

CHROMOSOMAL LOCATION

Genetic locus: EN1 (human) mapping to 2q14.2; En1 (mouse) mapping to 1 E2.3.

SOURCE

EN-1 (3-RY3) is a mouse monoclonal antibody raised against recombinant EN-1 protein of human origin.

PRODUCT

Each vial contains 100 μ g IgG_{2a} kappa light chain in 1.0 ml of PBS with < 0.1% sodium azide and 0.1% gelatin.

RESEARCH USE

For research use only, not for use in diagnostic procedures.

APPLICATIONS

EN-1 (3-RY3) is recommended for detection of EN-1 of mouse, rat and human origin by Western Blotting (starting dilution 1:200, dilution range 1:100-1:1000), immunoprecipitation [1-2 μ g per 100-500 μ g of total protein (1 ml of cell lysate)] and solid phase ELISA (starting dilution 1:30, dilution range 1:30-1:3000).

Suitable for use as control antibody for EN-1 siRNA (h): sc-43752, EN-1 siRNA (m): sc-45653, EN-1 shRNA Plasmid (h): sc-43752-SH, EN-1 shRNA Plasmid (m): sc-45653-SH, EN-1 shRNA (h) Lentiviral Particles: sc-43752-V and EN-1 shRNA (m) Lentiviral Particles: sc-45653-V.

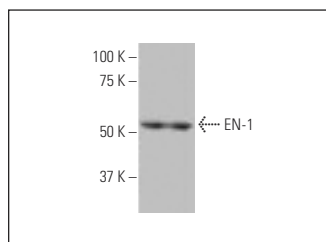
Molecular Weight of EN-1: 40 kDa.

Positive Controls: Jurkat whole cell lysate: sc-2204, PC-3 nuclear extract: sc-2152 or P19 cell lysate: sc-24760.

RECOMMENDED SUPPORT REAGENTS

To ensure optimal results, the following support reagents are recommended: 1) Western Blotting: use m-IgG κ BP-HRP: sc-516102 or m-IgG κ BP-HRP (Cruz Marker): sc-516102-CM (dilution range: 1:1000-1:10000), Cruz Marker™ Molecular Weight Standards: sc-2035, UltraCruz® Blocking Reagent: sc-516214 and Western Blotting Luminol Reagent: sc-2048. 2) Immunoprecipitation: use Protein A/G PLUS-Agarose: sc-2003 (0.5 ml agarose/2.0 ml).

DATA



EN-1 (3-RY3): sc-134328. Western blot analysis of EN-1 expression in Jurkat whole cell lysate.

STORAGE

Store at 4° C, **DO NOT FREEZE**. Stable for one year from the date of shipment. Non-hazardous. No MSDS required.

PROTOCOLS

See our web site at www.scbt.com for detailed protocols and support products.