

HLA-DM α (NB-B33): sc-134356

BACKGROUND

Peptide (antigen) binding to major histocompatibility complex (MHC) class II molecules destined for presentation to CD4⁺ helper T cells is determined by two key events. These include the dissociation of class II-associated invariant chain peptides (CLIP) from an antigen binding groove in MHC II-ly dimers and by the activity of MHC molecules HLA-DM and -DO. Accumulating in endosomal/lysosomal compartments and on the surface of B cells, HLA-DM and -DO molecules regulate the dissociation of CLIP and the subsequent binding of exogenous peptides to HLA class II molecules (HLA-DR) by sustaining a conformation that favors peptide exchange. RFLP analysis of HLA-DM genes from rheumatoid arthritis (RA) patients suggests that certain polymorphisms are genetic factors for RA susceptibility.

REFERENCES

1. Kropshofer, H., et al. 1998. A role for HLA-DO as a co-chaperone of HLA-DM in peptide loading of MHC class II molecules. *EMBO J.* 17: 2971-2981.
2. Siegmund, T., et al. 1999. HLA-DMA and HLA-DMB alleles in German patients with type 1 diabetes mellitus. *Tissue Antigens* 54: 291-294.
3. Arndt, S.O., et al. 2000. Functional HLA-DM on the surface of B cells and immature dendritic cells. *EMBO J.* 19: 1241-1251.
4. Brunet, A., et al. 2000. Functional characterization of a lysosomal sorting motif in the cytoplasmic tail of HLA-DO β . *J. Biol. Chem.* 275: 37062-37071.
5. Doebele, C.R., et al. 2000. Determination of the HLA-DM interaction site on HLA-DR molecules. *Immunity* 13: 517-527.
6. Louis-Pence, P., et al. 2000. The down-regulation of HLA-DM gene expression in rheumatoid arthritis is not related to their promoter polymorphism. *J. Immunol.* 165: 4861-4869.
7. Toussiroit, E., et al. 2000. The association of HLA-DM genes with rheumatoid arthritis in Eastern France. *Hum. Immunol.* 61: 303-308.

CHROMOSOMAL LOCATION

Genetic locus: HLA-DMA (human) mapping to 6p21.32.

SOURCE

HLA-DM α (NB-B33) is a mouse monoclonal antibody raised against recombinant HLA-DM α protein of human origin.

PRODUCT

Each vial contains 100 μ g IgG₁ kappa light chain in 1.0 ml of PBS with < 0.1% sodium azide and 0.1% gelatin.

STORAGE

Store at 4° C, ****DO NOT FREEZE****. Stable for one year from the date of shipment. Non-hazardous. No MSDS required.

PROTOCOLS

See our web site at www.scbt.com for detailed protocols and support products.

APPLICATIONS

HLA-DM α (NB-B33) is recommended for detection of HLA-DM α of human origin by Western Blotting (starting dilution 1:200, dilution range 1:100-1:1000), immunoprecipitation [1-2 μ g per 100-500 μ g of total protein (1 ml of cell lysate)], immunofluorescence (starting dilution 1:50, dilution range 1:50-1:500), immunohistochemistry (including paraffin-embedded sections) (starting dilution 1:50, dilution range 1:50-1:500) and solid phase ELISA (starting dilution 1:30, dilution range 1:30-1:3000).

Suitable for use as control antibody for HLA-DM α siRNA (h): sc-42909, HLA-DM α shRNA Plasmid (h): sc-42909-SH and HLA-DM α shRNA (h) Lentiviral Particles: sc-42909-V.

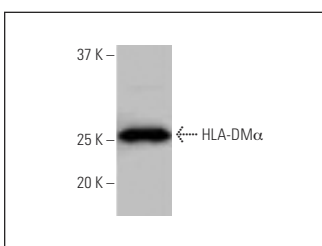
Molecular Weight of HLA-DM α : 29 kDa.

Positive Controls: U-2 OS cell lysate: sc-2295.

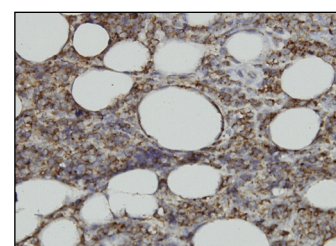
RECOMMENDED SUPPORT REAGENTS

To ensure optimal results, the following support reagents are recommended: 1) Western Blotting: use m-IgG κ BP-HRP: sc-516102 or m-IgG κ BP-HRP (Cruz Marker): sc-516102-CM (dilution range: 1:1000-1:10000), Cruz Marker™ Molecular Weight Standards: sc-2035, UltraCruz® Blocking Reagent: sc-516214 and Western Blotting Luminol Reagent: sc-2048. 2) Immunoprecipitation: use Protein A/G PLUS-Agarose: sc-2003 (0.5 ml agarose/2.0 ml). 3) Immunofluorescence: use m-IgG κ BP-FITC: sc-516140 or m-IgG κ BP-PE: sc-516141 (dilution range: 1:50-1:200) with UltraCruz® Mounting Medium: sc-24941 or UltraCruz® Hard-set Mounting Medium: sc-359850. 4) Immunohistochemistry: use m-IgG κ BP-HRP: sc-516102 with DAB, 50X: sc-24982 and Immunohistomount: sc-45086, or Organo/Limonene Mount: sc-45087.

DATA



HLA-DM α (NB-B33): sc-134356. Western blot analysis of HLA-DM α expression in U-2 OS whole cell lysate.



HLA-DM α (NB-B33): sc-134356. Immunoperoxidase staining of formalin-fixed, paraffin-embedded human malignant lymphoma, diffuse large B tissue showing membrane localization.

SELECT PRODUCT CITATIONS

1. Yin, X., et al. 2022. Identification of novel prognostic targets in glioblastoma using bioinformatics analysis. *Biomed. Eng. Online* 21: 26.

RESEARCH USE

For research use only, not for use in diagnostic procedures.