

KLF8 (12D2): sc-134375

BACKGROUND

The Krüppel-type zinc finger transcription factors comprise a conserved family of DNA binding proteins that are important in developmental regulation. The Krüppel zinc finger transcription factor was initially identified in *Drosophila* as a segmentation gene. Krüppel-like factor 8 (KLF8), also called basic Krüppel-like factor 3 and zinc finger protein 741, is a 359 amino acid transcriptional repressor that binds CACCC elements in DNA and activates or represses their target genes in a context-dependent manner. KLF8 is expressed ubiquitously in the nucleus of many cell types and its expression is elevated in several human cancers. KLF8 is post-translationally modified and negatively regulated by sumoylation via SUMO-1, SUMO-2 or SUMO-3. Mutation of the sumoylation site, Lysine 67, to Arginine 67 enhances the ability of KLF8 to repress or activate its target promoters.

REFERENCES

- van Vliet, J., Turner, J. and Crossley, M. 2000. Human Krüppel-like factor 8: a CACCC-box binding protein that associates with CtBP and represses transcription. *Nucleic Acids Res.* 28: 1955-1962.
- Lossi, A.M., Laugier-Anfossi, F., Depetris, D., Gecz, J., Gedeon, A., Kooy, F., Schwartz, C., Mattei, M.G., Croquette, M.F. and Villard, L. 2002. Abnormal expression of the KLF8 (ZNF741) gene in a female patient with an X; autosomal translocation t(X;21)(p11.2;q22.3) and non-syndromic mental retardation. *J. Med. Genet.* 39: 113-117.
- Zhao, J., Bian, Z.C., Yee, K., Chen, B.P., Chien, S. and Guan, J.L. 2003. Identification of transcription factor KLF8 as a downstream target of focal adhesion kinase in its regulation of cyclin D1 and cell cycle progression. *Mol. Cell* 11: 1503-1515.
- Chiambaretta, F., De Graeve, F., Turet, G., Marceau, G., Gain, P., Dastugue, B., Rigal, D. and Sapin, V. 2004. Cell and tissue specific expression of human Krüppel-like transcription factors in human ocular surface. *Mol. Vis.* 10: 901-909.
- Cox, B.D., Natarajan, M., Stettner, M.R. and Gladson, C.L. 2006. New concepts regarding focal adhesion kinase promotion of cell migration and proliferation. *J. Cell. Biochem.* 99: 35-52.
- Wei, H., Wang, X., Gan, B., Urvalek, A.M., Melkounian, Z.K., Guan, J.L. and Zhao, J. 2006. Sumoylation delimits KLF8 transcriptional activity associated with the cell cycle regulation. *J. Biol. Chem.* 281: 16664-16671.
- Hu, J.H., Navas, P., Cao, H., Stamatoyannopoulos, G. and Song, C.Z. 2007. Systematic RNAi studies on the role of Sp/KLF factors in globin gene expression and erythroid differentiation. *J. Mol. Biol.* 366: 1064-1073.
- Wang, X. and Zhao, J. 2007. KLF8 transcription factor participates in oncogenic transformation. *Oncogene* 26: 456-461.

CHROMOSOMAL LOCATION

Genetic locus: KLF8 (human) mapping to Xp11.21.

SOURCE

KLF8 (12D2) is a mouse monoclonal antibody raised against recombinant KLF8 protein of human origin.

PRODUCT

Each vial contains 100 µg IgG_{2a} kappa light chain in 1.0 ml of PBS with < 0.1% sodium azide and 0.1% gelatin.

APPLICATIONS

KLF8 (12D2) is recommended for detection of KLF8 of human origin by Western Blotting (starting dilution 1:200, dilution range 1:100-1:1000), immunoprecipitation [1-2 µg per 100-500 µg of total protein (1 ml of cell lysate)] and solid phase ELISA (starting dilution 1:30, dilution range 1:30-1:3000).

Suitable for use as control antibody for KLF8 siRNA (h): sc-75390, KLF8 shRNA Plasmid (h): sc-75390-SH and KLF8 shRNA (h) Lentiviral Particles: sc-75390-V.

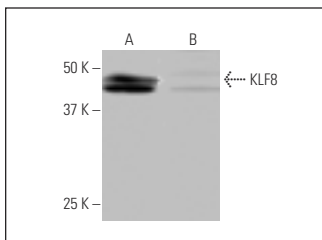
Molecular Weight of KLF8: 39 kDa.

Positive Controls: Hep G2 Cell Lysate : sc-2227 or human KLF8 transfected 293T whole cell lysate.

RECOMMENDED SUPPORT REAGENTS

To ensure optimal results, the following support reagents are recommended: 1) Western Blotting: use m-IgGκ BP-HRP: sc-516102 or m-IgGκ BP-HRP (Cruz Marker): sc-516102-CM (dilution range: 1:1000-1:10000), Cruz Marker™ Molecular Weight Standards: sc-2035, UltraCruz® Blocking Reagent: sc-516214 and Western Blotting Luminol Reagent: sc-2048. 2) Immunoprecipitation: use Protein A/G PLUS-Agarose: sc-2003 (0.5 ml agarose/2.0 ml).

DATA



KLF8 (12D2): sc-134375. Western blot analysis of KLF8 expression in human KLF8 transfected (A) and non-transfected (B) 293T whole cell lysates.

STORAGE

Store at 4° C, **DO NOT FREEZE**. Stable for one year from the date of shipment. Non-hazardous. No MSDS required.

RESEARCH USE

For research use only, not for use in diagnostic procedures.

PROTOCOLS

See our web site at www.scbt.com for detailed protocols and support products.