

MRP-S25 (LB-L4): sc-134393

BACKGROUND

Mammalian mitochondrial ribosomes (mitoribosomes) are responsible for protein synthesis within the mitochondrion. The mitoribosomes are composed of a 4:1 ratio of protein to RNA, with the proteins forming two subunits, the 28S subunit and the 39S subunit. Across species, the proteins that make up the mitoribosome subunits vary greatly in sequence, preventing easy recognition by sequence homology. MRP-S25 (mitochondrial 28S ribosomal protein S25), also known as S25mt, is a 173 amino acid mitochondrial ribosomal protein belonging to the ribosomal protein S25/L51 family. Localized to mitochondria, MRP-S25 is present in the 28S subunit of the mitoribosomes.

REFERENCES

- Hattori, A., Okumura, K., Nagase, T., Kikuno, R., Hirose, M. and Ohara, O. 2000. Characterization of long cDNA clones from human adult spleen. *DNA Res.* 7: 357-366.
- Koc, E.C., Burkhart, W., Blackburn, K., Moseley, A., Koc, H. and Spremulli, L.L. 2000. A proteomics approach to the identification of mammalian mitochondrial small subunit ribosomal proteins. *J. Biol. Chem.* 275: 32585-32591.
- Cavdar Koc, E., Burkhart, W., Blackburn, K., Moseley, A. and Spremulli, L.L. 2001. The small subunit of the mammalian mitochondrial ribosome. Identification of the full complement of ribosomal proteins present. *J. Biol. Chem.* 276: 19363-19374.
- Kenmochi, N., Suzuki, T., Uechi, T., Magoori, M., Kuniba, M., Higa, S., Watanabe, K. and Tanaka, T. 2001. The human mitochondrial ribosomal protein genes: mapping of 54 genes to the chromosomes and implications for human disorders. *Genomics* 77: 65-70.
- Zhang, Z. and Gerstein, M. 2003. Identification and characterization of over 100 mitochondrial ribosomal protein pseudogenes in the human genome. *Genomics* 81: 468-480.
- Online Mendelian Inheritance in Man, OMIM[™]. 2008. Johns Hopkins University, Baltimore, MD. MIM Number: 611987. World Wide Web URL: <http://www.ncbi.nlm.nih.gov/omim/>

CHROMOSOMAL LOCATION

Genetic locus: MRPS25 (human) mapping to 3p25.1; Mrps25 (mouse) mapping to 6 D1.

SOURCE

MRP-S25 (LB-L4) is a mouse monoclonal antibody raised against recombinant MRP-S25 protein of human origin.

PRODUCT

Each vial contains 100 µg IgG_{2a} kappa light chain in 1.0 ml of PBS with < 0.1% sodium azide and 0.1% gelatin.

STORAGE

Store at 4° C, ****DO NOT FREEZE****. Stable for one year from the date of shipment. Non-hazardous. No MSDS required.

APPLICATIONS

MRP-S25 (LB-L4) is recommended for detection of MRP-S25 of mouse, rat and human origin by Western Blotting (starting dilution 1:200, dilution range 1:100-1:1000), immunoprecipitation [1-2 µg per 100-500 µg of total protein (1 ml of cell lysate)] and solid phase ELISA (starting dilution 1:30, dilution range 1:30-1:3000).

Suitable for use as control antibody for MRP-S25 siRNA (h): sc-77951, MRP-S25 siRNA (m): sc-149625, MRP-S25 shRNA Plasmid (h): sc-77951-SH, MRP-S25 shRNA Plasmid (m): sc-149625-SH, MRP-S25 shRNA (h) Lentiviral Particles: sc-77951-V and MRP-S25 shRNA (m) Lentiviral Particles: sc-149625-V.

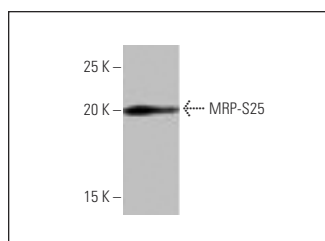
Molecular Weight of MRP-S25: 20 kDa.

Positive Controls: NIH/3T3 whole cell lysate: sc-2210.

RECOMMENDED SUPPORT REAGENTS

To ensure optimal results, the following support reagents are recommended: 1) Western Blotting: use m-IgGκ BP-HRP: sc-516102 or m-IgGκ BP-HRP (Cruz Marker): sc-516102-CM (dilution range: 1:1000-1:10000), Cruz Marker[™] Molecular Weight Standards: sc-2035, UltraCruz[®] Blocking Reagent: sc-516214 and Western Blotting Luminol Reagent: sc-2048. 2) Immunoprecipitation: use Protein A/G PLUS-Agarose: sc-2003 (0.5 ml agarose/2.0 ml).

DATA



MRP-S25 (LB-L4): sc-134393. Western blot analysis of MRP-S25 expression in NIH/3T3 whole cell lysate.

RESEARCH USE

For research use only, not for use in diagnostic procedures.

PROTOCOLS

See our web site at www.scbt.com for detailed protocols and support products.