

Nup43 (6L4): sc-134406

BACKGROUND

The nuclear pore complex (NPC) mediates bidirectional macromolecular traffic between the nucleus and cytoplasm in eukaryotic cells and is comprised of more than 100 different subunits. Many of the subunits belong to a family called nucleoporins (Nups), which are characterized by the presence of O-linked-N-acetylglucosamine moieties and a distinctive pentapeptide repeat (XFXFG). Nup43 (nucleoporin 43 kDa) is a 380 amino acid protein that contains six WD domains and exists as a component of the Nup107-160 subcomplex of the nuclear pore complex (NPC). The Nup107-160 subcomplex is required for the assembly of a functional NPC as well as for normal kinetochore microtubule attachment, mitotic progression and chromosome segregation. Members of the Nup107-160 subcomplex include NUP160, NUP133, NUP107, NUP98, NUP85, NUP37, SEH1 and SEC13.

REFERENCES

- Schlenstedt, G. 1996. Protein import into the nucleus. *FEBS Lett.* 389: 75-79.
- Hu, T., Guan, T. and Gerace, L. 1996. Molecular and functional characterization of the p62 complex, an assembly of nuclear pore complex glycoproteins. *J. Cell Biol.* 134: 589-601.
- Moroianu, J. 1997. Molecular mechanisms of nuclear protein transport. *Crit. Rev. Eukaryot. Gene Expr.* 7: 61-72.
- Bodoor, K., Shaikh, S., Enarson, P., Chowdhury, S., Salina, D., Raharjo, W.H. and Burke, B. 1999. Function and assembly of nuclear pore complex proteins. *Biochem. Cell Biol.* 77: 321-329.
- Moroianu, J. 1999. Nuclear import and export pathways. *J. Cell. Biochem. Suppl.* 32-33: 76-83.
- Loiodice, I., Alves, A., Rabut, G., Van Overbeek, M., Ellenberg, J., Sibarita, J.B. and Doye, V. 2004. The entire Nup107-160 complex, including three new members, is targeted as one entity to kinetochores in mitosis. *Mol. Biol. Cell* 15: 3333-3344.
- Chakraborty, P., Wang, Y., Wei, J.H., van Deursen, J., Yu, H., Malureanu, L., Dasso, M., Forbes, D.J., Levy, D.E., Seemann, J. and Fontoura, B.M. 2008. Nucleoporin levels regulate cell cycle progression and phase-specific gene expression. *Dev. Cell* 15: 657-667.
- Platani, M., Santarella-Mellwig, R., Posch, M., Walczak, R., Swedlow, J.R. and Mattaj, I.W. 2009. The Nup107-160 nucleoporin complex promotes mitotic events via control of the localization state of the chromosome passenger complex. *Mol. Biol. Cell* 20: 5260-5275.

CHROMOSOMAL LOCATION

Genetic locus: NUP43 (human) mapping to 6q25.1.

SOURCE

Nup43 (6L4) is a mouse monoclonal antibody raised against recombinant Nup43 protein of human origin.

PRODUCT

Each vial contains 100 µg IgG_{2a} kappa light chain in 1.0 ml of PBS with < 0.1% sodium azide and 0.1% gelatin.

APPLICATIONS

Nup43 (6L4) is recommended for detection of Nup43 of human origin by Western Blotting (starting dilution 1:200, dilution range 1:100-1:1000), immunoprecipitation [1-2 µg per 100-500 µg of total protein (1 ml of cell lysate)] and solid phase ELISA (starting dilution 1:30, dilution range 1:30-1:3000).

Suitable for use as control antibody for Nup43 siRNA (h): sc-95534, Nup43 shRNA Plasmid (h): sc-95534-SH and Nup43 shRNA (h) Lentiviral Particles: sc-95534-V.

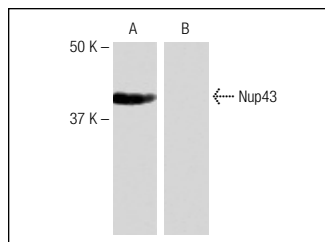
Molecular Weight of Nup43: 43 kDa.

Positive Controls: human Nup43 transfected 293T whole cell lysate.

RECOMMENDED SUPPORT REAGENTS

To ensure optimal results, the following support reagents are recommended: 1) Western Blotting: use m-IgGκ BP-HRP: sc-516102 or m-IgGκ BP-HRP (Cruz Marker): sc-516102-CM (dilution range: 1:1000-1:10000), Cruz Marker™ Molecular Weight Standards: sc-2035, TBS Blotto A Blocking Reagent: sc-2333 and Western Blotting Luminol Reagent: sc-2048. 2) Immunoprecipitation: use Protein A/G PLUS-Agarose: sc-2003 (0.5 ml agarose/2.0 ml).

DATA



Nup43 (6L4): sc-134406. Western blot analysis of Nup43 expression in human Nup43 transfected (A) and non-transfected (B) 293T whole cell lysates.

STORAGE

Store at 4° C, ****DO NOT FREEZE****. Stable for one year from the date of shipment. Non-hazardous. No MSDS required.

RESEARCH USE

For research use only, not for use in diagnostic procedures.

PROTOCOLS

See our web site at www.scbt.com for detailed protocols and support products.