

## NXF2 (NB-B46): sc-134407

### BACKGROUND

Nuclear export factor (NXF) proteins belong to an evolutionarily conserved family of proteins which are characterized by a leucine-rich-repeat domain (LRR) followed by a region known as the nuclear transport factor 2 (NTF2)-like domain. The NXF family includes TAP1 (NXF1) and NXF2-5. TAP1 mediates the export of constitutive transport element (CTE)-containing simian type D retroviral RNAs through direct binding to the CTE. NXF2 binds RNA and localizes to the nuclear envelope, where it exhibits RNA export activity. NXF3 does not bind RNA nor localize to the nuclear rim, and NXF3 does not exhibit RNA export activity. NXF5 binds RNA and localizes in the form of granules in the cell body and neurites of mature hippocampal neurons. TAP1, NXF2 and NXF5 form heterodimers with RNA nuclear export-associated protein p15 (NXT).

### REFERENCES

- Herold, A., Suyama, M., Rodrigues, J.P., Braun, I.C., Kutay, U., Carmo-Fonseca, M., Bork, P. and Izaurralde, E. 2000. TAP (NXF1) belongs to a multigene family of putative RNA export factors with a conserved modular architecture. *Mol. Cell. Biol.* 20: 8996-9008.
- Tan, W., Zolotukhin, A.S., Bear, J., Patenaude, D.J. and Felber, B.K. 2000. The mRNA export in *Caenorhabditis elegans* is mediated by Ce-NXF-1, an ortholog of human TAP/NXF and *Saccharomyces cerevisiae* Mex67p. *RNA* 6: 1762-1772.
- Braun, I.C., Herold, A., Rode, M., Conti, E. and Izaurralde, E. 2001. Overexpression of TAP/p15 heterodimers bypasses nuclear retention and stimulates nuclear mRNA export. *J. Biol. Chem.* 276: 20536-20543.
- Nappi, F., Schneider, R., Zolotukhin, A., Smulevitch, S., Michalowski, D., Bear, J., Felber, B.K. and Pavlakis, G.N. 2001. Identification of a novel posttranscriptional regulatory element by using a Rev- and RRE-mutated human immunodeficiency virus type 1 DNA proviral clone as a molecular trap. *J. Virol.* 75: 4558-4569.
- Jun, L., Frints, S., Duhamel, H., Herold, A., Abad-Rodriguez, J., Dotti, C., Izaurralde, E., Marynen, P. and Froyen, G. 2001. NXF5, a novel member of the nuclear RNA export factor family, is lost in a male patient with a syndromic form of mental retardation. *Curr. Biol.* 11: 1381-1391.

### CHROMOSOMAL LOCATION

Genetic locus: NXF2 (human) mapping to Xq22.1.

### SOURCE

NXF2 (NB-B46) is a mouse monoclonal antibody raised against recombinant NXF2 protein of human origin.

### PRODUCT

Each vial contains 100 µg IgG<sub>2a</sub> kappa light chain in 1.0 ml of PBS with < 0.1% sodium azide and 0.1% gelatin.

### STORAGE

Store at 4° C, **\*\*DO NOT FREEZE\*\***. Stable for one year from the date of shipment. Non-hazardous. No MSDS required.

### APPLICATIONS

NXF2 (NB-B46) is recommended for detection of NXF2 of human origin by Western Blotting (starting dilution 1:200, dilution range 1:100-1:1000), immunoprecipitation [1-2 µg per 100-500 µg of total protein (1 ml of cell lysate)] and solid phase ELISA (starting dilution 1:30, dilution range 1:30-1:3000).

Suitable for use as control antibody for NXF2 siRNA (h): sc-38135, NXF2 shRNA Plasmid (h): sc-38135-SH and NXF2 shRNA (h) Lentiviral Particles: sc-38135-V.

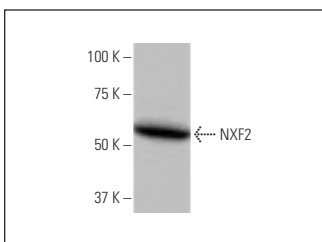
Molecular Weight of NXF2: 72 kDa.

Positive Controls: HeLa whole cell lysate: sc-2200.

### RECOMMENDED SUPPORT REAGENTS

To ensure optimal results, the following support reagents are recommended: 1) Western Blotting: use m-IgGκ BP-HRP: sc-516102 or m-IgGκ BP-HRP (Cruz Marker): sc-516102-CM (dilution range: 1:1000-1:10000), Cruz Marker™ Molecular Weight Standards: sc-2035, UltraCruz® Blocking Reagent: sc-516214 and Western Blotting Luminol Reagent: sc-2048. 2) Immunoprecipitation: use Protein A/G PLUS-Agarose: sc-2003 (0.5 ml agarose/2.0 ml).

### DATA



NXF2 (NB-B46): sc-134407. Western blot analysis of NXF2 expression in HeLa whole cell lysate.

### RESEARCH USE

For research use only, not for use in diagnostic procedures.

### PROTOCOLS

See our web site at [www.scbt.com](http://www.scbt.com) for detailed protocols and support products.