

PCDH10 (2-YD37): sc-134415

BACKGROUND

Protocadherins are a large family of cadherin-like cell adhesion proteins that are involved in the establishment and maintenance of neuronal connections in the brain. There are three protocadherin gene clusters, designated α , β and γ , all of which contain multiple tandemly arranged genes. PCDH10 (protocadherin 10), also known as PCDH19 or OL-PCDH, is a 1,040 amino acid single-pass type I membrane protein that contains six cadherin domains and one transmembrane domain. Expressed at moderate levels in brain, ovary and testis and present at lower levels in all other tissues, PCDH10 functions as a calcium-dependent cell-adhesion protein that may function as a tumor suppressor. When underexpressed, PCDH10 is associated with the progression of various carcinomas, including gastric cancer.

REFERENCES

1. Wu, Q., et al. 1999. A striking organization of a large family of human neural cadherin-like cell adhesion genes. *Cell* 97: 779-790.
2. Yagi, T., et al. 2000. Cadherin superfamily genes: functions, genomic organization, and neurologic diversity. *Genes Dev.* 14: 1169-1180.
3. Nollet, F., et al. 2000. Phylogenetic analysis of the cadherin superfamily allows identification of six major subfamilies besides several solitary members. *J. Mol. Biol.* 299: 551-572.
4. Wu, Q., et al. 2001. Comparative DNA sequence analysis of mouse and human protocadherin gene clusters. *Genome Res.* 11: 389-404.
5. Wolverson, T., et al. 2001. Identification and characterization of three members of a novel subclass of protocadherins. *Genomics* 76: 66-72.
6. Ying, J., et al. 2006. Functional epigenetics identifies a protocadherin PCDH10 as a candidate tumor suppressor for nasopharyngeal, esophageal and multiple other carcinomas with frequent methylation. *Oncogene* 25: 1070-1080.
7. Nakao, S., et al. 2008. Contact-dependent promotion of cell migration by the OL-protocadherin-NAP1 interaction. *J. Cell Biol.* 182: 395-410.
8. Online Mendelian Inheritance in Man, OMIM[™]. 2008. Johns Hopkins University, Baltimore, MD. MIM Number: 608286. World Wide Web URL: <http://www.ncbi.nlm.nih.gov/omim/>
9. Yu, J., et al. 2009. Methylation of protocadherin 10, a novel tumor suppressor, is associated with poor prognosis in patients with gastric cancer. *Gastroenterology* 136: 640-651.

CHROMOSOMAL LOCATION

Genetic locus: PCDH10 (human) mapping to 4q28.3; Pcdh10 (mouse) mapping to 3 B.

SOURCE

PCDH10 (2-YD37) is a mouse monoclonal antibody raised against recombinant PCDH10 protein of human origin.

RESEARCH USE

For research use only, not for use in diagnostic procedures.

PRODUCT

Each vial contains 100 μ g IgG_{2b} kappa light chain in 1.0 ml of PBS with < 0.1% sodium azide and 0.1% gelatin.

APPLICATIONS

PCDH10 (2-YD37) is recommended for detection of PCDH10 of mouse, rat and human origin by Western Blotting (starting dilution 1:200, dilution range 1:100-1:1000), immunoprecipitation [1-2 μ g per 100-500 μ g of total protein (1 ml of cell lysate)] and solid phase ELISA (starting dilution 1:30, dilution range 1:30-1:3000).

Suitable for use as control antibody for PCDH10 siRNA (h): sc-88975, Pcdh10 siRNA (m): sc-152055, PCDH10 shRNA Plasmid (h): sc-88975-SH, Pcdh10 shRNA Plasmid (m): sc-152055-SH, PCDH10 shRNA (h) Lentiviral Particles: sc-88975-V and Pcdh10 shRNA (m) Lentiviral Particles: sc-152055-V.

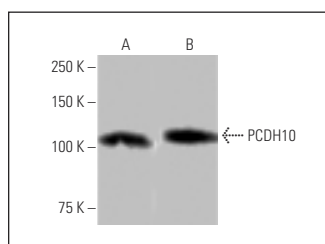
Molecular Weight of PCDH10: 113 kDa.

Positive Controls: human MPP3 transfected 293T whole cell lysate.

RECOMMENDED SUPPORT REAGENTS

To ensure optimal results, the following support reagents are recommended: 1) Western Blotting: use m-IgG κ BP-HRP: sc-516102 or m-IgG κ BP-HRP (Cruz Marker): sc-516102-CM (dilution range: 1:1000-1:10000), Cruz Marker[™] Molecular Weight Standards: sc-2035, UltraCruz[®] Blocking Reagent: sc-516214 and Western Blotting Luminol Reagent: sc-2048. 2) Immunoprecipitation: use Protein A/G PLUS-Agarose: sc-2003 (0.5 ml agarose/2.0 ml).

DATA



PCDH10 (2-YD37): sc-134415. Western blot analysis of PCDH10 expression in human PCDH10 transfected (A) and non-transfected (B) 293T whole cell lysates.

STORAGE

Store at 4° C, ****DO NOT FREEZE****. Stable for one year from the date of shipment. Non-hazardous. No MSDS required.

PROTOCOLS

See our web site at www.scbt.com for detailed protocols and support products.