

IL-32 (H-150): sc-134446

BACKGROUND

The interleukins make up a large family of well characterized cytokines, primarily of hematopoietic cell origin. The interleukins are secreted by immune cells (mainly macrophages, B cells and T cells) that regulate a wide range of immune system functions. Interleukin-32 (IL-32), also designated Natural Killer (NK) cell transcript 4 (nk4), may play a role in inflammatory responses such as lymphocyte activation. IL-32 is secreted following stimulation with inflammatory cytokines such as IL-1 β and IFN- γ , and by NK cells after exposure to IL-12 and IL-18. It also induces production of IL-1 β , TNF α , MIP-2 and IL-6. Expression of IL-32 increases after activation of T cells by mitogens or activation of NK cells by IL-2. The IL-32 protein contains three potential N-myristoylation sites, a tyrosine sulfation site, an RGD cell-attachment sequence and multiple putative phosphorylation sites. Human IL-32 exists as four isoforms.

REFERENCES

- Dahl, C.A., Schall, R.P., He, H.L. and Cairns, J.S. 1992. Identification of a novel gene expressed in activated natural killer cells and T cells. *J. Immunol.* 148: 597-603.
- Kim, S.H., Han, S.Y., Azam, T., Yoon, D.Y. and Dinarello, C.A. 2005. Interleukin-32: a cytokine and inducer of TNF α . *Immunity* 22: 131-142.
- Netea, M.G., Azam, T., Ferwerda, G., Girardin, S.E., Walsh, M., Park, J.S., Abraham, E., Kim, J.M., Yoon, D.Y., Dinarello, C.A. and Kim, S.H. 2005. IL-32 synergizes with nucleotide oligomerization domain (NOD) 1 and NOD2 ligands for IL-1 β and IL-6 production through a caspase-1-dependent mechanism. *Proc. Natl. Acad. Sci. USA* 102: 16309-11634.
- Joosten, L.A., Netea, M.G., Kim, S.H., Yoon, D.Y., Oppers-Walgreen, B., Radstake, T.R., Barrera, P., van de Loo, F.A., Dinarello, C.A. and van den Berg, W.B. 2006. IL-32, a proinflammatory cytokine in rheumatoid arthritis. *Proc. Natl. Acad. Sci. USA* 103: 3298-3303.
- Novick, D., Rubinstein, M., Azam, T., Rabinkov, A., Dinarello, C.A. and Kim, S.H. 2006. Proteinase 3 is an IL-32 binding protein. *Proc. Natl. Acad. Sci. USA* 103: 3316-3321.

CHROMOSOMAL LOCATION

Genetic locus: IL32 (human) mapping to 16p13.3.

SOURCE

IL-32 (H-150) is a rabbit polyclonal antibody raised against amino acids 85-234 mapping at the C-terminus of IL-32 of human origin.

PRODUCT

Each vial contains 200 μ g IgG in 1.0 ml of PBS with < 0.1% sodium azide and 0.1% gelatin.

STORAGE

Store at 4° C, **DO NOT FREEZE**. Stable for one year from the date of shipment. Non-hazardous. No MSDS required.

APPLICATIONS

IL-32 (H-150) is recommended for detection of precursor and mature Interleukin-32 of human origin by Western Blotting (starting dilution 1:200, dilution range 1:100-1:1000), immunoprecipitation [1-2 μ g per 100-500 μ g of total protein (1 ml of cell lysate)], immunofluorescence (starting dilution 1:50, dilution range 1:50-1:500) and solid phase ELISA (starting dilution 1:30, dilution range 1:30-1:3000).

Suitable for use as control antibody for IL-32 siRNA (h): sc-60841, IL-32 shRNA Plasmid (h): sc-60841-SH and IL-32 shRNA (h) Lentiviral Particles: sc-60841-V.

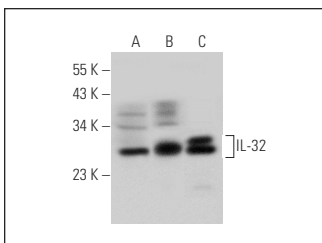
Molecular Weight of IL-32: 25 kDa.

Positive Controls: human stomach extract: sc-363780, human breast extract: sc-363753 or A549 cell lysate: sc-2413.

RECOMMENDED SECONDARY REAGENTS

To ensure optimal results, the following support (secondary) reagents are recommended: 1) Western Blotting: use goat anti-rabbit IgG-HRP: sc-2004 (dilution range: 1:2000-1:100,000) or Cruz Marker™ compatible goat anti-rabbit IgG-HRP: sc-2030 (dilution range: 1:2000-1:5000), Cruz Marker™ Molecular Weight Standards: sc-2035, TBS Blotto A Blocking Reagent: sc-2333 and Western Blotting Luminol Reagent: sc-2048. 2) Immunoprecipitation: use Protein A/G PLUS-Agarose: sc-2003 (0.5 ml agarose/2.0 ml). 3) Immunofluorescence: use goat anti-rabbit IgG-FITC: sc-2012 (dilution range: 1:100-1:400) or goat anti-rabbit IgG-TR: sc-2780 (dilution range: 1:100-1:400) with UltraCruz™ Mounting Medium: sc-24941.

DATA



IL-32 (H-150): sc-134446. Western blot analysis of IL-32 expression in human stomach (A) and human breast (B) tissue extracts and A549 whole cell lysate (C).

RESEARCH USE

For research use only, not for use in diagnostic procedures.

PROTOCOLS

See our web site at www.scbt.com or our catalog for detailed protocols and support products.