

KIFC2 (H-200): sc-134594

BACKGROUND

The kinesin superfamily proteins (KIFs) are microtubule-dependent molecular motors that transport membranous organelles and protein complexes in a microtubule- and ATP-dependent manner. Cells use KIFs to tightly control the direction, destination, and speed of transportation of a variety of important functional molecules, including mRNA. KIFC2 is 792 amino acid member of the C-terminal motor family specifically expressed in both the central and peripheral nervous systems in nonproliferative cells. KIFC2 accumulates at the proximal and distal sides of axons and is a minus-end-directed kinesin. KIFC2 localizes with some, but not all, axonally transported organelles. KIFC2 may be involved in retrograde axonal transport.

REFERENCES

- Drescher, J. and Desselberger, U. 1976. Kinetics of reactions of antihemagglutinin and antineuraminidase antibodies with H2N2 and H3N2 influenza virus strains and description of a modification of the photometric ACU method for titration of antineuraminidase antibodies. *Arch. Virol.* 50: 97-107.
- Hanlon, D.W., Yang, Z. and Goldstein, L.S. 1997. Characterization of KIFC2, a neuronal kinesin superfamily member in mouse. *Neuron* 18: 439-451.
- Nakagawa, T., Tanaka, Y., Matsuo, E., Kondo, S., Okada, Y., Noda, Y., Kanai, Y. and Hirokawa, N. 1997. Identif in mouse genome. *Proc. Natl. Acad. Sci. USA* 94: 9654-9659.
- Hirokawa, N., Noda, Y. and Okada, Y. 1998. Kinesin and dynein superfamily proteins in organelle transport and cell division. *Curr. Opin. Cell Biol.* 10: 60-73.
- Hamlin, P.J., Jones, P.F., Leek, J.P., Bransfield, K., Lench, N.J., Aldersley, M.A., Howdle, P.D., Markham, A.F. and Robinson, P.A. 1999. Assignment of GALGT encoding β -1, 4N-acetylgalactosaminyl-transferase (GalNAc-T) and KIF5A encoding neuronal kinesin (D12S1889) to human chromosome band 12q13 by assignment to ICI YAC 26EG10 and *in situ* hybridization. *Cytogenet. Cell Genet.* 82: 267-268.
- Miki, H., Setou, M., Kaneshiro, K. and Hirokawa, N. 2001. All kinesin superfamily protein, KIF, genes in mouse and human. *Proc. Natl. Acad. Sci. USA* 98: 7004-7011.
- Yang, Z., Roberts, E.A. and Goldstein, L.S. 2001. Functional analysis of mouse C-terminal kinesin motor KIFC2. *Mol. Cell. Biol.* 21: 2463-2466.
- Banani, E., Murray, J.W., Stockert, R.J., Satir, P. and Wolkoff, A.W. 2003. Regulation of early endocytic vesicle system. *J. Cell Sci.* 116: 2749-2761.
- Banani, E., Nath, S., Gordon, K., Satir, P., Stockert, R.J., Murray, J.W. and Wolkoff, A.W. 2004. Microtubule-dependent movement of late endocytic vesicles *in vitro*: requirements for Dynein and Kinesin. *Mol. Biol. Cell* 15: 3688-3697.

CHROMOSOMAL LOCATION

Genetic locus: KIFC2 (human) mapping to 8q24.3; Kifc2 (mouse) mapping to 15 D3.

RESEARCH USE

For research use only, not for use in diagnostic procedures.

SOURCE

KIFC2 (H-200) is a rabbit polyclonal antibody raised against amino acids 181-380 mapping within an internal region of KIFC2 of human origin.

PRODUCT

Each vial contains 200 μ g IgG in 1.0 ml of PBS with < 0.1% sodium azide and 0.1% gelatin.

APPLICATIONS

KIFC2 (H-200) is recommended for detection of KIFC2 of mouse, rat and human origin by Western Blotting (starting dilution 1:200, dilution range 1:100-1:1000), immunoprecipitation [1-2 μ g per 100-500 μ g of total protein (1 ml of cell lysate)], immunofluorescence (starting dilution 1:50, dilution range 1:50-1:500) and solid phase ELISA (starting dilution 1:30, dilution range 1:30-1:3000).

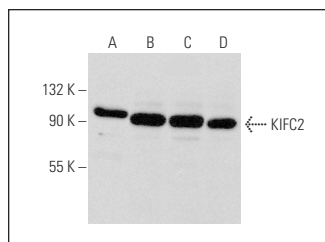
KIFC2 (H-200) is also recommended for detection of KIFC2 in additional species, including bovine.

Suitable for use as control antibody for KIFC2 siRNA (h): sc-60890, KIFC2 siRNA (m): sc-60891, KIFC2 shRNA Plasmid (h): sc-60890-SH, KIFC2 shRNA Plasmid (m): sc-60891-SH, KIFC2 shRNA (h) Lentiviral Particles: sc-60890-V and KIFC2 shRNA (m) Lentiviral Particles: sc-60891-V.

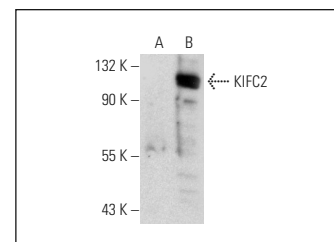
Molecular Weight of KIFC2: 90 kDa.

Positive Controls: KIFC2 (m): 293 Lysate: sc-178846, HeLa whole cell lysate: sc-2200 or Jurkat whole cell lysate: sc-2204.

DATA



KIFC2 (H-200): sc-134594. Western blot analysis of KIFC2 expression in HeLa (A), Jurkat (B), K-562 (C) and THP-1 (D) whole cell lysates.



KIFC2 (H-200): sc-134594. Western blot analysis of KIFC2 expression in non-transfected: sc-110760 (A) and mouse KIFC2 transfected: sc-178846 (B) 293 whole cell lysates.

STORAGE

Store at 4° C, ****DO NOT FREEZE****. Stable for one year from the date of shipment. Non-hazardous. No MSDS required.

PROTOCOLS

See our web site at www.scbt.com or our catalog for detailed protocols and support products.