

# CKAP5 (H-300): sc-134617

## BACKGROUND

CKAP5 (cytoskeleton-associated protein 5), also known as ch-TOG (colonic hepatic tumor overexpressed gene), is a 2,032 amino acid protein that is a member of the TOG/XMAP215 family and contains nine heat repeats. CKAP5 is expressed in skeletal muscle, brain, heart, placenta, lung, liver, kidney and pancreas, and is overexpressed in hepatomas and colonic tumors. During interphase, CKAP5 localizes to the perinuclear cytoplasm and the spindle poles, where it plays an important role in spindle microtubule organization. Specifically, CKAP5 is required for extrapole formation in prometaphases lacking ARK-1, a mitotic centrosomal kinase that functions as a spindle regulator and is overexpressed in tumors. CKAP5 binds to hnRNP A2 (heterogeneous nuclear ribonucleoprotein) and interacts with TACC1, TACC3 and Tubulin.

## REFERENCES

1. Charrasse, S., et al. 1995. Characterization of the cDNA and pattern of expression of a new gene overexpressed in human hepatomas and colonic tumors. *Eur. J. Biochem.* 234: 406-413.
2. Charrasse, S., et al. 1996. Expression of the tumor over-expressed ch-TOG gene in human and baboon brain. *Neurosci. Lett.* 212: 119-122.

## CHROMOSOMAL LOCATION

Genetic locus: CKAP5 (human) mapping to 11p11.2; Ckap5 (mouse) mapping to 2 E1.

## SOURCE

CKAP5 (H-300) is a rabbit polyclonal antibody raised against amino acids 1-300 mapping at the N-terminus of CKAP5 of human origin.

## PRODUCT

Each vial contains 200 µg IgG in 1.0 ml of PBS with < 0.1% sodium azide and 0.1% gelatin.

## APPLICATIONS

CKAP5 (H-300) is recommended for detection of CKAP5 of mouse, rat and human origin by Western Blotting (starting dilution 1:200, dilution range 1:100-1:1000), immunoprecipitation [1-2 µg per 100-500 µg of total protein (1 ml of cell lysate)], immunofluorescence (starting dilution 1:50, dilution range 1:50-1:500) and solid phase ELISA (starting dilution 1:30, dilution range 1:30-1:3000).

CKAP5 (H-300) is also recommended for detection of CKAP5 in additional species, including equine, canine, bovine, porcine and avian.

Suitable for use as control antibody for CKAP5 siRNA (h): sc-96689, CKAP5 siRNA (m): sc-142355, CKAP5 shRNA Plasmid (h): sc-96689-SH, CKAP5 shRNA Plasmid (m): sc-142355-SH, CKAP5 shRNA (h) Lentiviral Particles: sc-96689-V and CKAP5 shRNA (m) Lentiviral Particles: sc-142355-V.

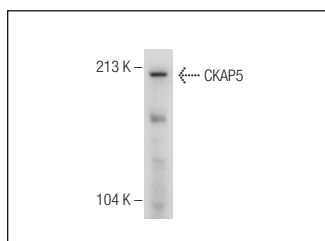
Molecular Weight of CKAP5: 225 kDa.

Positive Controls: MDA-MB-468 cell lysate: sc-2282.

## RECOMMENDED SECONDARY REAGENTS

To ensure optimal results, the following support (secondary) reagents are recommended: 1) Western Blotting: use goat anti-rabbit IgG-HRP: sc-2004 (dilution range: 1:2000-1:100,000) or Cruz Marker™ compatible goat anti-rabbit IgG-HRP: sc-2030 (dilution range: 1:2000-1:5000), Cruz Marker™ Molecular Weight Standards: sc-2035, TBS Blotto A Blocking Reagent: sc-2333 and Western Blotting Luminol Reagent: sc-2048. 2) Immunoprecipitation: use Protein A/G PLUS-Agarose: sc-2003 (0.5 ml agarose/2.0 ml). 3) Immunofluorescence: use goat anti-rabbit IgG-FITC: sc-2012 (dilution range: 1:100-1:400) or goat anti-rabbit IgG-TR: sc-2780 (dilution range: 1:100-1:400) with UltraCruz™ Mounting Medium: sc-24941.

## DATA



CKAP5 (H-300): sc-134617. Western blot analysis of CKAP5 expression in MDA-MB-468 whole cell lysate.

## STORAGE

Store at 4° C, \*\*DO NOT FREEZE\*\*. Stable for one year from the date of shipment. Non-hazardous. No MSDS required.

## RESEARCH USE

For research use only, not for use in diagnostic procedures.

## PROTOCOLS

See our web site at [www.scbt.com](http://www.scbt.com) or our catalog for detailed protocols and support products.

**MONOS**  
Satisfaction  
Guaranteed

Try **CKAP5 (H-4): sc-374394**, our highly recommended monoclonal alternative to CKAP5 (H-300).