

Abin-1 (H-300): sc-134660

BACKGROUND

Abin-1, also known as TNIP1 (TNFAIP3 interacting protein 1), VAN or NAF1 (nef-associated factor 1), is a 636 amino acid protein that localizes to both the nucleus and the cytoplasm and is shuttled between the two intercellular regions in a CRM1-dependent manner. Expressed ubiquitously with highest expression in spleen and skeletal muscle, Abin-1 interacts with A20 and, via this interaction, interferes with TRAF2-mediated transactivation signals and effectively inhibits TNF-induced NF κ B expression. Additionally, Abin-1 can be incorporated into HIV-1 virions and, if overexpressed, can inhibit viral replication. Abin-1 may also play an important role in the regulation of nuclear import and export activities. Multiple isoforms of Abin-1 exist due to alternative splicing events.

CHROMOSOMAL LOCATION

Genetic locus: TNIP1 (human) mapping to 5q33.1; Tnip1 (mouse) mapping to 11 B1.3.

SOURCE

Abin-1 (H-300) is a rabbit polyclonal antibody raised against amino acids 1-300 mapping at the N-terminus of Abin-1 of human origin.

PRODUCT

Each vial contains 200 μ g IgG in 1.0 ml of PBS with < 0.1% sodium azide and 0.1% gelatin. Also available as TransCruz reagent for Gel Supershift and ChIP applications, sc-134660 X, 200 μ g/0.1 ml.

STORAGE

Store at 4° C, ****DO NOT FREEZE****. Stable for one year from the date of shipment. Non-hazardous. No MSDS required.

APPLICATIONS

Abin-1 (H-300) is recommended for detection of Abin-1 of mouse, rat and human origin by Western Blotting (starting dilution 1:200, dilution range 1:100-1:1000), immunoprecipitation [1-2 μ g per 100-500 μ g of total protein (1 ml of cell lysate)], immunofluorescence (starting dilution 1:50, dilution range 1:50-1:500) and solid phase ELISA (starting dilution 1:30, dilution range 1:30-1:3000).

Abin-1 (H-300) is also recommended for detection of Abin-1 in additional species, including equine.

Suitable for use as control antibody for Abin-1 siRNA (h): sc-92019, Abin-1 siRNA (m): sc-140779, Abin-1 shRNA Plasmid (h): sc-92019-SH, Abin-1 shRNA Plasmid (m): sc-140779-SH, Abin-1 shRNA (h) Lentiviral Particles: sc-92019-V and Abin-1 shRNA (m) Lentiviral Particles: sc-140779-V.

Abin-1 (H-300) X TransCruz antibody is recommended for Gel Supershift and ChIP applications.

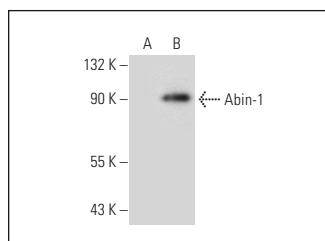
Molecular Weight of Abin-1: 72 kDa.

Positive Controls: Abin-1 (h2): 293T Lysate: sc-176761.

RECOMMENDED SECONDARY REAGENTS

To ensure optimal results, the following support (secondary) reagents are recommended: 1) Western Blotting: use goat anti-rabbit IgG-HRP: sc-2004 (dilution range: 1:2000-1:100,000) or Cruz Marker™ compatible goat anti-rabbit IgG-HRP: sc-2030 (dilution range: 1:2000-1:5000), Cruz Marker™ Molecular Weight Standards: sc-2035, TBS Blotto A Blocking Reagent: sc-2333 and Western Blotting Luminol Reagent: sc-2048. 2) Immunoprecipitation: use Protein A/G PLUS-Agarose: sc-2003 (0.5 ml agarose/2.0 ml). 3) Immunofluorescence: use goat anti-rabbit IgG-FITC: sc-2012 (dilution range: 1:100-1:400) or goat anti-rabbit IgG-TR: sc-2780 (dilution range: 1:100-1:400) with UltraCruz™ Mounting Medium: sc-24941.

DATA



Abin-1 (H-300): sc-134660. Western blot analysis of Abin-1 expression in non-transfected: sc-117752 (A) and human Abin-1 transfected: sc-176761 (B) 293T whole cell lysates.

RESEARCH USE

For research use only, not for use in diagnostic procedures.

PROTOCOLS

See our web site at www.scbt.com or our catalog for detailed protocols and support products.


 MONOS
Satisfaction
Guaranteed

Try **Abin-1 (G-12): sc-376999**, our highly recommended monoclonal alternative to Abin-1 (H-300).