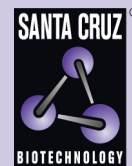


LIP1 (H-300): sc-134669



The Power to Question

BACKGROUND

Members of the protein kinase C (PKC) family play a key regulatory role in a variety of cellular functions including cell growth and differentiation, gene expression, hormone secretion and membrane function. PKCs were originally identified as serine/threonine protein kinases whose activity was dependent on calcium and phospholipids. LIP1 (LKB1-interacting protein 1), also known as STK11IP (serine/threonine kinase 11 interacting protein), LKB1IP or STK11IP1, is a 1,099 amino acid cytoplasmic protein containing 6 LRR (leucine-rich) repeats. LIP1 forms a ternary complex that is composed of LKB1 and TGF- β -regulated transcription factor Smad4. LIP1 may participate in regulating LKB1 function by controlling its subcellular localization. LIP1 is encoded by a gene located on human chromosome 2, which houses over 1,400 genes and comprises nearly 8% of the human genome.

REFERENCES

1. Takai, Y., et al. 1979. Calcium-dependent activation of a multifunctional protein kinase by membrane phospholipids. *J. Biol. Chem.* 254: 3692-3695.
2. Nishizuka, Y. 1984. The role of protein kinase C in cell surface signal transduction and tumour promotion. *Nature* 308: 693-698.
3. Ohno, S., et al. 1991. Structural and functional diversities of a family of signal transducing protein kinases, protein kinase C family; two distinct classes of PKC, conventional cPKC and novel nPKC. *Adv. Enzyme Regul.* 31: 287-303.
4. Nagase, T., et al. 2001. Prediction of the coding sequences of unidentified human genes. XXI. The complete sequences of 60 new cDNA clones from brain which code for large proteins. *DNA Res.* 8: 179-187.
5. Smith, D.P., et al. 2001. LIP1, a cytoplasmic protein functionally linked to the Peutz-Jeghers syndrome kinase LKB1. *Hum. Mol. Genet.* 10: 2869-2877.
6. Buchet-Poyau, K., et al. 2002. Search for the second Peutz-Jeghers syndrome locus: exclusion of the STK13, PRKCG, KLK10, and PSCD2 genes on chromosome 19 and the STK11IP gene on chromosome 2. *Cytogenet. Genome Res.* 97: 171-178.
7. Online Mendelian Inheritance in Man, OMIM™. 2003. Johns Hopkins University, Baltimore, MD. MIM Number: 607172. World Wide Web URL: <http://www.ncbi.nlm.nih.gov/omim/>

CHROMOSOMAL LOCATION

Genetic locus: STK11IP (human) mapping to 2q35; Stk11ip (mouse) mapping to 1 C4.

SOURCE

LIP1 (H-300) is a rabbit polyclonal antibody raised against amino acids 1-300 mapping at the N-terminus of LIP1 of human origin.

STORAGE

Store at 4° C, ****DO NOT FREEZE****. Stable for one year from the date of shipment. Non-hazardous. No MSDS required.

PRODUCT

Each vial contains 200 μ g IgG in 1.0 ml of PBS with < 0.1% sodium azide and 0.1% gelatin.

APPLICATIONS

LIP1 (H-300) is recommended for detection of LIP1 of mouse, rat and human origin by Western Blotting (starting dilution 1:200, dilution range 1:100-1:1000), immunoprecipitation [1-2 μ g per 100-500 μ g of total protein (1 ml of cell lysate)], immunofluorescence (starting dilution 1:50, dilution range 1:50-1:500) and solid phase ELISA (starting dilution 1:30, dilution range 1:30-1:3000).

Suitable for use as control antibody for LIP1 siRNA (h): sc-94263, LIP1 siRNA (m): sc-146738, LIP1 shRNA Plasmid (h): sc-94263-SH, LIP1 shRNA Plasmid (m): sc-146738-SH, LIP1 shRNA (h) Lentiviral Particles: sc-94263-V and LIP1 shRNA (m) Lentiviral Particles: sc-146738-V.

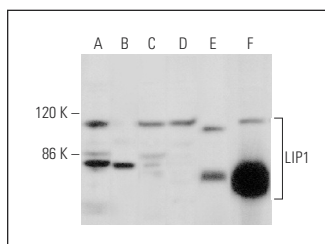
Molecular Weight of LIP1: 121 kDa.

Positive Controls: Jurkat whole cell lysate: sc-2204, NIH/3T3 whole cell lysate: sc-2210 or K-562 whole cell lysate: sc-2203.

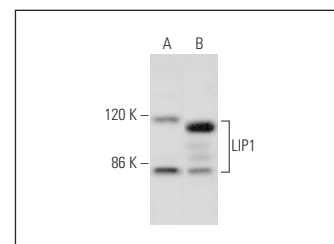
RECOMMENDED SECONDARY REAGENTS

To ensure optimal results, the following support (secondary) reagents are recommended: 1) Western Blotting: use goat anti-rabbit IgG-HRP: sc-2004 (dilution range: 1:2000-1:100,000) or Cruz Marker™ compatible goat anti-rabbit IgG-HRP: sc-2030 (dilution range: 1:2000-1:5000), Cruz Marker™ Molecular Weight Standards: sc-2035, TBS Blotto A Blocking Reagent: sc-2333 and Western Blotting Luminol Reagent: sc-2048. 2) Immunoprecipitation: use Protein A/G PLUS-Agarose: sc-2003 (0.5 ml agarose/2.0 ml). 3) Immunofluorescence: use goat anti-rabbit IgG-FITC: sc-2012 (dilution range: 1:100-1:400) or goat anti-rabbit IgG-TR: sc-2780 (dilution range: 1:100-1:400) with UltraCruz™ Mounting Medium: sc-24941.

DATA



LIP1 (H-300): sc-134669. Western blot analysis of LIP1 expression in K-562 (A), ES-2 (B), HeLa (C) and NTERA-2 cl.D1 (D) whole cell lysates and mouse testis (E) and human ovary (F) tissue extracts.



LIP1 (H-300): sc-134669. Western blot analysis of LIP1 expression in Jurkat (A) and NIH/3T3 (B) whole cell lysates.

RESEARCH USE

For research use only, not for use in diagnostic procedures.

PROTOCOLS

See our web site at www.scbt.com or our catalog for detailed protocols and support products.