

# KLC4 (H-54): sc-134680

## BACKGROUND

The kinesins constitute a large family of microtubule-dependent motor proteins which are responsible for the distribution of numerous organelles, vesicles and macromolecular complexes throughout the cell. Individual kinesin members play crucial roles in cell division, intracellular transport and membrane trafficking events, including endocytosis and transcytosis. KLC4 (kinesin light chain 4), also known as KNSL8, is a 619 amino acid member of the kinesin light chain family. Existing as a component of an oligomeric structure composed of heavy and light chains, KLC4 functions as a microtubule-associated protein that produces mechanical force and is thought to play a role in organelle transport. Multiple isoforms of KLC4 exist due to alternative splicing events.

## REFERENCES

- Lamerdin, J.E., Stilwagen, S.A., Ramirez, M.H., Stubbs, L. and Carrano, A.V. 1996. Sequence analysis of the ERCC2 gene regions in human, mouse, and hamster reveals three linked genes. *Genomics* 34: 399-409.
- Rahman, A., Friedman, D.S. and Goldstein, L.S. 1998. Two kinesin light chain genes in mice. Identification and characterization of the encoded proteins. *J. Biol. Chem.* 273: 15395-15403.
- Rahman, A., Kamal, A., Roberts, E.A. and Goldstein, L.S. 1999. Defective kinesin heavy chain behavior in mouse kinesin light chain mutants. *J. Cell Biol.* 146: 1277-1288.
- Junco, A., Bhullar, B., Tarnasky, H.A. and van der Hoorn, F.A. 2001. Kinesin light-chain KLC3 expression in testis is restricted to spermatids. *Biol. Reprod.* 64: 1320-1330.
- Ichimura, T., Wakamiya-Tsuruta, A., Itagaki, C., Taoka, M., Hayano, T., Natsume, T. and Isoe, T. 2002. Phosphorylation-dependent interaction of kinesin light chain 2 and the 14-3-3 protein. *Biochemistry* 41: 5566-5572.
- Bhullar, B., Zhang, Y., Junco, A., Oko, R. and van der Hoorn, F.A. 2003. Association of kinesin light chain with outer dense fibers in a microtubule-independent fashion. *J. Biol. Chem.* 278: 16159-16168.
- Zhang, Y., Oko, R. and van der Hoorn, F.A. 2004. Rat kinesin light chain 3 associates with spermatid mitochondria. *Dev. Biol.* 275: 23-33.
- DeBoer, S.R., You, Y., Szodorai, A., Kaminska, A., Pigino, G., Nwabuisi, E., Wang, B., Estrada-Hernandez, T., Kins, S., Brady, S.T. and Morfini, G. 2008. Conventional kinesin holoenzymes are composed of heavy and light chain homodimers. *Biochemistry* 47: 4535-4543.
- Daub, H., Olsen, J.V., Bairlein, M., Gnad, F., Oppermann, F.S., Körner, R., Greff, Z., Keri, G., Stemmann, O. and Mann, M. 2008. Kinase-selective enrichment enables quantitative phosphoproteomics of the kinome across the cell cycle. *Mol. Cell* 31: 438-448.

## CHROMOSOMAL LOCATION

Genetic locus: KLC4 (human) mapping to 6p21.1; Klc4 (mouse) mapping to 17 C.

## RESEARCH USE

For research use only, not for use in diagnostic procedures.

## SOURCE

KLC4 (H-54) is a rabbit polyclonal antibody raised against amino acids 487-540 mapping near the C-terminus of KLC4 of human origin.

## PRODUCT

Each vial contains 200 µg IgG in 1.0 ml of PBS with < 0.1% sodium azide and 0.1% gelatin.

## APPLICATIONS

KLC4 (H-54) is recommended for detection of KLC4 of mouse, rat and human origin by Western Blotting (starting dilution 1:200, dilution range 1:100-1:1000), immunoprecipitation [1-2 µg per 100-500 µg of total protein (1 ml of cell lysate)], immunofluorescence (starting dilution 1:50, dilution range 1:50-1:500) and solid phase ELISA (starting dilution 1:30, dilution range 1:30-1:3000).

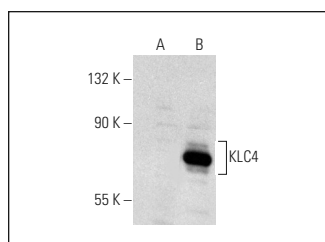
KLC4 (H-54) is also recommended for detection of KLC4 in additional species, including equine, canine, bovine and porcine.

Suitable for use as control antibody for KLC4 siRNA (h): sc-95336, KLC4 siRNA (m): sc-146494, KLC4 shRNA Plasmid (h): sc-95336-SH, KLC4 shRNA Plasmid (m): sc-146494-SH, KLC4 shRNA (h) Lentiviral Particles: sc-95336-V and KLC4 shRNA (m) Lentiviral Particles: sc-146494-V.

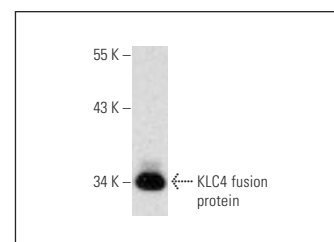
Molecular Weight of KLC4: 69 kDa.

Positive Controls: KLC4 (h4): 293T Lysate: sc-177434.

## DATA



KLC4 (H-54): sc-134680. Western blot analysis of KLC4 expression in non-transfected: sc-117752 (A) and human KLC4 transfected: sc-177434 (B) 293T whole cell lysates.



KLC4 (H-54): sc-134680. Western blot analysis of human recombinant KLC4 fusion protein.

## STORAGE

Store at 4° C, \*\*DO NOT FREEZE\*\*. Stable for one year from the date of shipment. Non-hazardous. No MSDS required.

**MONOS**  
Satisfaction  
Guaranteed

Try **KLC4 (B-8): sc-376702**, our highly recommended monoclonal alternative to KLC4 (H-54).