

# JRAB (M-84): sc-134683

## BACKGROUND

JRAB (junctional Rab 13-binding protein, MICAL-like protein 2) is a 904 amino acid protein with one CH (calponin-homology) domain and one LIM zinc-binding domain. JRAB has been shown to interact with Rab 13 and Rab 8 to facilitate cellular transport of claudin-1, Occludin and E-cadherin. This interaction is vital for the coordination of the assembly of tight junctions (TJs) and adherens junctions (AJs). Dynamic turnover (endocytic recycling) of cell-to-cell AJs and TJs is essential for epithelial morphogenesis during normal development and differentiation. The endocytic recycling of Occludin and claudin proteins is part of an ongoing process of restructuring and maintaining cell junctions, especially at TJs. JRAB and Rab13 have also been implicated in the carcinoma metastasis event of epithelial cell scattering. This event shows Rab 13 and JRAB colocalizing with F-Actin in lamellipodial structures prior to cell scattering.

## REFERENCES

1. Terai, T., Nishimura, N., Kanda, I., Yasui, N. and Sasaki, T. 2006. JRAB/MICAL-L2 is a junctional Rab 13-binding protein mediating the endocytic recycling of Occludin. *Mol. Biol. Cell* 17: 2465-2475.
2. Nishimura, N. and Sasaki, T. 2008. Regulation of epithelial cell adhesion and repulsion: role of endocytic recycling. *J. Med. Invest.* 55: 9-16.
3. Nishimura, N. and Sasaki, T. 2008. Identification and characterization of JRAB/MICAL-L2, a junctional Rab 13-binding protein. *Methods Enzymol.* 438: 141-153.
4. Yamamura, R., Nishimura, N., Nakatsuji, H., Arase, S. and Sasaki, T. 2008. The interaction of JRAB/MICAL-L2 with Rab 8 and Rab 13 coordinates the assembly of tight junctions and adherens junctions. *Mol. Biol. Cell* 19: 971-983.
5. Nakatsuji, H., Nishimura, N., Yamamura, R., Kanayama, H.O. and Sasaki, T. 2008. Involvement of actinin-4 in the recruitment of JRAB/MICAL-L2 to cell-cell junctions and the formation of functional tight junctions. *Mol. Cell Biol.* 28: 3324-3335.
6. Kanda, I., Nishimura, N., Nakatsuji, H., Yamamura, R., Nakanishi, H. and Sasaki, T. 2008. Involvement of Rab 13 and JRAB/MICAL-L2 in epithelial cell scattering. *Oncogene* 27: 1687-1695.
7. Nishimura, N. and Sasaki, T. 2009. Rab family small G proteins in regulation of epithelial apical junctions. *Front. Biosci.* 14: 2115-2129.
8. Sakane, A., Honda, K. and Sasaki, T. 2010. Rab 13 regulates neurite outgrowth in PC-12 cells through its effector protein, JRAB/MICAL-L2. *Mol. Cell Biol.* 30: 1077-1087.

## CHROMOSOMAL LOCATION

Genetic locus: *Micall2* (mouse) mapping to 5 G2.

## SOURCE

JRAB (M-84) is a rabbit polyclonal antibody raised against amino acids 1-84 mapping at the N-terminus of JRAB of mouse origin.

## RESEARCH USE

For research use only, not for use in diagnostic procedures.

## PRODUCT

Each vial contains 200 µg IgG in 1.0 ml of PBS with < 0.1% sodium azide and 0.1% gelatin.

## APPLICATIONS

JRAB (M-84) is recommended for detection of JRAB of mouse and rat origin by Western Blotting (starting dilution 1:200, dilution range 1:100-1:1000), immunoprecipitation [1-2 µg per 100-500 µg of total protein (1 ml of cell lysate)], immunofluorescence (starting dilution 1:50, dilution range 1:50-1:500) and solid phase ELISA (starting dilution 1:30, dilution range 1:30-1:3000).

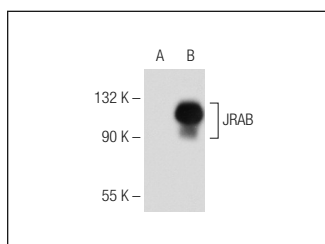
Suitable for use as control antibody for JRAB siRNA (m): sc-146332, JRAB shRNA Plasmid (m): sc-146332-SH and JRAB shRNA (m) Lentiviral Particles: sc-146332-V.

Molecular Weight of JRAB: 100 kDa.

## RECOMMENDED SECONDARY REAGENTS

To ensure optimal results, the following support (secondary) reagents are recommended: 1) Western Blotting: use goat anti-rabbit IgG-HRP: sc-2004 (dilution range: 1:2000-1:100,000) or Cruz Marker™ compatible goat anti-rabbit IgG-HRP: sc-2030 (dilution range: 1:2000-1:5000), Cruz Marker™ Molecular Weight Standards: sc-2035, TBS Blotto A Blocking Reagent: sc-2333 and Western Blotting Luminol Reagent: sc-2048. 2) Immunoprecipitation: use Protein A/G PLUS-Agarose: sc-2003 (0.5 ml agarose/2.0 ml). 3) Immunofluorescence: use goat anti-rabbit IgG-FITC: sc-2012 (dilution range: 1:100-1:400) or goat anti-rabbit IgG-TR: sc-2780 (dilution range: 1:100-1:400) with UltraCruz™ Mounting Medium: sc-24941.

## DATA



JRAB (M-84): sc-134683. Western blot analysis of JRAB expression in non-transfected: sc-117752 (A) and human JRAB transfected: sc-115725 (B) 293T whole cell lysates.

## STORAGE

Store at 4° C, **\*\*DO NOT FREEZE\*\***. Stable for one year from the date of shipment. Non-hazardous. No MSDS required.

## PROTOCOLS

See our web site at [www.scbt.com](http://www.scbt.com) or our catalog for detailed protocols and support products.