

NKRF (H-300): sc-134788

BACKGROUND

NKRF (NFκB-repressing factor), also known as transcription factor NRF or ITBA4 protein, is a ubiquitously expressed silencer protein. It localizes to the nucleoli but is also found in the nucleoplasm and contains one of each of the following nucleic acid binding domains: G-patch and R3H. NKRF represses the basal transcription of IFN-β, IL-8 and NOS2 by directly binding to their promoters. NKRF also binds to negative regulatory elements (NREs) and directly interacts with NFκB via its N-terminus. NKRF specifically inhibits the transcriptional activity of the NFκB proteins. In addition, NKRF contains a 5' untranslated region (UTR) that has internal ribosome entry segment (IRES) activity. The activity of the NKRF IRES module is decreased with the down-regulation of the RNA-binding protein, JKTBP1.

REFERENCES

1. Nourbakhsh, M. and Hauser, H. 2000. Constitutive silencing of IFN-β promoter is mediated by NRF (NFκB-repressing factor), a nuclear inhibitor of NFκB. *EMBO J.* 18: 6415-6425.
2. Nourbakhsh, M., et al. 2000. NRF, a nuclear inhibitor of NFκB proteins silencing interferon-β promoter. *Eur. Cytokine Netw.* 11: 500-501.
3. Feng, X., et al. 2002. Identification of a negative response element in the human inducible nitric-oxide synthase (hiNOS) promoter: the role of NFκB-repressing factor (NRF) in basal repression of the hiNOS gene. *Proc. Natl. Acad. Sci. USA* 99: 14212-14217.
4. Niedick, I., et al. 2004. Nucleolar localization and mobility analysis of the NFκB-repressing factor NRF. *J. Cell Sci.* 117: 3447-3458.
5. Jianfeng, D., et al. 2004. Cloning of the correct full length cDNA of NFκB-repressing factor. *Mol. Cells* 16: 397-401.
6. Dreikhausen, U., et al. 2005. NFκB-repressing factor inhibits elongation of human immunodeficiency virus type 1 transcription by DRB sensitivity-inducing factor. *Mol. Cell. Biol.* 25: 7473-7483.
7. Froese, N., et al. 2005. Innate immune responses in NFκB-repressing factor-deficient mice. *Mol. Cell. Biol.* 26: 293-302.
8. Reboll, M.R., et al. 2007. NRF IRES activity is mediated by RNA binding protein JKTBP1 and a 14 nt RNA element. *RNA* 13: 1328-1340.
9. Baird, S.D., et al. 2007. A search for structurally similar cellular internal ribosome entry sites. *Nucleic Acids Res.* 35: 4664-4677.

CHROMOSOMAL LOCATION

Genetic locus: NKRF (human) mapping to Xq24; Nkrf (mouse) mapping to X A3.3.

SOURCE

NKRF (H-300) is a rabbit polyclonal antibody raised against amino acids 1-300 mapping at the N-terminus of NKRF of human origin.

PRODUCT

Each vial contains 200 μg IgG in 1.0 ml of PBS with < 0.1% sodium azide and 0.1% gelatin.

APPLICATIONS

NKRF (H-300) is recommended for detection of NKRF of mouse, rat and human origin by Western Blotting (starting dilution 1:200, dilution range 1:100-1:1000), immunoprecipitation [1-2 μg per 100-500 μg of total protein (1 ml of cell lysate)], immunofluorescence (starting dilution 1:50, dilution range 1:50-1:500) and solid phase ELISA (starting dilution 1:30, dilution range 1:30-1:3000).

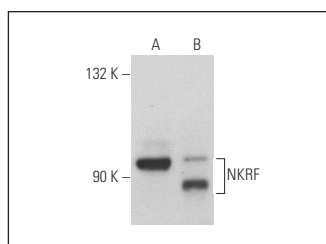
NKRF (H-300) is also recommended for detection of NKRF in additional species, including equine, canine, bovine and porcine.

Suitable for use as control antibody for NKRF siRNA (h): sc-72275, NKRF siRNA (m): sc-72276, NKRF shRNA Plasmid (h): sc-72275-SH, NKRF shRNA Plasmid (m): sc-72276-SH, NKRF shRNA (h) Lentiviral Particles: sc-72275-V and NKRF shRNA (m) Lentiviral Particles: sc-72276-V.

Molecular Weight of NKRF: 64 kDa.

Positive Controls: NKRF (h): 293T Lysate: sc-117208, T24 cell lysate: sc-2292 or A-431 whole cell lysate: sc-2201.

DATA



NKRF (H-300): sc-134788. Western blot analysis of NKRF expression in non-transfected: sc-117752 (A) and human NKRF transfected: sc-117208 (B) 293T whole cell lysates.

STORAGE

Store at 4° C, ****DO NOT FREEZE****. Stable for one year from the date of shipment. Non-hazardous. No MSDS required.

RESEARCH USE

For research use only, not for use in diagnostic procedures.

PROTOCOLS

See our web site at www.scbt.com or our catalog for detailed protocols and support products.



Try **NKRF (E-12): sc-365568**, our highly recommended monoclonal alternative to NKRF (H-300).