

TULP3 (N-18): sc-13479

BACKGROUND

Mutations in the mouse *Tub* gene gradually lead to obesity, strongly resembling the late-onset obesity observed in the human population. In addition to excessive deposition of adipose tissue, mice with the *Tub* phenotype also suffer retinal degeneration and neurosensory hearing loss. A human homolog of the *Tub* gene has been identified, as have three related proteins, called Tubby-like protein 1 (TULP1), TULP2 and TULP3. When compared to TULP1 and TULP2, TULP3 has a wider tissue expression and is phylogenetically more similar to *Tub* than either TULP1 or TULP2. TULP1, expressed specifically in the retina, maps to the chromosomal region known to be involved in retinitis pigmentosa, while TULP2 maps within the minimal interval for the rod-cone dystrophy. TULP3 maps to human chromosome 12p13, and shares 69% homology to mouse TULP3. Human RNA from testis, ovary, thyroid and spinal cord contain highly detectable levels of TULP3 transcripts. In the retina, TULP3 is expressed specifically in the inner nuclear layer and ganglion cell layer. TULP1, TULP2 and TULP3 may comprise a unique family of bipartite transcription factors.

REFERENCES

- Ohlemiller, K.K., Hughes, R.M., Mosinger-Ogilvie, J., Speck, J.D., Grosfeld, D.H. and Silverman, M.S. 1995. Cochlear and retinal degeneration in the Tubby mouse. *Neuroreport* 6: 845-849.
- Noben-Trauth, K., Naggert, J.K., North, M.A. and Nishina, P.M. 1996. A candidate gene for the mouse mutation Tubby. *Nature* 380: 534-538.
- North, M.A., Naggert, J.K., Yan, Y., Noben-Trauth, K. and Nishina, P.M. 1997. Molecular characterization of *Tub*, TULP1, and TULP2, members of the novel Tubby gene family and their possible relation to ocular diseases. *Proc. Natl. Acad. Sci. USA* 94: 3128-3133.
- Gu, S., Lennon A., Li Y., Lorenz, B., Fossarello M., North, M., Gal, A. and Wright, A. 1998. Tubby-like protein 1 mutations in autosomal recessive retinitis pigmentosa. *Lancet* 351: 1103-1104.
- Hagstrom, S.A., North, M.A., Nishina, P.L., Berson, E.L. and Dryja, T.P. 1998. Recessive mutations in the gene encoding the Tubby-like protein TULP1 in patients with retinitis pigmentosa. *Nat. Genet.* 18: 174-176.
- Banerjee, P., Kleyn, P.W., Knowles, J.A., Lewis, C.A., Ross, B.M., Parano, E., Kovats, S.G., Lee, J.J., Penchaszadeh, G.K., Ott, J., Jacobson, S.G. and Gilliam, T.C. 1998. TULP1 mutation in two extended Dominican kindreds with autosomal recessive retinitis pigmentosa. *Nat. Genet.* 18: 177-179.
- Nishina, P.M., North, M.A., Ikeda, A., Yan, Y. and Naggert, J.K. 1998. Molecular characterization of a novel Tubby gene family member, TULP3, in mouse and humans. *Genomics* 54: 215-220.
- Ikeda, S., He, W., Ikeda, A., Nabbert, J.K., North, M.A. and Nishina, P.M. 1999. Cells-specific expression of tubby gene family members (*Tub*, *Tulp1*, 2, and 3) in the retina. *Invest. Ophthalmol. Vis. Sci.* 40: 2706-2712.

CHROMOSOMAL LOCATION

Genetic locus: TULP3 (human) mapping to 12p13.33.

SOURCE

TULP3 (N-18) is an affinity purified goat polyclonal antibody raised against a peptide mapping at the N-terminus of TULP3 of human origin.

PRODUCT

Each vial contains 200 µg IgG in 1.0 ml of PBS with < 0.1% sodium azide and 0.1% gelatin.

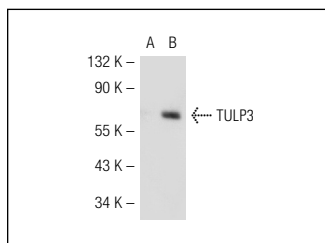
Blocking peptide available for competition studies, sc-13479 P, (100 µg peptide in 0.5 ml PBS containing < 0.1% sodium azide and 0.2% BSA).

APPLICATIONS

TULP3 (N-18) is recommended for detection of TULP3 of human origin by Western Blotting (starting dilution 1:200, dilution range 1:100-1:1000), immunoprecipitation [1-2 µg per 100-500 µg of total protein (1 ml of cell lysate)], immunofluorescence (starting dilution 1:50, dilution range 1:50-1:500) and solid phase ELISA (starting dilution 1:30, dilution range 1:30-1:3000).

Suitable for use as control antibody for TULP3 siRNA (h): sc-77355, TULP3 shRNA Plasmid (h): sc-77355-SH and TULP3 shRNA (h) Lentiviral Particles: sc-77355-V.

DATA



TULP3 (N-18): sc-13479. Western blot analysis of TULP3 expression in non-transfected: sc-117752 (A) and human TULP3 transfected: sc-115216 (B) 293T whole cell lysates.

STORAGE

Store at 4° C, ****DO NOT FREEZE****. Stable for one year from the date of shipment. Non-hazardous. No MSDS required.

RESEARCH USE

For research use only, not for use in diagnostic procedures.

MONOS
Satisfaction
Guaranteed

Try **TULP3 (H-10): sc-393411** or **TULP3 (G-4): sc-514733**, our highly recommended monoclonal alternatives to TULP3 (N-18).