

Reg III α (M-44): sc-134855

BACKGROUND

The regeneration (Reg) family consists of secretory proteins involved in liver, pancreatic, gastric and intestinal cell proliferation or differentiation. Members of the Reg family are divided into four subclasses, designated types I, II, III and IV. They have been implicated in the regulation of cell growth, tumorigenesis and the progression of cancer. Specifically, increased expression of Reg III α results in pancreatic inflammation and liver carcinogenesis. Reg III α , also designated pancreatitis-associated protein, localizes to the apical region of pancreatic acinar cells and is similar to the C-type lectin superfamily. The Reg III α protein is mainly expressed in the intestine, with lower expression detected in healthy pancreas. It is also detected in pancreatic juice as a result of pancreatic inflammation.

REFERENCES

1. Nata, K., Liu, Y., Xu, L., Ikeda, T., Akiyama, T., Noguchi, N., Kawaguchi, S., Yamauchi, A., Takahashi, I., Shervani, N.J., Onogawa, T., Takasawa, S. and Okamoto, H. 2004. Molecular cloning, expression and chromosomal localization of a novel human REG family gene, REG3. *Gene* 340: 161-170.
2. Lieu, H.T., Batteux, F., Simon, M.T., Cortes, A., Nicco, C., Zavala, F., Pauloin, A., Tralhao, J.G., Soubrane, O., Weill, B., Brechot, C. and Christa, L. 2005. HIP/PAP accelerates liver regeneration and protects against acetaminophen injury in mice. *Hepatology* 42: 618-626.
3. Yu, T.T., McIntyre, J.C., Bose, S.C., Hardin, D., Owen, M.C. and McClintock, T.S. 2005. Differentially expressed transcripts from phenotypically identified olfactory sensory neurons. *J. Comp. Neurol.* 483: 251-262.
4. Namikawa, K., Fukushima, M., Murakami, K., Suzuki, A., Takasawa, S., Okamoto, H. and Kiyama, H. 2005. Expression of Reg/PAP family members during motor nerve regeneration in rat. *Biochem. Biophys. Res. Commun.* 332: 126-134.
5. Chen, C.Y., Lin, X.Z., Wu, H.C. and Shiesh, S.C. 2005. The value of biliary Amylase and hepatocarcinoma-intestine-protein I (HIP/PAP-I) in diagnosing biliary malignancies. *Clin. Biochem.* 38: 520-525.
6. Jamal, A.M., Lipsett, M., Sladek, R., Laganière, S., Hanley, S. and Rosenberg, L. 2005. Morphogenetic plasticity of adult human pancreatic islets of Langerhans. *Cell Death Differ.* 12: 702-712.

CHROMOSOMAL LOCATION

Genetic locus: Reg3a (mouse) mapping to 6 C3.

SOURCE

Reg III α (M-44) is a rabbit polyclonal antibody raised against amino acids 27-70 mapping within an internal region of Reg III α of mouse origin.

PRODUCT

Each vial contains 200 μ g IgG in 1.0 ml of PBS with < 0.1% sodium azide and 0.1% gelatin.

RESEARCH USE

For research use only, not for use in diagnostic procedures.

APPLICATIONS

Reg III α (M-44) is recommended for detection of Reg III α of mouse and rat origin by Western Blotting (starting dilution 1:200, dilution range 1:100-1:1000), immunoprecipitation [1-2 μ g per 100-500 μ g of total protein (1 ml of cell lysate)], immunofluorescence (starting dilution 1:50, dilution range 1:50-1:500) and solid phase ELISA (starting dilution 1:30, dilution range 1:30-1:3000).

Suitable for use as control antibody for ReG III α siRNA (m): sc-61451, ReG III α shRNA Plasmid (m): sc-61451-SH and ReG III α shRNA (m) Lentiviral Particles: sc-61451-V.

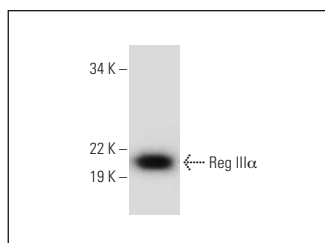
Molecular Weight of Reg III α : 19 kDa.

Positive Controls: mouse small intestine extract: sc-364252 or mouse pancreas extract: sc-364244.

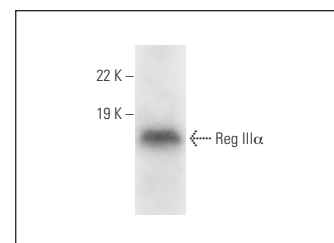
RECOMMENDED SECONDARY REAGENTS

To ensure optimal results, the following support (secondary) reagents are recommended: 1) Western Blotting: use goat anti-rabbit IgG-HRP: sc-2004 (dilution range: 1:2000-1:100,000) or Cruz Marker™ compatible goat anti-rabbit IgG-HRP: sc-2030 (dilution range: 1:2000-1:5000), Cruz Marker™ Molecular Weight Standards: sc-2035, TBS Blotto A Blocking Reagent: sc-2333 and Western Blotting Luminol Reagent: sc-2048. 2) Immunoprecipitation: use Protein A/G PLUS-Agarose: sc-2003 (0.5 ml agarose/2.0 ml). 3) Immunofluorescence: use goat anti-rabbit IgG-FITC: sc-2012 (dilution range: 1:100-1:400) or goat anti-rabbit IgG-TR: sc-2780 (dilution range: 1:100-1:400) with UltraCruz™ Mounting Medium: sc-24941.

DATA



Reg III α (M-44): sc-134855. Western blot analysis of Reg III α expression in mouse small intestine tissue extract.



Reg III α (M-44): sc-134855. Western blot analysis of Reg III α expression in mouse pancreas tissue extract.

STORAGE

Store at 4° C, **DO NOT FREEZE**. Stable for one year from the date of shipment. Non-hazardous. No MSDS required.

MONOS
Satisfaction
Guaranteed

Try **Reg III α (31R-7): sc-80319**, our highly recommended monoclonal alternative to Reg III α (M-44).