

CYP4X1 (H-90): sc-134897

BACKGROUND

Chromosome 1 is the largest human chromosome spanning about 260 million base pairs and making up 8% of the human genome. There are about 3,000 genes on chromosome 1, and considering the great number of genes there are also a large number of diseases associated with chromosome 1. Notably, the rare aging disease Hutchinson-Gilford progeria is associated with the LMNA gene which encodes lamin A. When defective, the LMNA gene product can build up in the nucleus and cause characteristic nuclear blebs. The mechanism of rapidly enhanced aging is unclear and is a topic of continuing exploration. The MUTYH gene is located on chromosome 1 and is partially responsible for familial adenomatous polyposis. Stickler syndrome, Parkinsons, Gaucher disease and Usher syndrome are also associated with chromosome 1. A break-point has been identified in 1q which disrupts the DISC1 gene and is linked to schizophrenia. Aberrations in chromosome 1 are found in a variety of cancers including head and neck cancer, malignant melanoma and multiple myeloma. The CYP4X1 gene product has been provisionally designated CYP4X1 pending further characterization.

REFERENCES

1. Watson, M.L., Kingsmore, S.F., Johnston, G.I., Siegelman, M.H., Le Beau, M.M., Lemons, R.S., Bora, N.S., Howard, T.A., Weissman, I.L., McEver, R.P., et al. 1990. Genomic organization of the selectin family of leukocyte adhesion molecules on human and mouse chromosome 1. *J. Exp. Med.* 172: 263-272.
2. Blackwood, D.H., Fordyce, A., Walker, M.T., St Clair, D.M., Porteous, D.J. and Muir, W.J. 2001. Schizophrenia and affective disorders— cosegregation with a translocation at chromosome 1q42 that directly disrupts brain-expressed genes: clinical and P300 findings in a family. *Am. J. Hum. Genet.* 69: 428-433
3. Weise, A., Starke, H., Mrasek, K., Claussen, U. and Liehr, T. 2005. New insights into the evolution of chromosome 1. *Cytogenet. Genome Res.* 108: 217-222.
4. Lans, H. and Hoeijmakers, J.H. 2006. Cell biology: aging nucleus gets out of shape. *Nature* 440: 32-34.
5. Gregory, S.G., Barlow, K.F., McLay, K.E., Kaul, R., Swarbreck, D., Dunham, A., Scott, C.E., Howe, K.L., Woodfine, K.C., Spencer, C.A., Jones, M.C., Gillson, C., Searle, S., Zhou, Y., Kokocinski, F., McDonald, L. et al. 2006. The DNA sequence and biological annotation of human chromosome 1. *Nature* 441: 315-321.
6. Hennah, W., Thomson, P., Peltonen, L. and Porteous, D. 2006. Genes and schizophrenia: beyond schizophrenia: the role of DISC-1 in major mental illness. *Schizophr. Bull.* 32: 409-416.
7. Marzin, Y., Jamet, D., Douet-Guilbert, N., Morel, F., Le Bris, M.J., Morice, P., Abgrall, J.F., Berthou, C. and De Braekeleer, M. 2006. Chromosome 1 abnormalities in multiple myeloma. *Anticancer Res.* 26: 953-959.
8. McClintock, D., Gordon, L.B. and Djabali, K. 2006. Hutchinson-Gilford progeria mutant Lamin A primarily targets human vascular cells as detected by an anti-Lamin A G608G antibody. *Proc. Natl. Acad. Sci. USA* 103: 2154-2159.

CHROMOSOMAL LOCATION

Genetic locus: CYP4X1 (human) mapping to 1p33.

SOURCE

CYP4X1 (H-90) is a rabbit polyclonal antibody raised against amino acids 196-285 mapping within an internal region of CYP4X1 of human origin.

PRODUCT

Each vial contains 200 µg IgG in 1.0 ml of PBS with < 0.1% sodium azide and 0.1% gelatin.

APPLICATIONS

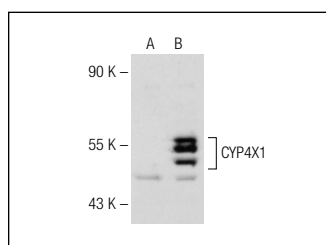
CYP4X1 (H-90) is recommended for detection of CYP4X1 of human origin by Western Blotting (starting dilution 1:200, dilution range 1:100-1:1000), immunoprecipitation [1-2 µg per 100-500 µg of total protein (1 ml of cell lysate)], immunofluorescence (starting dilution 1:50, dilution range 1:50-1:500) and solid phase ELISA (starting dilution 1:30, dilution range 1:30-1:3000).

Suitable for use as control antibody for CYP4X1 siRNA (h): sc-88651, CYP4X1 shRNA Plasmid (h): sc-88651-SH and CYP4X1 shRNA (h) Lentiviral Particles: sc-88651-V.

Molecular Weight of CYP4X1: 59 kDa.

Positive Controls: CYP4X1 (h2): 293T Lysate: sc-174962.

DATA



CYP4X1 (H-90): sc-134897. Western blot analysis of CYP4X1 expression in non-transfected: sc-117752 (A) and human CYP4X1 transfected: sc-174962 (B) 293T whole cell lysates.

STORAGE

Store at 4° C, ****DO NOT FREEZE****. Stable for one year from the date of shipment. Non-hazardous. No MSDS required.

RESEARCH USE

For research use only, not for use in diagnostic procedures.

PROTOCOLS

See our web site at www.scbt.com or our catalog for detailed protocols and support products.