

pki β (H-50): sc-134914



The Power to Question

BACKGROUND

The second messenger cyclic AMP (cAMP) mediates a diverse array of cellular responses such as proliferation, ion transport, regulation of metabolism and gene transcription by activating the cAMP-dependent protein kinase (cAPK or PKA). Activation of PKA occurs when cAMP binds to the two regulatory subunits of tetrameric PKA, resulting in the release of two active catalytic subunits. Two forms of a specific PKA inhibitor molecule, designated pki α and pki β , have been described and are suggested to regulate PKA activity in different portions of the central nervous system. For instance, pki α is expressed abundantly in the adult mouse brain, particularly in the cerebellum, hypothalamus, hippocampus and cortex. In contrast, pki β is present at a much lower level in most brain regions, and is found in significant amounts only in the cerebellum and in a few distinct nuclei within the pons, medulla and hypothalamus.

REFERENCES

1. Beavo, J.A., Bechtel, P.J. and Krebs, E.G. 1974. Activation of protein kinase by physiological concentrations of cyclic AMP. *Proc. Natl. Acad. Sci. USA* 71: 3580-3583.
2. Krebs, E.G. and Beavo, J.A. 1980. Phosphorylation and dephosphorylation of enzymes. *Annu. Rev. Biochem.* 48: 923-959.
3. Maldonado, F. and Hanks, S.K. 1988. A cDNA clone encoding human cAMP-dependent protein kinase catalytic subunit C α . *Nucleic Acids Res.* 16: 8189-8190.
4. Beebe, S.J., Oyen, O., Sandberg, M., Froya, A., Hansson, V. and Jahnsen, T. 1990. Molecular cloning of a tissue-specific protein kinase (C γ) from human testis—representing a third isoform for the catalytic subunit of cAMP-dependent protein kinase. *Mol. Endocrinol.* 4: 465-475.
5. Meinkoth, J.L., Alberts, A.S., Went, W., Fantozzi, D., Taylor, S.S., Hagiwara, M., Montminy, M. and Feramisco, J.R. 1993. Signal transduction through the cAMP-dependent protein kinase. *Mol. Cell. Biochem.* 127/128: 179-186.
6. Marchetto, G.S. and Henry, H.L. 1995. Cloning and sequencing of the cDNA encoding the avian kidney cAMP-dependent protein kinase inhibitor protein. *Gene* 158: 303-304.
7. Seasholtz, A.F., Gamm, D.M., Ballestero, R.P., Scarpetta, M.A. and Uhler, M.D. 1995. Differential expression of mRNAs for protein kinase inhibitor isoforms in mouse brain. *Proc. Natl. Acad. Sci. USA* 92: 1734-1738.

CHROMOSOMAL LOCATION

Genetic locus: PKIB (human) mapping to 6q22.31; Pkib (mouse) mapping to 10 B4.

SOURCE

pki β (H-50) is a rabbit polyclonal antibody raised against amino acids 1-50 mapping at the N-terminus of pki β of human origin.

PRODUCT

Each vial contains 200 μ g IgG in 1.0 ml of PBS with < 0.1% sodium azide and 0.1% gelatin.

APPLICATIONS

pki β (H-50) is recommended for detection of pki β of mouse, rat and human origin by Western Blotting (starting dilution 1:200, dilution range 1:100-1:1000), immunoprecipitation [1-2 μ g per 100-500 μ g of total protein (1 ml of cell lysate)], immunofluorescence (starting dilution 1:50, dilution range 1:50-1:500) and solid phase ELISA (starting dilution 1:30, dilution range 1:30-1:3000); may cross-react with pki α and pki γ .

Suitable for use as control antibody for pki β siRNA (h): sc-44022, pki β siRNA (m): sc-62817, pki β shRNA Plasmid (h): sc-44022-SH, pki β shRNA Plasmid (m): sc-62817-SH, pki β shRNA (h) Lentiviral Particles: sc-44022-V and pki β shRNA (m) Lentiviral Particles: sc-62817-V.

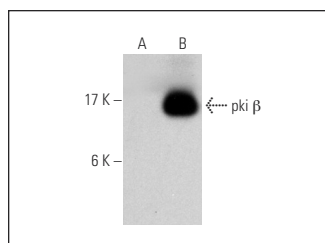
Molecular Weight of pki β : 8 kDa.

Positive Controls: pki β transfected CHO whole cell lysate.

RECOMMENDED SECONDARY REAGENTS

To ensure optimal results, the following support (secondary) reagents are recommended: 1) Western Blotting: use goat anti-rabbit IgG-HRP: sc-2004 (dilution range: 1:2000-1:100,000) or Cruz Marker™ compatible goat anti-rabbit IgG-HRP: sc-2030 (dilution range: 1:2000-1:5000), Cruz Marker™ Molecular Weight Standards: sc-2035, TBS Blotto A Blocking Reagent: sc-2333 and Western Blotting Luminol Reagent: sc-2048. 2) Immunoprecipitation: use Protein A/G PLUS-Agarose: sc-2003 (0.5 ml agarose/2.0 ml). 3) Immunofluorescence: use goat anti-rabbit IgG-FITC: sc-2012 (dilution range: 1:100-1:400) or goat anti-rabbit IgG-TR: sc-2780 (dilution range: 1:100-1:400) with UltraCruz™ Mounting Medium: sc-24941.

DATA



pki β (H-50): sc-134914. Western blot analysis of pki β expression in non-transfected CHO (A) and human pki β transfected CHO (B) whole cell lysates.

STORAGE

Store at 4° C, **DO NOT FREEZE**. Stable for one year from the date of shipment. Non-hazardous. No MSDS required.

RESEARCH USE

For research use only, not for use in diagnostic procedures.

PROTOCOLS

See our web site at www.scbt.com or our catalog for detailed protocols and support products.