

Maestro (FL-248): sc-134943

BACKGROUND

Maestro, also known as MRO, B29 or C18orf3, is a 248 amino acid protein that localizes to the nucleolus and contains one HEAT repeat. Expressed ubiquitously, Maestro exists as multiple alternatively spliced isoforms and is thought to play a role in sexual development and fertility. The gene encoding Maestro may be involved in tumor suppression and maps to human chromosome 18, which houses over 300 protein-coding genes and contains nearly 76 million bases. There are a variety of diseases associated with defects in chromosome 18-localized genes, some of which include Trisomy 18 (also known as Edwards syndrome), Niemann-Pick disease, hereditary hemorrhagic telangiectasia, erythropoietic protoporphyria and follicular lymphomas.

REFERENCES

- Carstea, E.D., Polymeropoulos, M.H., Parker, C.C., Detera-Wadleigh, S.D., O'Neill, R.R., Patterson, M.C., Goldin, E., Xiao, H., Straub, R.E., Vanier, M.T., et al. 1993. Linkage of Niemann-Pick disease type C to human chromosome 18. *Proc. Natl. Acad. Sci. USA* 90: 2002-2004.
- Yanaihara, N., Kohno, T., Takakura, S., Takei, K., Otsuka, A., Sunaga, N., Takahashi, M., Yamazaki, M., Tashiro, H., Fukuzumi, Y., Fujimori, Y., Hagiwara, K., Tanaka, T. and Yokota, J. 2001. Physical and transcriptional map of a 311-kb segment of chromosome 18q21, a candidate lung tumor suppressor locus. *Genomics* 72: 169-179.
- Smith, L., Van Hateren, N., Willan, J., Romero, R., Blanco, G., Siggers, P., Walsh, J., Banerjee, R., Denny, P., Ponting, C. and Greenfield, A. 2003. Candidate testis-determining gene, Maestro (Mro), encodes a novel HEAT repeat protein. *Dev. Dyn.* 227: 600-607.
- Grosso, S., Pucci, L., Di Bartolo, R.M., Gobbi, G., Bartalini, G., Anichini, C., Scarinci, R., Balestri, M., Farnetani, M.A., Cioni, M., Morgese, G. and Balestri, P. 2005. Chromosome 18 aberrations and epilepsy: a review. *Am. J. Med. Genet. A* 134: 88-94.
- Blecher, S.R. and Erickson, R.P. 2007. Genetics of sexual development: a new paradigm. *Am. J. Med. Genet. A* 143A: 3054-3068.
- Smith, L., Willan, J., Warr, N., Brook, F.A., Cheeseman, M., Sharpe, R., Siggers, P. and Greenfield, A. 2008. The Maestro (Mro) gene is dispensable for normal sexual development and fertility in mice. *PLoS ONE* 3: e4091.
- Online Mendelian Inheritance in Man, OMIM[™]. 2008. Johns Hopkins University, Baltimore, MD. MIM Number: 608080. World Wide Web URL: <http://www.ncbi.nlm.nih.gov/omim/>

CHROMOSOMAL LOCATION

Genetic locus: MRO (human) mapping to 18q21; Mro (mouse) mapping to 18 E2.

SOURCE

Maestro (FL-248) is a rabbit polyclonal antibody raised against amino acids 1-248 representing full length Maestro of human origin.

RESEARCH USE

For research use only, not for use in diagnostic procedures.

PRODUCT

Each vial contains 200 µg IgG in 1.0 ml of PBS with < 0.1% sodium azide and 0.1% gelatin.

APPLICATIONS

Maestro (FL-248) is recommended for detection of Maestro of mouse, rat and human origin by Western Blotting (starting dilution 1:200, dilution range 1:100-1:1000), immunoprecipitation [1-2 µg per 100-500 µg of total protein (1 ml of cell lysate)], immunofluorescence (starting dilution 1:50, dilution range 1:50-1:500) and solid phase ELISA (starting dilution 1:30, dilution range 1:30-1:3000).

Suitable for use as control antibody for Maestro siRNA (h): sc-75730, Maestro siRNA (m): sc-149214, Maestro shRNA Plasmid (h): sc-75730-SH, Maestro shRNA Plasmid (m): sc-149214-SH, Maestro shRNA (h) Lentiviral Particles: sc-75730-V and Maestro shRNA (m) Lentiviral Particles: sc-149214-V.

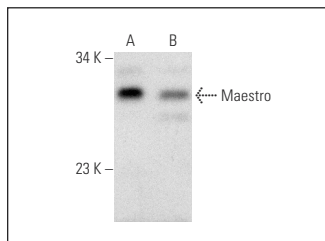
Molecular Weight of Maestro: 29 kDa.

Positive Controls: Jurkat whole cell lysate: sc-2204 or HeLa whole cell lysate: sc-2200.

RECOMMENDED SECONDARY REAGENTS

To ensure optimal results, the following support (secondary) reagents are recommended: 1) Western Blotting: use goat anti-rabbit IgG-HRP: sc-2004 (dilution range: 1:2000-1:100,000) or Cruz Marker[™] compatible goat anti-rabbit IgG-HRP: sc-2030 (dilution range: 1:2000-1:5000), Cruz Marker[™] Molecular Weight Standards: sc-2035, TBS Blotto A Blocking Reagent: sc-2333 and Western Blotting Luminol Reagent: sc-2048. 2) Immunoprecipitation: use Protein A/G PLUS-Agarose: sc-2003 (0.5 ml agarose/2.0 ml). 3) Immunofluorescence: use goat anti-rabbit IgG-FITC: sc-2012 (dilution range: 1:100-1:400) or goat anti-rabbit IgG-TR: sc-2780 (dilution range: 1:100-1:400) with UltraCruz[™] Mounting Medium: sc-24941.

DATA



Maestro (FL-248): sc-134943. Western blot analysis of Maestro expression in Jurkat (A) and HeLa (B) whole cell lysates.

STORAGE

Store at 4° C, **DO NOT FREEZE** Stable for one year from the date of shipment. Non-hazardous. No MSDS required.