

CHMP4B (H-40): sc-134946

BACKGROUND

The charged multivesicular body proteins or chromatin modifying proteins, commonly designated CHMPs, belong to the vacuolar sorting protein family and function as chromatin-modifying proteins. CHMP1-6 are all components of ESCRT (endosomal sorting complex required for transport) I, II or III complexes. These complexes are crucial for sorting endosomal articles into multivesicular bodies (MVBs), and are also required for the formation of these bodies. CHMP4B (charged multivesicular body protein 4b) is a 224 amino acid protein that interacts with Alix, which results in the redistribution of Alix from the cytoplasm to the perinuclear area. Overexpression of CHMP4B induces accumulation of ubiquitinated proteins and inhibits degradation of endocytosed EGF. Defects in the gene encoding CHMP4B can cause posterior polar cataract type 3 (CTPP3), a disease characterized by distinct opacity located at the back of the lens resulting in visual impairment and eventual blindness.

REFERENCES

1. Katoh, K., et al. 2003. The ALG-2-interacting protein Alix associates with CHMP4B, a human homologue of yeast Snf7 that is involved in multivesicular body sorting. *J. Biol. Chem.* 278: 39104-39113.
2. Katoh, K., et al. 2004. CHMP4b is a major binding partner of the ALG-2-interacting protein Alix among the three CHMP4 isoforms. *Arch. Biochem. Biophys.* 421: 159-165.
3. Yorikawa, C., et al. 2005. Human CHMP6, a myristoylated ESCRT-III protein, interacts directly with an ESCRT-II component EAP20 and regulates endosomal cargo sorting. *Biochem. J.* 387: 17-26.
4. Horii, M., et al. 2006. CHMP7, a novel ESCRT-III-related protein, associates with CHMP4B and functions in the endosomal sorting pathway. *Biochem. J.* 400: 23-32.
5. Mahul-Mellier, A.L., et al. 2006. Alix, making a link between apoptosis-linked gene-2, the endosomal sorting complexes required for transport, and neuronal death *in vivo*. *J. Neurosci.* 26: 542-549.

CHROMOSOMAL LOCATION

Genetic locus: CHMP4B (human) mapping to 20q11.22; Chmp4b (mouse) mapping to 2 H1.

SOURCE

CHMP4B (H-40) is a rabbit polyclonal antibody raised against amino acids 1-40 mapping at the N-terminus of CHMP4B of human origin.

PRODUCT

Each vial contains 200 µg IgG in 1.0 ml of PBS with < 0.1% sodium azide and 0.1% gelatin.

STORAGE

Store at 4° C, **DO NOT FREEZE**. Stable for one year from the date of shipment. Non-hazardous. No MSDS required.

APPLICATIONS

CHMP4B (H-40) is recommended for detection of CHMP4B of mouse, rat and human origin by Western Blotting (starting dilution 1:200, dilution range 1:100-1:1000), immunoprecipitation [1-2 µg per 100-500 µg of total protein (1 ml of cell lysate)], immunofluorescence (starting dilution 1:50, dilution range 1:50-1:500) and solid phase ELISA (starting dilution 1:30, dilution range 1:30-1:3000).

CHMP4B (H-40) is also recommended for detection of CHMP4B in additional species, including canine, bovine and porcine.

Suitable for use as control antibody for CHMP4B siRNA (h): sc-72897, CHMP4B siRNA (m): sc-72898, CHMP4B shRNA Plasmid (h): sc-72897-SH, CHMP4B shRNA Plasmid (m): sc-72898-SH, CHMP4B shRNA (h) Lentiviral Particles: sc-72897-V and CHMP4B shRNA (m) Lentiviral Particles: sc-72898-V.

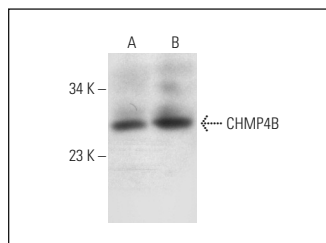
Molecular Weight of CHMP4B: 25 kDa.

Positive Controls: human skeletal muscle extract: sc-363776, human heart extract: sc-363763 or EOC 20 whole cell lysate: sc-364187.

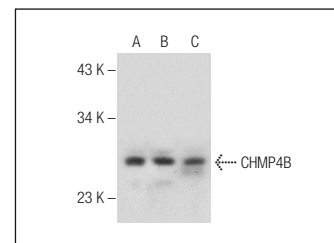
RECOMMENDED SECONDARY REAGENTS

To ensure optimal results, the following support (secondary) reagents are recommended: 1) Western Blotting: use goat anti-rabbit IgG-HRP: sc-2004 (dilution range: 1:2000-1:100,000) or Cruz Marker™ compatible goat anti-rabbit IgG-HRP: sc-2030 (dilution range: 1:2000-1:5000), Cruz Marker™ Molecular Weight Standards: sc-2035, TBS Blotto A Blocking Reagent: sc-2333 and Western Blotting Luminol Reagent: sc-2048. 2) Immunoprecipitation: use Protein A/G PLUS-Agarose: sc-2003 (0.5 ml agarose/2.0 ml). 3) Immunofluorescence: use goat anti-rabbit IgG-FITC: sc-2012 (dilution range: 1:100-1:400) or goat anti-rabbit IgG-TR: sc-2780 (dilution range: 1:100-1:400) with UltraCruz™ Mounting Medium: sc-24941.

DATA



CHMP4B (H-40): sc-134946. Western blot analysis of CHMP4B expression in human heart (A) and human skeletal muscle (B) tissue extracts.



CHMP4B (H-40): sc-134946. Western blot analysis of CHMP4B expression in EOC 20 (A) and MH-S (B) whole cell lysates and mouse brain tissue extract (C).

RESEARCH USE

For research use only, not for use in diagnostic procedures.

PROTOCOLS

See our web site at www.scbt.com or our catalog for detailed protocols and support products.