

# WRP (H-150): sc-134955

## BACKGROUND

WAVE-associated Rac GTPase-activating protein (WRP), also known as SLIT-ROBO Rho GTPase-activating protein 3 (srGAP3) and mental disorder-activating GAP (MEGAP), is a 1,099 amino acid protein containing one FCH domain, one Rho-GAP domain and one SH3 domain. Expressed highly in brain, and in lower levels in kidney, WRP is thought to play a role in cell migration through its interaction with Cdc42 and Rac1. Cdc42 and Rac1 are two intracellular signaling proteins that regulate the multistep cell migration process. WRP downregulates Cdc42 and Rac1 activity, thereby impairing actin and microtubule dynamics, the formation of protrusions, and total cell migration. Defects in the gene encoding WRP have been linked to severe idiopathic mental retardation. Three isoforms of WRP exist as a result of alternative splicing events.

## REFERENCES

1. Miki, H., et al. 1998. WAVE, a novel WASP-family protein involved in actin reorganization induced by Rac. *EMBO J.* 17: 6932-6941.
2. Wong, K., et al. 2001. Signal transduction in neuronal migration: roles of GTPase activating proteins and the small GTPase Cdc42 in the Slit-Robo pathway. *Cell* 107: 209-221.

## CHROMOSOMAL LOCATION

Genetic locus: SRGAP3 (human) mapping to 3p25.3; Srgap3 (mouse) mapping to 6 E3.

## SOURCE

WRP (H-150) is a rabbit polyclonal antibody raised against amino acids 821-970 mapping near the C-terminus of WRP of human origin.

## PRODUCT

Each vial contains 200 µg IgG in 1.0 ml of PBS with < 0.1% sodium azide and 0.1% gelatin.

## APPLICATIONS

WRP (H-150) is recommended for detection of WRP of mouse, rat and human origin by Western Blotting (starting dilution 1:200, dilution range 1:100-1:1000), immunoprecipitation [1-2 µg per 100-500 µg of total protein (1 ml of cell lysate)], immunofluorescence (starting dilution 1:50, dilution range 1:50-1:500) and solid phase ELISA (starting dilution 1:30, dilution range 1:30-1:3000).

WRP (H-150) is also recommended for detection of WRP in additional species, including equine, canine and bovine.

Suitable for use as control antibody for WRP siRNA (h): sc-76929, WRP siRNA (m): sc-76930, WRP shRNA Plasmid (h): sc-76929-SH, WRP shRNA Plasmid (m): sc-76930-SH, WRP shRNA (h) Lentiviral Particles: sc-76929-V and WRP shRNA (m) Lentiviral Particles: sc-76930-V.

Molecular Weight (predicted) of WRP: 124 kDa.

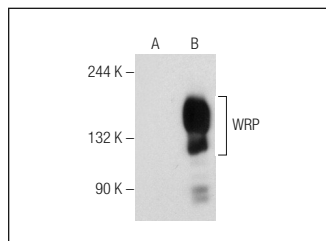
Molecular Weight (observed) of WRP: 140 kDa.

Positive Controls: WRP (h): 293T Lysate: sc-372331.

## RECOMMENDED SECONDARY REAGENTS

To ensure optimal results, the following support (secondary) reagents are recommended: 1) Western Blotting: use goat anti-rabbit IgG-HRP: sc-2004 (dilution range: 1:2000-1:100,000) or Cruz Marker™ compatible goat anti-rabbit IgG-HRP: sc-2030 (dilution range: 1:2000-1:5000), Cruz Marker™ Molecular Weight Standards: sc-2035, TBS Blotto A Blocking Reagent: sc-2333 and Western Blotting Luminol Reagent: sc-2048. 2) Immunoprecipitation: use Protein A/G PLUS-Agarose: sc-2003 (0.5 ml agarose/2.0 ml). 3) Immunofluorescence: use goat anti-rabbit IgG-FITC: sc-2012 (dilution range: 1:100-1:400) or goat anti-rabbit IgG-TR: sc-2780 (dilution range: 1:100-1:400) with UltraCruz™ Mounting Medium: sc-24941.

## DATA



WRP (H-150): sc-134955. Western blot analysis of WRP expression in non-transfected: sc-117752 (A) and human WRP transfected: sc-372331 (B) 293T whole cell lysates.

## STORAGE

Store at 4° C, **\*\*DO NOT FREEZE\*\***. Stable for one year from the date of shipment. Non-hazardous. No MSDS required.

## RESEARCH USE

For research use only, not for use in diagnostic procedures.

## PROTOCOLS

See our web site at [www.scbt.com](http://www.scbt.com) or our catalog for detailed protocols and support products.



Try **WRP (E-11): sc-374503** or **WRP (B-3): sc-514179**, our highly recommended monoclonal alternatives to WRP (H-150).