

LAPSER1 (H-98): sc-134971

BACKGROUND

LAPSER1, also called leucine zipper putative tumor suppressor 2, is a member of the LZTS family. Due to its deletion in multiple cancers, including prostate tumors, LAPSER1 is purported to be a tumor suppressor. In cancer cell lines, the overexpression of LAPSER1 can lead to growth inhibition and colony-forming efficiency. LAPSER1 is highly expressed in testis and prostate, but can be detected at lower levels in spleen, thymus, uterus, small intestine and colon. LAPSER1 co-localizes with γ Tubulin, MKLP-1 and p80 Katanin. LAPSER1 is involved in cytokinesis. The disruption of LAPSER1, which is accompanied by the mislocalization of p80 Katanin, results in malformation of the central spindle. This is a potential impetus for carcinogenesis.

REFERENCES

1. Cabeza-Arvelaiz, Y., Thompson, T.C., Sepulveda, J.L. and Chinault, A.C. 2001. LAPSER1: a novel candidate tumor suppressor gene from 10q24.3. *Oncogene* 20: 6707-6717.
2. Teufel, A., Weinmann, A., Galle, P.R. and Lohse, A.W. 2005. In silico characterization of LZTS3, a potential tumor suppressor. *Oncol. Rep.* 14: 547-551.
3. Thyssen, G., Li, T.H., Lehmann, L., Zhuo, M., Sharma, M. and Sun, Z. 2006. LZTS2 is a novel β -catenin-interacting protein and regulates the nuclear export of β -catenin. *Mol. Cell. Biol.* 26: 8857-8867.
4. Sudo, H. and Maru, Y. 2007. LAPSER1 is a putative cytokinetic tumor suppressor that shows the same centrosome and midbody subcellular localization pattern as p80 Katanin. *FASEB J.* 21: 2086-2100.
5. Iida, M., Anna, C.H., Gaskin, N.D., Walker, N.J. and Devereux, T.R. 2007. The putative tumor suppressor TSC-22 is downregulated early in chemically induced hepatocarcinogenesis and may be a suppressor of GADD 45 β . *Toxicol. Sci.* 99: 43-50.

CHROMOSOMAL LOCATION

Genetic locus: LZTS2 (human) mapping to 10q24.31; Lzts2 (mouse) mapping to 19 C3.

SOURCE

LAPSER1 (H-98) is a rabbit polyclonal antibody raised against amino acids 459-556 mapping near the C-terminus of LAPSER1 of human origin.

PRODUCT

Each vial contains 200 μ g IgG in 1.0 ml of PBS with < 0.1% sodium azide and 0.1% gelatin.

STORAGE

Store at 4° C, ****DO NOT FREEZE****. Stable for one year from the date of shipment. Non-hazardous. No MSDS required.

PROTOCOLS

See our web site at www.scbt.com or our catalog for detailed protocols and support products.

APPLICATIONS

LAPSER1 (H-98) is recommended for detection of LAPSER1 of mouse, rat and human origin by Western Blotting (starting dilution 1:200, dilution range 1:100-1:1000), immunoprecipitation [1-2 μ g per 100-500 μ g of total protein (1 ml of cell lysate)], immunofluorescence (starting dilution 1:50, dilution range 1:50-1:500) and solid phase ELISA (starting dilution 1:30, dilution range 1:30-1:3000).

LAPSER1 (H-98) is also recommended for detection of LAPSER1 in additional species, including equine, canine and bovine.

Suitable for use as control antibody for LAPSER1 siRNA (h): sc-62541, LAPSER1 siRNA (m): sc-62542, LAPSER1 shRNA Plasmid (h): sc-62541-SH, LAPSER1 shRNA Plasmid (m): sc-62542-SH, LAPSER1 shRNA (h) Lentiviral Particles: sc-62541-V and LAPSER1 shRNA (m) Lentiviral Particles: sc-62542-V.

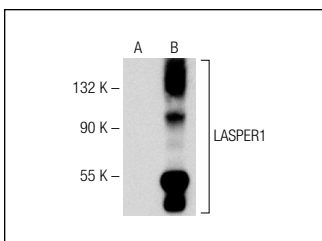
Molecular Weight of LAPSER1: 73 kDa.

Positive Controls: LAPSER1 (h): 293T Lysate: sc-116591.

RECOMMENDED SECONDARY REAGENTS

To ensure optimal results, the following support (secondary) reagents are recommended: 1) Western Blotting: use goat anti-rabbit IgG-HRP: sc-2004 (dilution range: 1:2000-1:100,000) or Cruz Marker™ compatible goat anti-rabbit IgG-HRP: sc-2030 (dilution range: 1:2000-1:5000), Cruz Marker™ Molecular Weight Standards: sc-2035, TBS Blotto A Blocking Reagent: sc-2333 and Western Blotting Luminol Reagent: sc-2048. 2) Immunoprecipitation: use Protein A/G PLUS-Agarose: sc-2003 (0.5 ml agarose/2.0 ml). 3) Immunofluorescence: use goat anti-rabbit IgG-FITC: sc-2012 (dilution range: 1:100-1:400) or goat anti-rabbit IgG-TR: sc-2780 (dilution range: 1:100-1:400) with UltraCruz™ Mounting Medium: sc-24941.

DATA



LAPSER1 (H-98): sc-134971. Western blot analysis of LAPSER1 expression in non-transfected: sc-117752 (A) and human LAPSER1 transfected: sc-116591 (B) 293T whole cell lysates.

RESEARCH USE

For research use only, not for use in diagnostic procedures.

MONOS
Satisfaction
Guaranteed

Try **LAPSER1 (D-7): sc-514618** or **LAPSER1 (B-5): sc-271958**, our highly recommended monoclonal alternatives to LAPSER1 (H-98).