

Bystin (H-300): sc-134978

BACKGROUND

Bystin (or Bystin-like) is an evolutionarily conserved protein from yeast to humans. It localizes to the nucleolus and cytoplasm. Nuclear Bystin associates with the 40S ribosomal subunit and cytoplasmic Bystin directly binds Trophinin and Tastin, facilitating the adhesion of cells expressing these proteins. Knock-down of Bystin inhibits cell proliferation and delays RNA processing of the 18S component of the 40S ribosomal subunit. This suggests that Bystin plays an important role in ribosome biogenesis. In addition, embryo development is arrested around the 16-cell stage when Bystin expression is knocked down. This implies that Bystin is important for the development of preimplantation embryos. Bystin is also overexpressed in human cancers providing further evidence suggesting that it participates in cell proliferation.

REFERENCES

1. Fukuda, M.N. and Nozawa, S. 2000. Trophinin, Tastin, and Bystin: a complex mediating unique attachment between trophoblastic and endometrial epithelial cells at their respective apical cell membranes. *Semin. Reprod. Endocrinol.* 17: 229-234.
2. Aoki, R. and Fukuda, M.N. 2001. Recent molecular approaches to elucidate the mechanism of embryo implantation: Trophinin, Bystin, and Tastin as molecules involved in the initial attachment of blastocysts to the uterus in humans. *Semin. Reprod. Med.* 18: 265-271.
3. Sheng, J., Yang, S., Xu, L., Wu, C., Wu, X., Li, A., Yu, Y., Ni, H., Fukuda, M. and Zhou, J. 2004. Bystin as a novel marker for reactive astrocytes in the adult rat brain following injury. *Eur. J. Neurosci.* 20: 873-884.
4. Aoki, R., Suzuki, N., Paria, B.C., Sugihara, K., Akama, T.O., Raab, G., Miyoshi, M., Nadano, D. and Fukuda, M.N. 2006. The Bysl gene product, Bystin, is essential for survival of mouse embryos. *FEBS Lett.* 580: 6062-6068.
5. Ma, L., Yin, M., Wu, X., Wu, C., Yang, S., Sheng, J., Ni, H., Fukuda, M.N. and Zhou, J. 2006. Expression of Trophinin and Bystin identifies distinct cell types in the germinal zones of adult rat brain. *Eur. J. Neurosci.* 23: 2265-2276.
6. Ayala, G.E., Dai, H., Li, R., Ittmann, M., Thompson, T.C., Rowley, D. and Wheeler, T.M. 2006. Bystin in perineural invasion of prostate cancer. *Prostate* 66: 266-272.
7. Miyoshi, M., Okajima, T., Matsuda, T., Fukuda, M.N. and Nadano, D. 2007. Bystin in human cancer cells: intracellular localization and function in ribosome biogenesis. *Biochem. J.* 404: 373-381.
8. Adachi, K., Soeta-Saneyoshi, C., Sagara, H. and Iwakura, Y. 2007. Crucial role of Bysl in mammalian preimplantation development as an integral factor for 40S ribosome biogenesis. *Mol. Cell. Biol.* 27: 2202-2214.

CHROMOSOMAL LOCATION

Genetic locus: BYSL (human) mapping to 6p21.1; Bysl (mouse) mapping to 17 C.

RESEARCH USE

For research use only, not for use in diagnostic procedures.

SOURCE

Bystin (H-300) is a rabbit polyclonal antibody raised against amino acids 138-437 mapping at the C-terminus of Bystin of human origin.

PRODUCT

Each vial contains 200 µg IgG in 1.0 ml of PBS with < 0.1% sodium azide and 0.1% gelatin.

APPLICATIONS

Bystin (H-300) is recommended for detection of Bystin of mouse, rat and human origin by Western Blotting (starting dilution 1:200, dilution range 1:100-1:1000), immunoprecipitation [1-2 µg per 100-500 µg of total protein (1 ml of cell lysate)], immunofluorescence (starting dilution 1:50, dilution range 1:50-1:500) and solid phase ELISA (starting dilution 1:30, dilution range 1:30-1:3000).

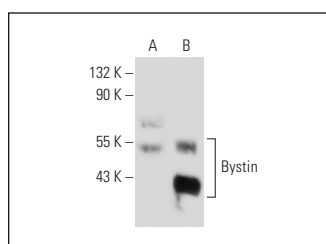
Bystin (H-300) is also recommended for detection of Bystin in additional species, including equine, canine, bovine and porcine.

Suitable for use as control antibody for Bystin siRNA (h): sc-62030, Bystin siRNA (m): sc-62031, Bystin shRNA Plasmid (h): sc-62030-SH, Bystin shRNA Plasmid (m): sc-62031-SH, Bystin shRNA (h) Lentiviral Particles: sc-62030-V and Bystin shRNA (m) Lentiviral Particles: sc-62031-V.

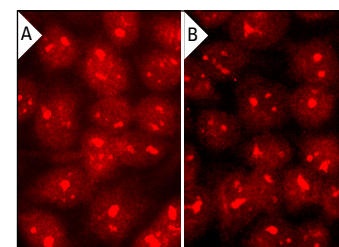
Molecular Weight of Bystin: 50 kDa.

Positive Controls: Bystin (h): 293T Lysate: sc-116274.

DATA



Bystin (H-300): sc-134978. Western blot analysis of Bystin expression in non-transfected: sc-117752 (A) and human Bystin transfected: sc-116274 (B) 293T whole cell lysates.



Bystin (H-300): sc-134978. Immunofluorescence staining of methanol-fixed HeLa cells showing nucleolar and cytoplasmic (A) and nucleolar and nuclear (B) localization.

STORAGE

Store at 4° C, ****DO NOT FREEZE****. Stable for one year from the date of shipment. Non-hazardous. No MSDS required.

PROTOCOLS

See our web site at www.scbt.com or our catalog for detailed protocols and support products.