

DAAM1 (H-55): sc-135024

BACKGROUND

DAAM1 (dishevelled associated activator of morphogenesis 1) is a 1,078 amino acid member of the formin homology protein family. Localized to the perinuclear cytoplasm and expressed throughout the body, DAAM1 binds to dishevelled (Dvl) and Rho and mediates the Wnt-induced formation of the Dvl-Rho complex. Once complexed to Dvl, Rho becomes activated and can regulate cell polarity, movement and cytoskeletal architecture. Activation of Rho is dependent upon formation of the Dvl-Rho complex. This suggests that DAAM1 (which is required for complex formation) is a critical component of cellular cortex functions. DAAM1 contains several binding domains which allow it to interact with various proteins such as CIP4, FBNP1 and spectrin, thereby helping to coordinate the dynamics of the Actin filament system. Additionally, DAAM1 is thought to act as a scaffolding protein by recruiting Rho-GEF and Rho-GDP, thus enhancing Rho-GTP formation. Three distinct isoforms exist due to alternative splicing events.

CHROMOSOMAL LOCATION

Genetic locus: DAAM1 (human) mapping to 14q23.1; Daam1 (mouse) mapping to 12 C3.

SOURCE

DAAM1 (H-55) is a rabbit polyclonal antibody raised against amino acids 6-60 mapping near the N-terminus of DAAM1 of human origin.

PRODUCT

Each vial contains 200 µg IgG in 1.0 ml of PBS with < 0.1% sodium azide and 0.1% gelatin.

STORAGE

Store at 4° C, ****DO NOT FREEZE****. Stable for one year from the date of shipment. Non-hazardous. No MSDS required.

APPLICATIONS

DAAM1 (H-55) is recommended for detection of DAAM1 of mouse, rat and human origin by Western Blotting (starting dilution 1:200, dilution range 1:100-1:1000), immunoprecipitation [1-2 µg per 100-500 µg of total protein (1 ml of cell lysate)], immunofluorescence (starting dilution 1:50, dilution range 1:50-1:500) and solid phase ELISA (starting dilution 1:30, dilution range 1:30-1:3000).

DAAM1 (H-55) is also recommended for detection of DAAM1 in additional species, including equine, canine, bovine, porcine and avian.

Suitable for use as control antibody for DAAM1 siRNA (h): sc-62190, DAAM1 siRNA (m): sc-62191, DAAM1 shRNA Plasmid (h): sc-62190-SH, DAAM1 shRNA Plasmid (m): sc-62191-SH, DAAM1 shRNA (h) Lentiviral Particles: sc-62190-V and DAAM1 shRNA (m) Lentiviral Particles: sc-62191-V.

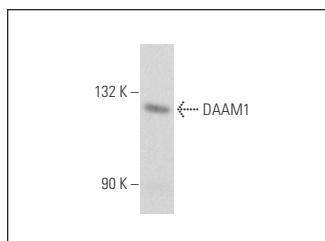
Molecular Weight of DAAM1: 123 kDa.

Positive Controls: HeLa whole cell lysate: sc-2200 or A-431 whole cell lysate: sc-2201.

RECOMMENDED SECONDARY REAGENTS

To ensure optimal results, the following support (secondary) reagents are recommended: 1) Western Blotting: use goat anti-rabbit IgG-HRP: sc-2004 (dilution range: 1:2000-1:100,000) or Cruz Marker™ compatible goat anti-rabbit IgG-HRP: sc-2030 (dilution range: 1:2000-1:5000), Cruz Marker™ Molecular Weight Standards: sc-2035, TBS Blotto A Blocking Reagent: sc-2333 and Western Blotting Luminol Reagent: sc-2048. 2) Immunoprecipitation: use Protein A/G PLUS-Agarose: sc-2003 (0.5 ml agarose/2.0 ml). 3) Immunofluorescence: use goat anti-rabbit IgG-FITC: sc-2012 (dilution range: 1:100-1:400) or goat anti-rabbit IgG-TR: sc-2780 (dilution range: 1:100-1:400) with UltraCruz™ Mounting Medium: sc-24941.

DATA



DAAM1 (H-55): 135024. Western blot analysis of DAAM1 expression in HeLa whole cell lysate.

SELECT PRODUCT CITATIONS

- Zhu, Y., et al. 2012. Dvl2-dependent activation of Daam1 and RhoA regulates Wnt5a-induced breast cancer cell migration. *PLoS ONE* 7: e37823.

RESEARCH USE

For research use only, not for use in diagnostic procedures.

PROTOCOLS

See our web site at www.scbt.com or our catalog for detailed protocols and support products.


 MONOS
Satisfaction
Guaranteed

Try **DAAM1 (WW-3): sc-100942**, our highly recommended monoclonal alternative to DAAM1 (H-55).