

L-Selectin (lam1-116): sc-13505

BACKGROUND

Selectins, also designated CD62 antigens, comprise a family of carbohydrate-binding proteins involved in mediating cellular interactions with leukocytes. L-Selectin (also designated LECAM-1 or CD62L) is expressed on the majority of B and naive T cells and on most monocytes, neutrophils and eosinophils. L-Selectin interacts with specific carbohydrates expressed by activated endothelial cells. P-Selectin (also designated GMP-140 or CD62P), expressed on activated platelets and endothelial cells, and E-Selectin (also designated ELMA-1 or CD62E), expressed on endothelial cells, exhibit overlapping ligand specificities. Both recognize sialyl-Le^x as a ligand and bind to specific carbohydrates on neutrophils and monocytes.

CHROMOSOMAL LOCATION

Genetic locus: SELL (human) mapping to 1q24.2; Sell (mouse) mapping to 1 H2.2.

SOURCE

L-Selectin (lam1-116) is a mouse monoclonal antibody raised against the lectin domain of L-Selectin of mouse origin.

PRODUCT

Each vial contains 200 µg IgG_{2a} kappa light chain in 1.0 ml of PBS with < 0.1% sodium azide and 0.1% gelatin.

L-Selectin (lam1-116) is available conjugated to agarose (sc-13505 AC), 500 µg/0.25 ml agarose in 1 ml, for IP; to HRP (sc-13505 HRP), 200 µg/ml, for WB, IHC(P) and ELISA; to either phycoerythrin (sc-13505 PE), fluorescein (sc-13505 FITC), Alexa Fluor[®] 488 (sc-13505 AF488), Alexa Fluor[®] 546 (sc-13505 AF546), Alexa Fluor[®] 594 (sc-13505 AF594) or Alexa Fluor[®] 647 (sc-13505 AF647), 200 µg/ml, for WB (RGB), IF, IHC(P) and FCM; and to either Alexa Fluor[®] 680 (sc-13505 AF680) or Alexa Fluor[®] 790 (sc-13505 AF790), 200 µg/ml, for Near-Infrared (NIR) WB, IF and FCM.

Alexa Fluor[®] is a trademark of Molecular Probes, Inc., Oregon, USA

RESEARCH USE

For research use only, not for use in diagnostic procedures.

APPLICATIONS

L-Selectin (lam1-116) is recommended for detection of L-Selectin of mouse, rat, human and guinea pig origin by Western Blotting (starting dilution 1:200, dilution range 1:100-1:1000), immunoprecipitation [1-2 µg per 100-500 µg of total protein (1 ml of cell lysate)], immunofluorescence (starting dilution 1:50, dilution range 1:50-1:500) and flow cytometry (1 µg per 1 x 10⁶ cells).

Suitable for use as control antibody for L-Selectin siRNA (h): sc-35770, L-Selectin siRNA (m): sc-35771, L-Selectin shRNA Plasmid (h): sc-35770-SH, L-Selectin shRNA Plasmid (m): sc-35771-SH, L-Selectin shRNA (h) Lentiviral Particles: sc-35770-V and L-Selectin shRNA (m) Lentiviral Particles: sc-35771-V.

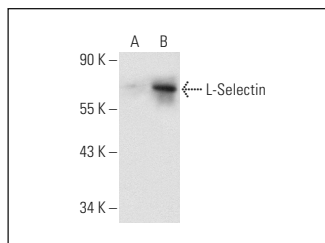
Molecular Weight of L-Selectin: 81 kDa.

Positive Controls: L-Selectin (h2): 293T Lysate: sc-159503 or Jurkat whole cell lysate: sc-2204.

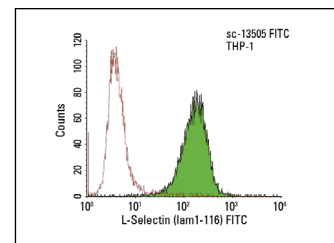
RECOMMENDED SUPPORT REAGENTS

To ensure optimal results, the following support reagents are recommended: 1) Western Blotting: use m-IgGκ BP-HRP: sc-516102 or m-IgGκ BP-HRP (Cruz Marker): sc-516102-CM (dilution range: 1:1000-1:10000), Cruz Marker[™] Molecular Weight Standards: sc-2035, UltraCruz[®] Blocking Reagent: sc-516214 and Western Blotting Luminol Reagent: sc-2048. 2) Immunoprecipitation: use Protein A/G PLUS-Agarose: sc-2003 (0.5 ml agarose/2.0 ml). 3) Immunofluorescence: use m-IgGκ BP-FITC: sc-516140 or m-IgGκ BP-PE: sc-516141 (dilution range: 1:50-1:200) with UltraCruz[®] Mounting Medium: sc-24941 or UltraCruz[®] Hard-set Mounting Medium: sc-359850.

DATA



L-Selectin (lam1-116): sc-13505. Western blot analysis of L-Selectin expression in non-transfected: sc-117752 (A) and human L-Selectin transfected: sc-159503 (B) 293T whole cell lysates.



L-Selectin (lam1-116) FITC: sc-13505 FITC. FCM analysis of THP-1 cells. Black line histogram represents the isotype control, normal mouse IgG_{2a}-FITC: sc-2856.

SELECT PRODUCT CITATIONS

- Zhang, J.Z., et al. 2003. L-Selectin and E-Selectin expressed on monocytes mediating *Ehrlichia chaffeensis* attachment onto host cells. FEMS Microbiol. Lett. 227: 303-309.
- Odagiri, K., et al. 2007. Immunohistochemical study of osteopontin and L-Selectin in a rat endometriosis model and in human endometriosis. Fertil. Steril. 88: 1207-1211.
- Tran, E.D., et al. 2007. An *in vivo* analysis of capillary stasis and endothelial apoptosis in a model of hypertension. Microcirculation 14: 793-804.
- Zhao, Z., et al. 2009. Lactosyl derivatives function in a rat model of severe burn shock by acting as antagonists against CD11β of integrin on leukocytes. Glycoconj. J. 26: 173-188.
- Lin, W.L., et al. 2017. Monocytic thrombomodulin promotes cell adhesion through interacting with its ligand, Lewis^x. Immunol. Cell Biol. 95: 372-379.
- Dib, K., et al. 2017. The cytoplasmic tail of L-Selectin interacts with the adaptor-protein complex AP-1 subunit μ1A via a novel basic binding motif. J. Biol. Chem. 292: 6703-6714.
- Silva, M., et al. 2017. Cell-specific variation in E-Selectin ligand expression among human peripheral blood mononuclear cells: implications for immunosurveillance and pathobiology. J. Immunol. 198: 3576-3587.

STORAGE

Store at 4° C, **DO NOT FREEZE**. Stable for one year from the date of shipment. Non-hazardous. No MSDS required.