

FAM120B (H-274): sc-135123

BACKGROUND

Making up nearly 6% of the human genome, chromosome 6 contains around 1,200 genes within 170 million base pairs of sequence. Deletion of a portion of the q arm of chromosome 6 is associated with early onset intestinal cancer suggesting the presence of a cancer susceptibility locus. Porphyria cutanea tarda is associated with chromosome 6 through the HFE gene which, when mutated, predisposes an individual to developing this porphyria. Notably, the PARK2 gene, which is associated with Parkinson's disease, and the genes encoding the major histocompatibility complex proteins, which are key molecular components of the immune system and determine predisposition to rheumatic diseases, are also located on chromosome 6. Stickler syndrome, 21-hydroxylase deficiency and maple syrup urine disease are also associated with genes on chromosome 6. A bipolar disorder susceptibility locus has been identified on the q arm of chromosome 6. The FAM120B gene product has been provisionally designated FAM120B pending further characterization.

REFERENCES

- Mungall, A.J., et al. 2003. The DNA sequence and analysis of human chromosome 6. *Nature* 425: 805-811.
- Vuoristo, M.M., et al. 2004. A stop codon mutation in COL11A2 induces exon skipping and leads to non-ocular Stickler syndrome. *Am. J. Med. Genet. A* 130: 160-164.
- McQueen, M.B., et al. 2005. Combined analysis from eleven linkage studies of bipolar disorder provides strong evidence of susceptibility loci on chromosomes 6q and 8q. *Am. J. Hum. Genet.* 77: 582-595.
- Batts, K.P. 2007. Iron overload syndromes and the liver. *Mod. Pathol.* 20: S31-S39.
- Olsson, K.S., et al. 2007. The HLA-A1-B8 haplotype hitchhiking with the hemochromatosis mutation: does it affect the phenotype? *Eur. J. Haematol.* 79: 429-434.
- Park, E., et al. 2007. Modulation of parkin gene expression in noradrenergic neuronal cells. *Int. J. Dev. Neurosci.* 25: 491-497.

CHROMOSOMAL LOCATION

Genetic locus: FAM120B (human) mapping to 6q27; Fam120b (mouse) mapping to 17 A2.

SOURCE

FAM120B (H-274) is a rabbit polyclonal antibody raised against amino acids 46-319 mapping near the N-terminus of FAM120B of human origin.

PRODUCT

Each vial contains 200 µg IgG in 1.0 ml of PBS with < 0.1% sodium azide and 0.1% gelatin.

STORAGE

Store at 4° C, ****DO NOT FREEZE****. Stable for one year from the date of shipment. Non-hazardous. No MSDS required.

APPLICATIONS

FAM120B (H-274) is recommended for detection of FAM120B of mouse, rat and human origin by Western Blotting (starting dilution 1:200, dilution range 1:100-1:1000), immunoprecipitation [1-2 µg per 100-500 µg of total protein (1 ml of cell lysate)], immunofluorescence (starting dilution 1:50, dilution range 1:50-1:500) and solid phase ELISA (starting dilution 1:30, dilution range 1:30-1:3000).

FAM120B (H-274) is also recommended for detection of FAM120B in additional species, including equine, canine, bovine and porcine.

Suitable for use as control antibody for FAM120B siRNA (h): sc-95366, FAM120B siRNA (m): sc-140257, FAM120B shRNA Plasmid (h): sc-95366-SH, FAM120B shRNA Plasmid (m): sc-140257-SH, FAM120B shRNA (h) Lentiviral Particles: sc-95366-V and FAM120B shRNA (m) Lentiviral Particles: sc-140257-V.

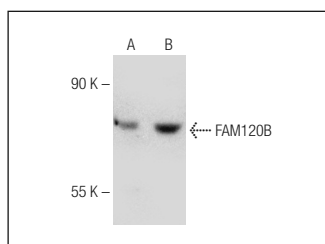
Molecular Weight of FAM120B isoforms: 104/87 kDa.

Positive Controls: K-562 whole cell lysate: sc-2203 or HeLa whole cell lysate: sc-2200.

RECOMMENDED SECONDARY REAGENTS

To ensure optimal results, the following support (secondary) reagents are recommended: 1) Western Blotting: use goat anti-rabbit IgG-HRP: sc-2004 (dilution range: 1:2000-1:100,000) or Cruz Marker™ compatible goat anti-rabbit IgG-HRP: sc-2030 (dilution range: 1:2000-1:5000), Cruz Marker™ Molecular Weight Standards: sc-2035, TBS Blotto A Blocking Reagent: sc-2333 and Western Blotting Luminol Reagent: sc-2048. 2) Immunoprecipitation: use Protein A/G PLUS-Agarose: sc-2003 (0.5 ml agarose/2.0 ml). 3) Immunofluorescence: use goat anti-rabbit IgG-FITC: sc-2012 (dilution range: 1:100-1:400) or goat anti-rabbit IgG-TR: sc-2780 (dilution range: 1:100-1:400) with UltraCruz™ Mounting Medium: sc-24941.

DATA



FAM120B (H-274): sc-135123. Western blot analysis of FAM120B expression in HeLa (A) and K-562 (B) whole cell lysates.

RESEARCH USE

For research use only, not for use in diagnostic procedures.

PROTOCOLS

See our web site at www.scbt.com or our catalog for detailed protocols and support products.