

HAPLN3 (H-45): sc-135193

BACKGROUND

HAPLN3 (hyaluronan and proteoglycan link protein 3) is a 360 amino acid protein encoded by the human gene HAPLN3. HAPLN3 belongs to the HAPLN family and contains one Ig-like V-type (immunoglobulin-like) domain and two link domains. HAPLN3 mediates the binding of complexes containing hyaluronic acid. It may play a pivotal role in the formation of the hyaluronan-associated matrix in the central nervous system (CNS), which facilitates neuronal conduction and general structural stabilization. HAPLN3 may also be involved in the formation of extracellular matrices contributing to perineuronal nets and facilitate the understanding of a functional role of these extracellular matrices. HAPLN3 is widely expressed, with highest levels in spleen and placenta.

REFERENCES

1. Evanko, S.P., et al. 1999. Formation of hyaluronan- and versican-rich pericellular matrix is required for proliferation and migration of vascular smooth muscle cells. *Arterioscler. Thromb. Vasc. Biol.* 19: 1004-1013.
2. Clark, H.F., et al. 2003. The secreted protein discovery initiative (SPDI), a large-scale effort to identify novel human secreted and transmembrane proteins: a bioinformatics assessment. *Genome Res.* 13: 2265-2270.

CHROMOSOMAL LOCATION

Genetic locus: HAPLN3 (human) mapping to 15q26.1; Hapln3 (mouse) mapping to 7 D3.

SOURCE

HAPLN3 (H-45) is a rabbit polyclonal antibody raised against amino acids 74-118 mapping within an internal region of HAPLN3 of human origin.

PRODUCT

Each vial contains 200 µg IgG in 1.0 ml of PBS with < 0.1% sodium azide and 0.1% gelatin.

APPLICATIONS

HAPLN3 (H-45) is recommended for detection of HAPLN3 of mouse, rat and human origin by Western Blotting (starting dilution 1:200, dilution range 1:100-1:1000), immunoprecipitation [1-2 µg per 100-500 µg of total protein (1 ml of cell lysate)], immunofluorescence (starting dilution 1:50, dilution range 1:50-1:500) and solid phase ELISA (starting dilution 1:30, dilution range 1:30-1:3000).

HAPLN3 (H-45) is also recommended for detection of HAPLN3 in additional species, including porcine.

Suitable for use as control antibody for HAPLN3 siRNA (h): sc-62439, HAPLN3 siRNA (m): sc-62440, HAPLN3 shRNA Plasmid (h): sc-62439-SH, HAPLN3 shRNA Plasmid (m): sc-62440-SH, HAPLN3 shRNA (h) Lentiviral Particles: sc-62439-V and HAPLN3 shRNA (m) Lentiviral Particles: sc-62440-V.

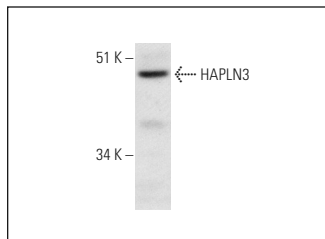
Molecular Weight of HAPLN3: 41 kDa.

Positive Controls: HeLa whole cell lysate: sc-2200.

RECOMMENDED SECONDARY REAGENTS

To ensure optimal results, the following support (secondary) reagents are recommended: 1) Western Blotting: use goat anti-rabbit IgG-HRP: sc-2004 (dilution range: 1:2000-1:100,000) or Cruz Marker™ compatible goat anti-rabbit IgG-HRP: sc-2030 (dilution range: 1:2000-1:5000), Cruz Marker™ Molecular Weight Standards: sc-2035, TBS Blotto A Blocking Reagent: sc-2333 and Western Blotting Luminol Reagent: sc-2048. 2) Immunoprecipitation: use Protein A/G PLUS-Agarose: sc-2003 (0.5 ml agarose/2.0 ml). 3) Immunofluorescence: use goat anti-rabbit IgG-FITC: sc-2012 (dilution range: 1:100-1:400) or goat anti-rabbit IgG-TR: sc-2780 (dilution range: 1:100-1:400) with UltraCruz™ Mounting Medium: sc-24941.

DATA



HAPLN3 (H-45): sc-135193. Western blot analysis of HAPLN3 expression in HeLa whole cell lysate.

STORAGE

Store at 4° C, **DO NOT FREEZE**. Stable for one year from the date of shipment. Non-hazardous. No MSDS required.

RESEARCH USE

For research use only, not for use in diagnostic procedures.

PROTOCOLS

See our web site at www.scbt.com or our catalog for detailed protocols and support products.

MONOS
Satisfaction
Guaranteed

Try **HAPLN3 (F-3): sc-377480** or **HAPLN3 (A-3): sc-390390**, our highly recommended monoclonal alternatives to HAPLN3 (H-45).