

Annexin A10 (H-58): sc-135234

BACKGROUND

The annexin family of calcium-binding proteins contains several family members that are characterized by a conserved core domain which binds phospholipids in a Ca²⁺-dependent manner, and a unique amino-terminal region which may confer binding specificity. Annexin family members have been implicated as regulators of such diverse processes as ion flux, endocytosis, exocytosis and cellular adhesion. Annexin A10, also known as ANX14 or ANXA10, is a 324 amino acid protein that contains 4 annexin domains and may be involved in the regulation of cellular growth and signal transduction pathways throughout the cell. The gene encoding Annexin A10 maps to human chromosome 4, which encodes nearly 6% of the human genome and has the largest gene deserts (regions of the genome with no protein encoding genes) of all of the human chromosomes.

REFERENCES

1. Smith, P.D. and Moss, S.E. 1994. Structural evolution of the annexin supergene family. *Trends Genet.* 10: 241-246.
2. Morgan, R.O. and Fernández, M.P. 1997. Annexin gene structures and molecular evolutionary genetics. *Cell. Mol. Life Sci.* 53: 508-515.
3. Morgan, R.O., et al. 1999. Novel human and mouse Annexin A10 are linked to the genome duplications during early chordate evolution. *Genomics* 60: 40-49.
4. Liu, S.H., et al. 2002. Downregulation of Annexin A10 in hepatocellular carcinoma is associated with vascular invasion, early recurrence, and poor prognosis in synergy with p53 mutation. *Am. J. Pathol.* 160: 1831-1837.
5. Online Mendelian Inheritance in Man, OMIM[™]. 2003. Johns Hopkins University, Baltimore, MD. MIM Number: 608008. World Wide Web URL: <http://www.ncbi.nlm.nih.gov/omim/>

CHROMOSOMAL LOCATION

Genetic locus: ANXA10 (human) mapping to 4q32.3; Anxa10 (mouse) mapping to 8 B3.1.

SOURCE

Annexin A10 (H-58) is a rabbit polyclonal antibody raised against amino acids 147-204 mapping within an internal region of Annexin A10 of human origin.

PRODUCT

Each vial contains 200 µg IgG in 1.0 ml of PBS with < 0.1% sodium azide and 0.1% gelatin.

STORAGE

Store at 4° C, ****DO NOT FREEZE****. Stable for one year from the date of shipment. Non-hazardous. No MSDS required.

PROTOCOLS

See our web site at www.scbt.com or our catalog for detailed protocols and support products.

APPLICATIONS

Annexin A10 (H-58) is recommended for detection of Annexin A10 of mouse, rat and human origin by Western Blotting (starting dilution 1:200, dilution range 1:100-1:1000), immunoprecipitation [1-2 µg per 100-500 µg of total protein (1 ml of cell lysate)], immunofluorescence (starting dilution 1:50, dilution range 1:50-1:500) and solid phase ELISA (starting dilution 1:30, dilution range 1:30-1:3000).

Annexin A10 (H-58) is also recommended for detection of Annexin A10 in additional species, including equine, canine, porcine and avian.

Suitable for use as control antibody for Annexin A10 siRNA (h): sc-72503, Annexin A10 siRNA (m): sc-72504, Annexin A10 shRNA Plasmid (h): sc-72503-SH, Annexin A10 shRNA Plasmid (m): sc-72504-SH, Annexin A10 shRNA (h) Lentiviral Particles: sc-72503-V and Annexin A10 shRNA (m) Lentiviral Particles: sc-72504-V.

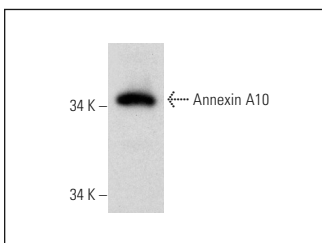
Molecular Weight of Annexin A10: 37 kDa.

Positive Controls: RT-4 whole cell lysate: sc-364257.

RECOMMENDED SECONDARY REAGENTS

To ensure optimal results, the following support (secondary) reagents are recommended: 1) Western Blotting: use goat anti-rabbit IgG-HRP: sc-2004 (dilution range: 1:2000-1:100,000) or Cruz Marker[™] compatible goat anti-rabbit IgG-HRP: sc-2030 (dilution range: 1:2000-1:5000), Cruz Marker[™] Molecular Weight Standards: sc-2035, TBS Blotto A Blocking Reagent: sc-2333 and Western Blotting Luminol Reagent: sc-2048. 2) Immunoprecipitation: use Protein A/G PLUS-Agarose: sc-2003 (0.5 ml agarose/2.0 ml). 3) Immunofluorescence: use goat anti-rabbit IgG-FITC: sc-2012 (dilution range: 1:100-1:400) or goat anti-rabbit IgG-TR: sc-2780 (dilution range: 1:100-1:400) with UltraCruz[™] Mounting Medium: sc-24941.

DATA



Annexin A10 (H-58): sc-135234. Western blot analysis of Annexin A10 expression in RT-4 whole cell lysate.

RESEARCH USE

For research use only, not for use in diagnostic procedures.

MONOS
Satisfaction
Guaranteed

Try **Annexin A10 (E-11): sc-398736** or **Annexin A10 (5-RE28): sc-134259**, our highly recommended monoclonal alternatives to Annexin A10 (H-58).