

LLGL2 (H-58): sc-135289

BACKGROUND

LLGL2 (lethal giant larvae homolog 2), also referred to as HGL or LGL2, is a cortical cytoskeleton protein that is a part of a larger complex of proteins. The complex, which consists of LGN, PKC ι and PAR-6 β , may play a role in ensuring the correct organization and orientation of bipolar spindles for normal cell division and for the initial phase of the establishment of epithelial cell polarity. In *Drosophila melanogaster*, LLGL2 is required in follicle cells for the differentiation of both stalk cells and posterior follicle cells. In humans, LLGL2 may be involved in cell proliferation control and tumorigenesis. Phosphorylation of LLGL2 is induced during cell polarization and may contribute to the segregation of LLGL2 from the PKC ι and PAR-6 β complex. Overexpression of LLGL2 is thought to inhibit tight junction formation in cells. LLGL2 is expressed in the cytoplasm and localizes to the perinuclear structure of the cell.

CHROMOSOMAL LOCATION

Genetic locus: LLGL2 (human) mapping to 17q25.1; Llgl2 (mouse) mapping to 11 E2.

SOURCE

LLGL2 (H-58) is a rabbit polyclonal antibody raised against amino acids 148-205 mapping within an internal region of LLGL2 of human origin.

PRODUCT

Each vial contains 200 μ g IgG in 1.0 ml of PBS with < 0.1% sodium azide and 0.1% gelatin.

STORAGE

Store at 4° C, ****DO NOT FREEZE****. Stable for one year from the date of shipment. Non-hazardous. No MSDS required.

APPLICATIONS

LLGL2 (H-58) is recommended for detection of LLGL2 of mouse, rat and human origin by Western Blotting (starting dilution 1:200, dilution range 1:100-1:1000), immunoprecipitation [1-2 μ g per 100-500 μ g of total protein (1 ml of cell lysate)], immunofluorescence (starting dilution 1:50, dilution range 1:50-1:500), immunohistochemistry (including paraffin-embedded sections) (starting dilution 1:50, dilution range 1:50-1:500) and solid phase ELISA (starting dilution 1:30, dilution range 1:30-1:3000).

LLGL2 (H-58) is also recommended for detection of LLGL2 in additional species, including canine, bovine and porcine.

Suitable for use as control antibody for LLGL2 siRNA (h): sc-93661, LLGL2 siRNA (m): sc-146759, LLGL2 shRNA Plasmid (h): sc-93661-SH, LLGL2 shRNA Plasmid (m): sc-146759-SH, LLGL2 shRNA (h) Lentiviral Particles: sc-93661-V and LLGL2 shRNA (m) Lentiviral Particles: sc-146759-V.

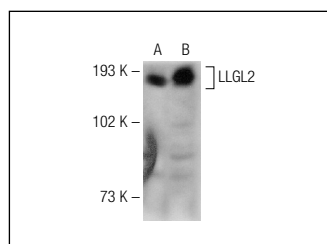
Molecular Weight of LLGL2: 113 kDa.

Positive Controls: ES-2 cell lysate: sc-24674, K-562 whole cell lysate: sc-2203 or HeLa whole cell lysate: sc-2200.

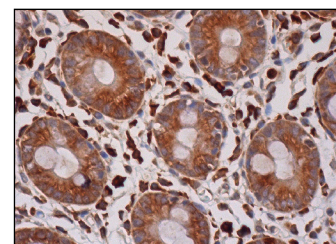
RECOMMENDED SECONDARY REAGENTS

To ensure optimal results, the following support (secondary) reagents are recommended: 1) Western Blotting: use goat anti-rabbit IgG-HRP: sc-2004 (dilution range: 1:2000-1:100,000) or Cruz Marker™ compatible goat anti-rabbit IgG-HRP: sc-2030 (dilution range: 1:2000-1:5000), Cruz Marker™ Molecular Weight Standards: sc-2035, TBS Blotto A Blocking Reagent: sc-2333 and Western Blotting Luminol Reagent: sc-2048. 2) Immunoprecipitation: use Protein A/G PLUS-Agarose: sc-2003 (0.5 ml agarose/2.0 ml). 3) Immunofluorescence: use goat anti-rabbit IgG-FITC: sc-2012 (dilution range: 1:100-1:400) or goat anti-rabbit IgG-TR: sc-2780 (dilution range: 1:100-1:400) with UltraCruz™ Mounting Medium: sc-24941. 4) Immunohistochemistry: use ImmunoCruz™: sc-2051 or ABC: sc-2018 rabbit IgG Staining Systems.

DATA



LLGL2 (H-58): sc-135289. Western blot analysis of LLGL2 expression in ES-2 (A) and K-562 (B) whole cell lysates.



LLGL2 (H-58): sc-135289. Immunoperoxidase staining of formalin fixed, paraffin-embedded human colon tissue showing cytoplasmic staining of glandular cells.

RESEARCH USE

For research use only, not for use in diagnostic procedures.

PROTOCOLS

See our web site at www.scbt.com or our catalog for detailed protocols and support products.


 MONOS
Satisfation
Guaranteed

Try **LLGL2 (A-4): sc-376857** or **LLGL2 (I-13): sc-101242**, our highly recommended monoclonal alternatives to LLGL2 (H-58).