

XAB1 (H-248): sc-135356

BACKGROUND

XAB1 (XPA binding protein 1), also known as MBDIN, NTPBP, ATPBD1A or HUSSY-23, is a 374 amino acid cytoplasmic protein that is involved in protein synthesis events. Expressed ubiquitously with highest expression in testis, XAB1 binds to the RNA polymerase II (Pol II)-associated proteins RPAP1-3 and to XPA (a protein involved in DNA repair mechanisms), thereby forming an interface with Pol II. Via this interaction, XAB1 is thought to mediate the involvement of Pol II in both protein complex formation and protein chaperone/scaffolding activities. In addition, XAB1 interacts with components of the integrator and molecular chaperone complexes, further implicating XAB1 in protein assembly. XAB1 contains a cluster of acidic amino acids in its C-terminal region and a series of sequences similar to those found in GTP-binding proteins in its N-terminal region, suggesting that XAB1 has possible GTPase activity.

CHROMOSOMAL LOCATION

Genetic locus: YRDC (human) mapping to 1p34.3; Yrdc (mouse) mapping to 4 D2.2.

SOURCE

XAB1 (H-248) is a rabbit polyclonal antibody raised against amino acids 127-374 mapping at the C-terminus of XAB1 of human origin.

PRODUCT

Each vial contains 200 µg IgG in 1.0 ml of PBS with < 0.1% sodium azide and 0.1% gelatin.

Available as TransCruz reagent for Gel Supershift and ChIP applications, sc-135356 X, 200 µg/0.1 ml.

APPLICATIONS

XAB1 (H-248) is recommended for detection of XAB1 of mouse, rat and human origin by Western Blotting (starting dilution 1:200, dilution range 1:100-1:1000), immunoprecipitation [1-2 µg per 100-500 µg of total protein (1 ml of cell lysate)], immunofluorescence (starting dilution 1:50, dilution range 1:50-1:500) and solid phase ELISA (starting dilution 1:30, dilution range 1:30-1:3000).

XAB1 (H-248) is also recommended for detection of XAB1 in additional species, including equine, canine, bovine and porcine.

Suitable for use as control antibody for XAB1 siRNA (h): sc-94614, XAB1 siRNA (m): sc-155370, XAB1 shRNA Plasmid (h): sc-94614-SH, XAB1 shRNA Plasmid (m): sc-155370-SH, XAB1 shRNA (h) Lentiviral Particles: sc-94614-V and XAB1 shRNA (m) Lentiviral Particles: sc-155370-V.

XAB1 (H-248) X TransCruz antibody is recommended for Gel Supershift and ChIP applications.

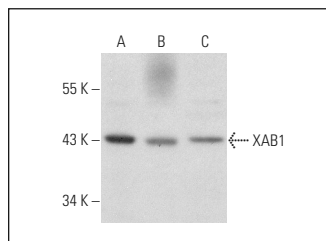
Molecular Weight of XAB1: 42 kDa.

Positive Controls: Ramos cell lysate: sc-2216, HL-60 whole cell lysate: sc-2209 or IMR-32 cell lysate: sc-2409.

RECOMMENDED SECONDARY REAGENTS

To ensure optimal results, the following support (secondary) reagents are recommended: 1) Western Blotting: use goat anti-rabbit IgG-HRP: sc-2004 (dilution range: 1:2000-1:100,000) or Cruz Marker™ compatible goat anti-rabbit IgG-HRP: sc-2030 (dilution range: 1:2000-1:5000), Cruz Marker™ Molecular Weight Standards: sc-2035, TBS Blotto A Blocking Reagent: sc-2333 and Western Blotting Luminol Reagent: sc-2048. 2) Immunoprecipitation: use Protein A/G PLUS-Agarose: sc-2003 (0.5 ml agarose/2.0 ml). 3) Immunofluorescence: use goat anti-rabbit IgG-FITC: sc-2012 (dilution range: 1:100-1:400) or goat anti-rabbit IgG-TR: sc-2780 (dilution range: 1:100-1:400) with UltraCruz™ Mounting Medium: sc-24941.

DATA



XAB1 (H-248): sc-135356. Western blot analysis of XAB1 expression in Ramos (A), HL-60 (B) and IMR-32 (C) whole cell lysates.

STORAGE

Store at 4° C, ****DO NOT FREEZE****. Stable for one year from the date of shipment. Non-hazardous. No MSDS required.

RESEARCH USE

For research use only, not for use in diagnostic procedures.

PROTOCOLS

See our web site at www.scbt.com or our catalog for detailed protocols and support products.



Try **XAB1 (B-4): sc-365865** or **XAB1 (A-10): sc-365866**, our highly recommended monoclonal alternatives to XAB1 (H-248).