

# Nulp1 (H-300): sc-135365

## BACKGROUND

Nulp1 (nuclear localized protein 1), also known as TCF25 (transcription factor 25 (basic helix-loop-helix)), Hulp1 or FKSG26, is a 676 amino acid protein that plays a role in cell death. A member of the TCF25 family, Nulp1 utilizes its C-terminus to mediate transcriptional repression of SRF *in vitro*, and interacts with XIAP. Nulp1 localizes primarily to the nucleus but is also found in cytosol. Widely expressed, Nulp1 is found at high levels in embryonic brain and adult heart. The gene encoding Nulp1 maps to human chromosome 16, which encodes over 900 genes and comprises nearly 3% of the human genome. The GAN gene is located on chromosome 16 and, with mutation, may lead to giant axonal neuropathy, a nervous system disorder characterized by increasing malfunction with growth. The rare disorder Rubinstein-Taybi syndrome is also associated with chromosome 16, as is Crohn's disease, which is a gastrointestinal inflammatory condition.

## REFERENCES

- Baraitser, M., et al. 1983. The Rubinstein-Taybi syndrome: occurrence in two sets of identical twins. *Clin. Genet.* 23: 318-320.
- Kikuno, R., et al. 1999. Prediction of the coding sequences of unidentified human genes. XIV. The complete sequences of 100 new cDNA clones from brain which code for large proteins *in vitro*. *DNA Res.* 6: 197-205.
- Bomont, P., et al. 2000. The gene encoding gigaxonin, a new member of the cytoskeletal BTB/kelch repeat family, is mutated in giant axonal neuropathy. *Nat. Genet.* 26: 370-374.
- Olsson, M., et al. 2002. Nulp1, a novel basic helix-loop-helix protein expressed broadly during early embryonic organogenesis and prominently in developing dorsal root ganglia. *Cell Tissue Res.* 308: 361-370.
- Cho, J.H. 2004. Advances in the genetics of inflammatory bowel disease. *Curr. Gastroenterol. Rep.* 6: 467-473.
- Mathew, C.G., et al. 2004. Genetics of inflammatory bowel disease: progress and prospects. *Hum. Mol. Genet.* 13 Spec. No. 1: R161-R168.

## CHROMOSOMAL LOCATION

Genetic locus: TCF25 (human) mapping to 16q24.3; Tcf25 (mouse) mapping to 8 E1.

## SOURCE

Nulp1 (H-300) is a rabbit polyclonal antibody raised against amino acids 1-300 mapping at the N-terminus of Nulp1 of human origin.

## PRODUCT

Each vial contains 200 µg IgG in 1.0 ml of PBS with < 0.1% sodium azide and 0.1% gelatin. Also available as TransCruz reagent for Gel Supershift and ChIP applications, sc-135365 X, 200 µg/0.1 ml.

## STORAGE

Store at 4° C, **\*\*DO NOT FREEZE\*\***. Stable for one year from the date of shipment. Non-hazardous. No MSDS required.

## APPLICATIONS

Nulp1 (H-300) is recommended for detection of Nulp1 of mouse, rat and human origin by Western Blotting (starting dilution 1:200, dilution range 1:100-1:1000), immunoprecipitation [1-2 µg per 100-500 µg of total protein (1 ml of cell lysate)], immunofluorescence (starting dilution 1:50, dilution range 1:50-1:500) and solid phase ELISA (starting dilution 1:30, dilution range 1:30-1:3000).

Suitable for use as control antibody for Nulp1 siRNA (h): sc-93467, Nulp1 siRNA (m): sc-150116, Nulp1 shRNA Plasmid (h): sc-93467-SH, Nulp1 shRNA Plasmid (m): sc-150116-SH, Nulp1 shRNA (h) Lentiviral Particles: sc-93467-V and Nulp1 shRNA (m) Lentiviral Particles: sc-150116-V.

Nulp1 (H-300) X TransCruz antibody is recommended for Gel Supershift and ChIP applications.

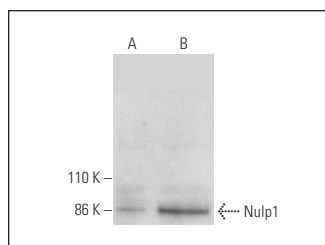
Molecular Weight of Nulp1: 77 kDa.

Positive Controls: Nulp1 (h): 293T Lysate: sc-369761.

## RECOMMENDED SECONDARY REAGENTS

To ensure optimal results, the following support (secondary) reagents are recommended: 1) Western Blotting: use goat anti-rabbit IgG-HRP: sc-2004 (dilution range: 1:2000-1:100,000) or Cruz Marker™ compatible goat anti-rabbit IgG-HRP: sc-2030 (dilution range: 1:2000-1:5000), Cruz Marker™ Molecular Weight Standards: sc-2035, TBS Blotto A Blocking Reagent: sc-2333 and Western Blotting Luminol Reagent: sc-2048. 2) Immunofluorescence: use goat anti-rabbit IgG-FITC: sc-2012 (dilution range: 1:100-1:400) or goat anti-rabbit IgG-TR: sc-2780 (dilution range: 1:100-1:400) with UltraCruz™ Mounting Medium: sc-24941.

## DATA



Nulp1 (H-300): sc-135365. Western blot analysis of Nulp1 expression in non-transfected: sc-117752 (A) and human Nulp1 transfected: sc-369761 (B) 293T whole cell lysates.

## RESEARCH USE

For research use only, not for use in diagnostic procedures.

**MONOS**  
Satisfaction  
Guaranteed

Try **Nulp1 (A-6): sc-514203**, our highly recommended monoclonal alternative to Nulp1 (H-300).