

CASZ1 (E-14): sc-135453

BACKGROUND

CASZ1 (castor zinc finger 1), also known as CST, SRG or ZNF693, is a 1,759 amino acid protein that localizes to the nucleus and contains 8 C₂H₂-type zinc fingers. Expressed in stomach, lung, testis, pancreas, heart, skeletal muscle and small intestine, CASZ1 exists as multiple alternatively spliced isoforms and is thought to function as a transcription factor. Human CASZ1 shares over 85% sequence homology with its mouse counterpart, suggesting a conserved role between species. The gene encoding CASZ1 maps to human chromosome 1, which spans 260 million base pairs, contains over 3,000 genes and comprises nearly 8% of the human genome. Chromosome 1 houses a large number of disease-associated genes, including those that are involved in familial adenomatous polyposis, Stickler syndrome, Parkinson's disease, Gaucher disease, schizophrenia and Usher syndrome. Aberrations in chromosome 1 are found in a variety of cancers, including head and neck cancer, malignant melanoma and multiple myeloma.

CHROMOSOMAL LOCATION

Genetic locus: CASZ1 (human) mapping to 1p36.22; Casz1 (mouse) mapping to 4 E2.

SOURCE

CASZ1 (E-14) is an affinity purified rabbit polyclonal antibody raised against a peptide mapping within an internal region of CASZ1 of human origin.

PRODUCT

Each vial contains 100 µg IgG in 1.0 ml of PBS with < 0.1% sodium azide and 0.1% gelatin. Also available as TransCruz reagent for Gel Supershift and ChIP applications, sc-135453 X, 200 µg/0.1 ml.

Blocking peptide available for competition studies, sc-135453 P, (100 µg peptide in 0.5 ml PBS containing < 0.1% sodium azide and 0.2% BSA).

APPLICATIONS

CASZ1 (E-14) is recommended for detection of CASZ1 isoforms 1 and 2 of mouse, rat and human origin by Western Blotting (starting dilution 1:100, dilution range 1:50-1:500), immunoprecipitation [1-2 µg per 100-500 µg of total protein (1 ml of cell lysate)], immunofluorescence (starting dilution 1:25, dilution range 1:25-1:250) and solid phase ELISA (starting dilution 1:30, dilution range 1:30-1:3000).

CASZ1 (E-14) is also recommended for detection of CASZ1 isoforms 1 and 2 in additional species, including equine, canine and porcine.

Suitable for use as control antibody for CASZ1 siRNA (h): sc-78956, CASZ1 siRNA (m): sc-142024, CASZ1 shRNA Plasmid (h): sc-78956-SH, CASZ1 shRNA Plasmid (m): sc-142024-SH, CASZ1 shRNA (h) Lentiviral Particles: sc-78956-V and CASZ1 shRNA (m) Lentiviral Particles: sc-142024-V.

CASZ1 (E-14) X TransCruz antibody is recommended for Gel Supershift and ChIP applications.

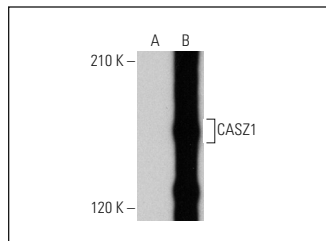
Molecular Weight of CASZ1: 190 kDa.

Positive Controls: SK-BR-3 cell lysate: sc-2218, CASZ1 (h): 293T Lysate: sc-116278 or MCF7 nuclear extract: sc-2149.

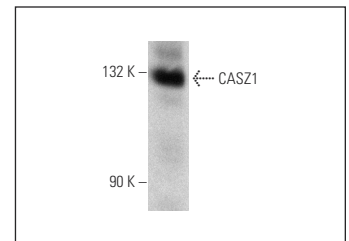
RECOMMENDED SECONDARY REAGENTS

To ensure optimal results, the following support (secondary) reagents are recommended: 1) Western Blotting: use goat anti-rabbit IgG-HRP: sc-2004 (dilution range: 1:2000-1:100,000) or Cruz Marker™ compatible goat anti-rabbit IgG-HRP: sc-2030 (dilution range: 1:2000-1:5000), Cruz Marker™ Molecular Weight Standards: sc-2035, TBS Blotto A Blocking Reagent: sc-2333 and Western Blotting Luminol Reagent: sc-2048. 2) Immunoprecipitation: use Protein A/G PLUS-Agarose: sc-2003 (0.5 ml agarose/2.0 ml). 3) Immunofluorescence: use goat anti-rabbit IgG-FITC: sc-2012 (dilution range: 1:100-1:400) or goat anti-rabbit IgG-TR: sc-2780 (dilution range: 1:100-1:400) with UltraCruz™ Mounting Medium: sc-24941.

DATA



CASZ1 (E-14): sc-135453. Western blot analysis of CASZ1 expression in non-transfected: sc-117752 (A) and human CASZ1 transfected: sc-116278 (B) 293T whole cell lysates.



CASZ1 (E-14): sc-135453. Western blot analysis of CASZ1 expression in MCF7 nuclear extract.

SELECT PRODUCT CITATIONS

- Kang, D., et al. 2015. EBV BART MicroRNAs target multiple pro-apoptotic cellular genes to promote epithelial cell survival. *PLoS Pathog.* 11: e1004979.

STORAGE

Store at 4° C, **DO NOT FREEZE**. Stable for one year from the date of shipment. Non-hazardous. No MSDS required.

RESEARCH USE

For research use only, not for use in diagnostic procedures.

PROTOCOLS

See our web site at www.scbt.com or our catalog for detailed protocols and support products.



Try **CASZ1 (B-11): sc-398303**, our highly recommended monoclonal alternative to CASZ1 (E-14).