

collectrin (I-14): sc-135464

BACKGROUND

Collectrin, also known as TMEM27 (transmembrane protein 27) or NX17, is a 222 amino acid single-pass type I membrane protein belonging to the TMEM27 family. Collectrin interacts with Snapin to regulate SNARE complex function, which in turn controls Insulin exocytosis. Collectrin has been found to stimulate β cell replication and plays a role in renal amino acid uptake. Localizing to luminal surface and cytoplasm of renal collecting ducts of the cortex and medulla, collectrin is also found in β cells of pancreatic islets, where its extracellular domain becomes cleaved following translation and is released from the cell membrane. Collectrin exists as a homodimer, undergoes post-translational glycosylation and interacts with XTRP2.

REFERENCES

- Zhang, H., Wada, J., Kanwar, Y.S., Tsuchiyama, Y., Hiragushi, K., Hida, K., Shikata, K. and Makino, H. 1999. Screening for genes upregulated in 5/6 nephrectomized mouse kidney. *Kidney Int.* 56: 549-558.
- Zhang, H., Wada, J., Hida, K., Tsuchiyama, Y., Hiragushi, K., Shikata, K., Wang, H., Lin, S., Kanwar, Y.S. and Makino, H. 2001. Collectrin, a collecting duct-specific transmembrane glycoprotein, is a novel homolog of ACE2 and is developmentally regulated in embryonic kidneys. *J. Biol. Chem.* 276: 17132-17139.
- Fukui, K., Yang, Q., Cao, Y., Takahashi, N., Hatakeyama, H., Wang, H., Wada, J., Zhang, Y., Marselli, L., Nammo, T., Yoneda, K., Onishi, M., Higashiyama, S., Matsuzawa, Y., Gonzalez, F.J., Weir, G.C., Kasai, H., Shimomura, I., et al. 2005. The HNF-1 target collectrin controls Insulin exocytosis by SNARE complex formation. *Cell Metab.* 2: 373-384.
- Danilczyk, U., Sarao, R., Remy, C., Benabbas, C., Stange, G., Richter, A., Arya, S., Pospisilik, J.A., Singer, D., Camargo, S.M., Makrides, V., Ramadan, T., Verrey, F., Wagner, C.A. and Penninger, J.M. 2006. Essential role for collectrin in renal amino acid transport. *Nature* 444: 1088-1091.
- Mount, D.B. 2007. Collectrin and the kidney. *Curr. Opin. Nephrol. Hypertens.* 16: 427-429.
- Online Mendelian Inheritance in Man, OMIM[™]. 2007. Johns Hopkins University, Baltimore, MD. MIM Number: 300631. World Wide Web URL: <http://www.ncbi.nlm.nih.gov/omim/>
- Pasquali, L., d'Annunzio, G., Gastaldi, R., Di Battista, E., Calcaterra, V., Larizza, D., Lorini, R. and D'Amato, E. 2009. Collectrin gene screening in Turner syndrome patients with kidney malformation. *J. Genet.* 88 105-108.

CHROMOSOMAL LOCATION

Genetic locus: TMEM27 (human) mapping to Xp22.2; Tmem27 (mouse) mapping to X F5.

STORAGE

Store at 4° C, ****DO NOT FREEZE****. Stable for one year from the date of shipment. Non-hazardous. No MSDS required.

RESEARCH USE

For research use only, not for use in diagnostic procedures.

SOURCE

collectrin (I-14) is an affinity purified rabbit polyclonal antibody raised against a peptide mapping within a C-terminal cytoplasmic domain of collectrin of human origin.

PRODUCT

Each vial contains 100 μ g IgG in 1.0 ml of PBS with < 0.1% sodium azide and 0.1% gelatin.

Blocking peptide available for competition studies, sc-135464 P, (100 μ g peptide in 0.5 ml PBS containing < 0.1% sodium azide and 0.2% BSA).

APPLICATIONS

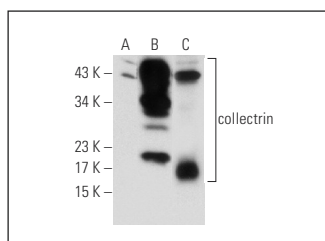
collectrin (I-14) is recommended for detection of collectrin of mouse, rat and human origin by Western Blotting (starting dilution 1:100, dilution range 1:50-1:500), immunoprecipitation [1-2 μ g per 100-500 μ g of total protein (1 ml of cell lysate)], immunofluorescence (starting dilution 1:25, dilution range 1:25-1:250) and solid phase ELISA (starting dilution 1:30, dilution range 1:30-1:3000).

Suitable for use as control antibody for collectrin siRNA (h): sc-90959, collectrin siRNA (m): sc-142481, collectrin shRNA Plasmid (h): sc-90959-SH, collectrin shRNA Plasmid (m): sc-142481-SH, collectrin shRNA (h) Lentiviral Particles: sc-90959-V and collectrin shRNA (m) Lentiviral Particles: sc-142481-V.

Molecular Weight of collectrin: 32 kDa.

Positive Controls: collectrin (h): 293T Lysate: sc-116311, mouse pancreas extract: sc-364244 or mouse kidney extract: sc-2255.

DATA



collectrin (I-14): sc-135464. Western blot analysis of collectrin expression in non-transfected: sc-117752 (A) and human collectrin transfected: sc-116311 (B) 293T whole cell lysates and mouse kidney tissue extract (C).

PROTOCOLS

See our web site at www.scbt.com or our catalog for detailed protocols and support products.