

MPV17L2 (E-13): sc-135472

BACKGROUND

Consisting of around 63 million bases with over 1,400 genes, chromosome 19 makes up over 2% of human genomic DNA. Chromosome 19 includes a diversity of interesting genes and is recognized for having the greatest gene density of the human chromosomes. It is the genetic home for a number of immunoglobulin superfamily members including the killer cell and leukocyte Ig-like receptors, a number of ICAMs, the CEACAM and PSG family, and Fc α receptors. Key genes for eye color and hair color also map to chromosome 19. Peutz-Jeghers syndrome, spinocerebellar ataxia type 6, the stroke disorder CADASIL, hypercholesterolemia and Insulin-dependent diabetes have been linked to chromosome 19. Translocations with chromosome 19 and chromosome 14 can be seen in some lymphoproliferative disorders and typically involve the proto-oncogene BCL3. The MPV17L2 gene product has been provisionally designated MPV17L2 pending further characterization.

REFERENCES

- Zimmermann, W., Weber, B., Ortlieb, B., Rudert, F., Schempp, W., Fiebig, H.H., Shively, J.E., von Kleist, S. and Thompson, J.A. 1988. Chromosomal localization of the carcinoembryonic antigen gene family and differential expression in various tumors. *Cancer Res.* 48: 2550-2554.
- LaPoint, S.F., Patel, U. and Rubio, A. 2000. Cerebral autosomal dominant arteriopathy with subcortical infarcts and leukoencephalopathy (CADASIL). *Adv. Anat. Pathol.* 7: 307-321.
- Trettel, F., Mantuano, E., Calabresi, V., Veneziano, L., Olsen, A.S., Georgescu, A., Gordon, L., Sabbadini, G., Frontali, M. and Jodice C. 2000. A fine physical map of the CACNA1A gene region on 19p13.1-p13.2 chromosome. *Gene* 241: 45-50.
- Buchet-Poyau, K., Mehenni, H., Radhakrishna, U. and Antonarakis, S.E. 2002. Search for the second Peutz-Jeghers syndrome locus: exclusion of the STK13, PRKCG, KLK10, and PSCD2 genes on chromosome 19 and the STK11IP gene on chromosome 2. *Cytogenet. Genome Res.* 97: 171-178.
- Moodie, S.J., Norman, P.J., King, A.L., Fraser, J.S., Curtis, D., Ellis, H.J., Vaughan, R.W. and Ciclitira, P.J. 2002. Analysis of candidate genes on chromosome 19 in coeliac disease: an association study of the KIR and LILR gene clusters. *Eur. J. Immunogenet.* 29: 287-291.

CHROMOSOMAL LOCATION

Genetic locus: MPV17L2 (human) mapping to 19p13.11.

SOURCE

MPV17L2 (E-13) is an affinity purified rabbit polyclonal antibody raised against a peptide mapping within an internal region of MPV17L2 of human origin.

PRODUCT

Each vial contains 100 μ g IgG in 1.0 ml of PBS with < 0.1% sodium azide and 0.1% gelatin.

Blocking peptide available for competition studies, sc-135472 P, (100 μ g peptide in 0.5 ml PBS containing < 0.1% sodium azide and 0.2% BSA).

APPLICATIONS

MPV17L2 (E-13) is recommended for detection of MPV17L2 of human origin by Western Blotting (starting dilution 1:100, dilution range 1:50-1:500), immunofluorescence (starting dilution 1:25, dilution range 1:25-1:250) and solid phase ELISA (starting dilution 1:30, dilution range 1:30-1:3000); non cross-reactive with FKSG2, FKSG80 or FKSG83.

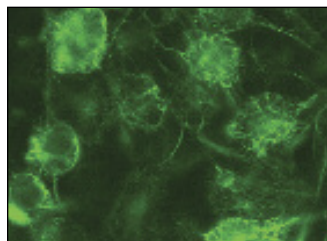
MPV17L2 (E-13) is also recommended for detection of MPV17L2 in additional species, including bovine and porcine.

Suitable for use as control antibody for MPV17L2 siRNA (h): sc-97720, MPV17L2 shRNA Plasmid (h): sc-97720-SH and MPV17L2 shRNA (h) Lentiviral Particles: sc-97720-V.

RECOMMENDED SECONDARY REAGENTS

To ensure optimal results, the following support (secondary) reagents are recommended: 1) Western Blotting: use goat anti-rabbit IgG-HRP: sc-2004 (dilution range: 1:2000-1:100,000) or Cruz Marker[™] compatible goat anti-rabbit IgG-HRP: sc-2030 (dilution range: 1:2000-1:5000), Cruz Marker[™] Molecular Weight Standards: sc-2035, TBS Blotto A Blocking Reagent: sc-2333 and Western Blotting Luminol Reagent: sc-2048. 2) Immunofluorescence: use goat anti-rabbit IgG-FITC: sc-2012 (dilution range: 1:100-1:400) or goat anti-rabbit IgG-TR: sc-2780 (dilution range: 1:100-1:400) with UltraCruz[™] Mounting Medium: sc-24941.

DATA



MPV17L2 (E-13): sc-135472. Immunofluorescence staining of methanol-fixed HeLa cells showing membrane localization.

STORAGE

Store at 4° C, ****DO NOT FREEZE****. Stable for one year from the date of shipment. Non-hazardous. No MSDS required.

RESEARCH USE

For research use only, not for use in diagnostic procedures.

PROTOCOLS

See our web site at www.scbt.com or our catalog for detailed protocols and support products.