

# SURF-4 (FT-3): sc-135573

## BACKGROUND

SURF-4 (surfeit 4), also known as ERV29, is a 269 amino acid multi-pass membrane protein that localizes to the endoplasmic reticulum and contains several putative transmembrane regions. Existing as multiple alternatively spliced isoforms, SURF-4 is thought to be involved in protein transport between the endoplasmic reticulum and golgi compartments. Human SURF-4 shares 99% sequence identity with its mouse counterpart, strongly suggesting a conserved role between species. The gene encoding SURF-4 maps to human chromosome 9, which houses over 900 genes and comprises nearly 4% of the human genome. Hereditary hemorrhagic telangiectasia, which is characterized by harmful vascular defects, and familial dysautonomia, are both associated with chromosome 9. Notably, chromosome 9 encompasses the largest interferon family gene cluster.

## REFERENCES

1. Reeves, J.E. and Fried, M. 1995. The SURF-4 gene encodes a novel 30 kDa integral membrane protein. *Mol. Membr. Biol.* 12: 201-208.
2. Garson, K., Duhig, T. and Fried, M. 1996. Tissue-specific processing of the SURF-5 and SURF-4 mRNAs. *Gene Expr.* 6: 209-218.
3. Duhig, T., Ruhrberg, C., Mor, O. and Fried, M. 1998. The human Surfeit locus. *Genomics* 52: 72-78.
4. Belden, W.J. and Barlowe, C. 2001. Role of Erv29p in collecting soluble secretory proteins into ER-derived transport vesicles. *Science* 294: 1528-1531.
5. Breuza, L., Halbeisen, R., Jenö, P., Otte, S., Barlowe, C., Hong, W. and Hauri, H.P. 2004. Proteomics of endoplasmic reticulum-Golgi intermediate compartment (ERGIC) membranes from brefeldin A-treated Hep G2 cells identifies ERGIC-32, a new cycling protein that interacts with human Erv46. *J. Biol. Chem.* 279: 47242-47253.
6. Mitrovic, S., Ben-Tekaya, H., Koegler, E., Gruenberg, J. and Hauri, H.P. 2008. The cargo receptors SURF4, endoplasmic reticulum-Golgi intermediate compartment (ERGIC)-53, and p25 are required to maintain the architecture of ERGIC and Golgi. *Mol. Biol. Cell* 19: 1976-1990.
7. Online Mendelian Inheritance in Man, OMIM™. 2008. Johns Hopkins University, Baltimore, MD. MIM Number: 185660. World Wide Web URL: <http://www.ncbi.nlm.nih.gov/omim/>

## CHROMOSOMAL LOCATION

Genetic locus: SURF4 (human) mapping to 9q34.2; Surf4 (mouse) mapping to 2 A3.

## SOURCE

SURF-4 (FT-3) is a mouse monoclonal antibody raised against recombinant SURF-4 protein of human origin.

## PRODUCT

Each vial contains 100 µg IgG<sub>2a</sub> kappa light chain in 1.0 ml of PBS with < 0.1% sodium azide and 0.1% gelatin.

## APPLICATIONS

SURF-4 (FT-3) is recommended for detection of SURF-4 of mouse and human origin by Western Blotting (starting dilution 1:200, dilution range 1:100-1:1000), immunoprecipitation [1-2 µg per 100-500 µg of total protein (1 ml of cell lysate)] and solid phase ELISA (starting dilution 1:30, dilution range 1:30-1:3000).

Suitable for use as control antibody for SURF-4 siRNA (h): sc-92607, SURF-4 siRNA (m): sc-153935, SURF-4 shRNA Plasmid (h): sc-92607-SH, SURF-4 shRNA Plasmid (m): sc-153935-SH, SURF-4 shRNA (h) Lentiviral Particles: sc-92607-V and SURF-4 shRNA (m) Lentiviral Particles: sc-153935-V.

Molecular Weight of SURF-4: 30 kDa.

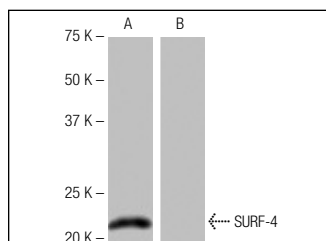
Positive Controls: HeLa whole cell lysate: sc-2200, human SURF-4 transfected 293T whole cell lysate or Jurkat whole cell lysate: sc-2204.

## RECOMMENDED SUPPORT REAGENTS

To ensure optimal results, the following support reagents are recommended:

- 1) Western Blotting: use m-IgGκ BP-HRP: sc-516102 or m-IgGκ BP-HRP (Cruz Marker): sc-516102-CM (dilution range: 1:1000-1:10000), Cruz Marker™ Molecular Weight Standards: sc-2035, TBS Blotto A Blocking Reagent: sc-2333 and Western Blotting Luminol Reagent: sc-2048. 2) Immunoprecipitation: use Protein A/G PLUS-Agarose: sc-2003 (0.5 ml agarose/2.0 ml).

## DATA



SURF-4 (FT-3): sc-135573. Western blot analysis of SURF-4 expression in human SURF-4 transfected (A) and non-transfected (B) 293T whole cell lysates.

## STORAGE

Store at 4° C, \*\*DO NOT FREEZE\*\*. Stable for one year from the date of shipment. Non-hazardous. No MSDS required.

## RESEARCH USE

For research use only, not for use in diagnostic procedures.

## PROTOCOLS

See our web site at [www.scbt.com](http://www.scbt.com) for detailed protocols and support products.