

# TRIM16 (5-RY8): sc-135586

## BACKGROUND

The tripartite motif (TRIM) family of proteins are characterized by a conserved TRIM domain that includes a coiled-coil region, a B-box type zinc finger, one RING finger and three zinc-binding domains. TRIM16 (tripartite motif-containing 16), also known as EBBP (Estrogen-responsive B box protein), is a 564 amino acid protein that belongs to the TRIM family and contains 2 B box-type zinc fingers and one B30.2/SPRY domain. TRIM16 is highly expressed in testis, ovary, small intestine, colon, placenta, heart, skeletal muscle and mammary gland. However, it is more highly expressed in fetus than in the corresponding adult tissues. TRIM16 is also expressed in basal keratinocytes, where it is thought to play a role in the regulation of keratinocyte differentiation. Overexpression of TRIM16 has been shown to increase histone acetylation in retinoid-resistant cancer cells and therefore may be a potential target for therapeutic drugs.

## REFERENCES

1. Liu, H.L., Golder-Novoselsky, E., Seto, M.H., Webster, L., McClary, J. and Zajchowski, D.A. 1998. The novel estrogen-responsive B-box protein (EBBP) gene is tamoxifen-regulated in cells expressing an estrogen receptor DNA-binding domain mutant. *Mol. Endocrinol.* 12: 1733-1748.
2. Beer, H.D., Munding, C., Dubois, N., Mamie, C., Hohl, D. and Werner, S. 2002. The estrogen-responsive B-box protein: a novel regulator of keratinocyte differentiation. *J. Biol. Chem.* 277: 20740-20749.
3. Munding, C., Keller, M., Niklaus, G., Papin, S., Tschopp, J., Werner, S. and Beer, H.D. 2006. The estrogen-responsive B-box protein: a novel enhancer of interleukin-1 $\beta$  secretion. *Cell Death Differ.* 13: 1938-1949.
4. Cheung, B.B., Bell, J., Raif, A., Bohlken, A., Yan, J., Roediger, B., Poljak, A., Smith, S., Lee, M., Thomas, W.D., Kavallaris, M., Norris, M., Haber, M., Liu, H.L., Zajchowski, D. and Marshall, G.M. 2006. The estrogen-responsive B-box protein is a novel regulator of the retinoid signal. *J. Biol. Chem.* 281: 18246-18256.
5. Ozato, K., Shin, D.M., Chang, T.H. and Morse, H.C. 2008. TRIM family proteins and their emerging roles in innate immunity. *Nat. Rev. Immunol.* 8: 849-860.
6. Raif, A., Marshall, G.M., Bell, J.L., Koach, J., Tan, O., D'andreti, C., Thomas, W., Sekyere, E., Norris, M., Haber, M., Kavallaris, M. and Cheung, B.B. 2009. The estrogen-responsive B-box protein (EBBP) restores retinoid sensitivity in retinoid-resistant cancer cells via effects on histone acetylation. *Cancer Lett.* 277: 82-90.

## CHROMOSOMAL LOCATION

Genetic locus: TRIM16 (human) mapping to 17p12.

## SOURCE

TRIM16 (5-RY8) is a mouse monoclonal antibody raised against recombinant TRIM16 protein of human origin.

## PRODUCT

Each vial contains 100  $\mu$ g IgG<sub>2a</sub> kappa light chain in 1.0 ml of PBS with < 0.1% sodium azide and 0.1% gelatin.

## APPLICATIONS

TRIM16 (5-RY8) is recommended for detection of TRIM16 of human origin by Western Blotting (starting dilution 1:200, dilution range 1:100-1:1000), immunoprecipitation [1-2  $\mu$ g per 100-500  $\mu$ g of total protein (1 ml of cell lysate)] and solid phase ELISA (starting dilution 1:30, dilution range 1:30-1:3000).

Suitable for use as control antibody for TRIM16 siRNA (h): sc-76740, TRIM16 shRNA Plasmid (h): sc-76740-SH and TRIM16 shRNA (h) Lentiviral Particles: sc-76740-V.

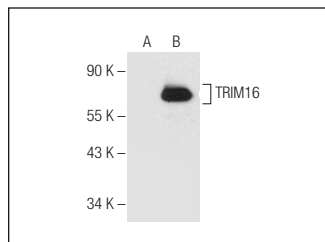
Molecular Weight of TRIM16: 64/40 kDa.

Positive Controls: TRIM16 (h): 293T Lysate: sc-370211.

## RECOMMENDED SUPPORT REAGENTS

To ensure optimal results, the following support reagents are recommended: 1) Western Blotting: use m-IgG $\kappa$  BP-HRP: sc-516102 or m-IgG $\kappa$  BP-HRP (Cruz Marker): sc-516102-CM (dilution range: 1:1000-1:10000), Cruz Marker™ Molecular Weight Standards: sc-2035, UltraCruz® Blocking Reagent: sc-516214 and Western Blotting Luminol Reagent: sc-2048. 2) Immunoprecipitation: use Protein A/G PLUS-Agarose: sc-2003 (0.5 ml agarose/2.0 ml).

## DATA



TRIM16 (5-RY8): sc-135586. Western blot analysis of TRIM16 expression in non-transfected: sc-117752 (A) and human TRIM16 transfected: sc-370211 (B) 293T whole cell lysates.

## STORAGE

Store at 4° C, \*\*DO NOT FREEZE\*\*. Stable for one year from the date of shipment. Non-hazardous. No MSDS required.

## RESEARCH USE

For research use only, not for use in diagnostic procedures.

## PROTOCOLS

See our web site at [www.scbt.com](http://www.scbt.com) for detailed protocols and support products.