

# WAPL (2H6): sc-135607

## BACKGROUND

WAPL (wings apart-like), also known as WAPAL or FOE, is a 1,190 amino acid protein that contains one WAPL domain and is expressed as two alternatively spliced isoforms, one of which localizes to the nucleus. Expressed in an isoform-dependent manner in heart, skeletal muscle and uterine cervix tumor tissue, WAPL is involved in sister-chromatid adhesion and overall cell growth, specifically playing a role in the development and metastasis of cancerous tissue. The gene encoding WAPL maps to human chromosome 10, which houses over 1,200 genes and comprises nearly 4.5% of the human genome. Defects in some of the genes that map to chromosome 10 are associated with Charcot-Marie Tooth disease, Jackson-Weiss syndrome, Usher syndrome, nonsyndromic deafness, Wolman's syndrome, Cowden syndrome, multiple endocrine neoplasia type 2 and porphyria.

## REFERENCES

- Oikawa, K., et al. 2004. Expression of a novel human gene, human wings apart-like (hWAPL), is associated with cervical carcinogenesis and tumor progression. *Cancer Res.* 64: 3545-3549.
- Kwiatkowski, B.A., et al. 2004. Identification and cloning of a novel chromatin-associated protein partner of Epstein-Barr nuclear protein 2. *Exp. Cell Res.* 300: 223-233.
- Kuroda, M., et al. 2005. A dioxin sensitive gene, mammalian WAPL, is implicated in spermatogenesis. *FEBS Lett.* 579: 167-172.
- Kueng, S., et al. 2006. WAPL controls the dynamic association of cohesin with chromatin. *Cell* 127: 955-967.
- Gandhi, R., et al. 2006. Human WAPL is a cohesin-binding protein that promotes sister-chromatid resolution in mitotic prophase. *Curr. Biol.* 16: 2406-2417.
- Ohbayashi, T., et al. 2007. Unscheduled overexpression of human WAPL promotes chromosomal instability. *Biochem. Biophys. Res. Commun.* 356: 699-704.
- Oikawa, K., et al. 2008. Expression of various types of alternatively spliced WAPL transcripts in human cervical epithelia. *Gene* 423: 57-62.
- Ben-Shahar, T.R., et al. 2008. Eco1-dependent cohesin acetylation during establishment of sister chromatid cohesion. *Science* 321: 563-566.
- Online Mendelian Inheritance in Man, OMIM™. 2008. Johns Hopkins University, Baltimore, MD. MIM Number: 610754. World Wide Web URL: <http://www.ncbi.nlm.nih.gov/omim/>

## CHROMOSOMAL LOCATION

Genetic locus: WAPAL (human) mapping to 10q23.2.

## STORAGE

Store at 4° C, **\*\*DO NOT FREEZE\*\***. Stable for one year from the date of shipment. Non-hazardous. No MSDS required.

## RESEARCH USE

For research use only, not for use in diagnostic procedures.

## SOURCE

WAPL (2H6) is a mouse monoclonal antibody raised against recombinant WAPL protein of human origin.

## PRODUCT

Each vial contains 100 µg IgG<sub>2a</sub> in 1.0 ml PBS with < 0.1% sodium azide and 0.1% gelatin.

## APPLICATIONS

WAPL (2H6) is recommended for detection of WAPL of human origin by Western Blotting (starting dilution 1:200, dilution range 1:100-1:1000), immunoprecipitation [1-2 µg per 100-500 µg of total protein (1 ml of cell lysate)] and solid phase ELISA (starting dilution 1:30, dilution range 1:30-1:3000).

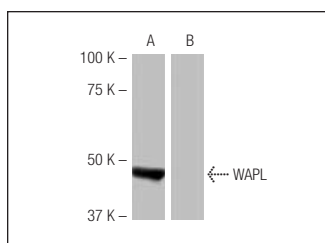
Suitable for use as control antibody for WAPL siRNA (h): sc-76910, WAPL shRNA Plasmid (h): sc-76910-SH and WAPL shRNA (h) Lentiviral Particles: sc-76910-V.

Molecular Weight of WAPL: 140 kDa.

## RECOMMENDED SECONDARY REAGENTS

To ensure optimal results, the following support (secondary) reagents are recommended: 1) Western Blotting: use goat anti-mouse IgG-HRP: sc-2005 (dilution range: 1:2000-1:32,000) or Cruz Marker™ compatible goat anti-mouse IgG-HRP: sc-2031 (dilution range: 1:2000-1:5000), Cruz Marker™ Molecular Weight Standards: sc-2035, TBS Blotto A Blocking Reagent: sc-2333 and Western Blotting Luminol Reagent: sc-2048. 2) Immunoprecipitation: use Protein A/G PLUS-Agarose: sc-2003 (0.5 ml agarose/2.0 ml).

## DATA



WAPL (2H6): sc-135607. Western blot analysis of WAPL expression in human WAPL transfected (A) and non-transfected (B) 293T whole cell lysates.

## PROTOCOLS

See our web site at [www.scbt.com](http://www.scbt.com) or our catalog for detailed protocols and support products.