

ZFYVE16 (1H6): sc-135608

BACKGROUND

Zinc-finger proteins contain DNA-binding domains and have a wide variety of functions, most of which encompass some form of transcriptional activation or repression. ZFYVE16 (zinc finger FYVE domain-containing protein 16), also known as endofin or endosome-associated FYVE domain protein, is a 1,539 amino acid protein containing one FYVE-type zinc finger domain. This domain, which has been shown to be necessary for the localization of ZFYVE16 to the early endosomes, mediates the association of ZFYVE16 with phosphatidylinositol 3-phosphate (PI3P). As a membrane-associated protein, ZFYVE16 also interacts with Smad4 and Tom1 to regulate membrane trafficking in the endosomal pathway. Three named isoforms of ZFYVE16 exist as a result of alternative splicing events.

REFERENCES

- Hayes, S., et al. 2002. TGF β receptor internalization into EEA1-enriched early endosomes: role in signaling to Smad2. *J. Cell Biol.* 158: 1239-1249.
- Seet, L.F., et al. 2004. Endofin recruits Tom1 to endosomes. *J. Biol. Chem.* 279: 4670-4679.
- Runyan, C.E., et al. 2005. The role of internalization in transforming growth factor β 1-induced Smad2 association with Smad anchor for receptor activation (SARA) and Smad2-dependent signaling in human mesangial cells. *J. Biol. Chem.* 280: 8300-8308.
- Seet, L.F. and Hong, W. 2005. Endofin recruits clathrin to early endosomes via Tom1. *J. Cell Sci.* 118: 575-587.
- Chen, Y.G., et al. 2007. Endofin, a FYVE domain protein, interacts with Smad4 and facilitates transforming growth factor- β signaling. *J. Biol. Chem.* 282: 9688-9695.
- Shi, W., et al. 2007. Endofin acts as a Smad anchor for receptor activation in BMP signaling. *J. Cell Sci.* 120: 1216-1224.
- Chen, Y., et al. 2007. Phosphoproteomics identified endofin, DCBLD2, and KIAA0582 as novel tyrosine phosphorylation targets of EGF signaling and Iressa in human cancer cells. *Proteomics* 7: 2384-2397.
- Shibui, T., et al. 2008. Isolation of cross-reacting antigen candidates by mRNA-display using a mixed cDNA library. *Biotechnol. Lett.* 30: 2037-2043.
- Zhang, F., et al. 2009. Sustained BMP signaling in osteoblasts stimulates bone formation by promoting angiogenesis and osteoblast differentiation. *J. Bone Miner. Res.* 24: 1224-1233.

CHROMOSOMAL LOCATION

Genetic locus: ZFYVE16 (human) mapping to 5q14.1.

SOURCE

ZFYVE16 (1H6) is a mouse monoclonal antibody raised against recombinant ZFYVE16 protein of human origin.

PRODUCT

Each vial contains 100 μ g IgG_{2b} kappa light chain in 1.0 ml of PBS with < 0.1% sodium azide and 0.1% gelatin.

APPLICATIONS

ZFYVE16 (1H6) is recommended for detection of ZFYVE16 of human origin by Western Blotting (starting dilution 1:200, dilution range 1:100-1:1000), immunoprecipitation [1-2 μ g per 100-500 μ g of total protein (1 ml of cell lysate)] and solid phase ELISA (starting dilution 1:30, dilution range 1:30-1:3000).

Suitable for use as control antibody for ZFYVE16 siRNA (h): sc-91838, ZFYVE16 shRNA Plasmid (h): sc-91838-SH and ZFYVE16 shRNA (h) Lentiviral Particles: sc-91838-V.

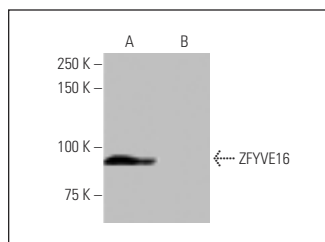
Molecular Weight of ZFYVE16 isoform 1/2: 169/88 kDa.

Positive Controls: human ZFYVE16 transfected 293T whole cell lysate.

RECOMMENDED SUPPORT REAGENTS

To ensure optimal results, the following support reagents are recommended: 1) Western Blotting: use m-IgG κ BP-HRP: sc-516102 or m-IgG κ BP-HRP (Cruz Marker): sc-516102-CM (dilution range: 1:1000-1:10000), Cruz MarkerTM Molecular Weight Standards: sc-2035, UltraCruz[®] Blocking Reagent: sc-516214 and Western Blotting Luminol Reagent: sc-2048. 2) Immunoprecipitation: use Protein A/G PLUS-Agarose: sc-2003 (0.5 ml agarose/2.0 ml).

DATA



ZFYVE16 (1H6): sc-135608. Western blot analysis of ZFYVE16 expression in human ZFYVE16 transfected (A) and non-transfected (B) 293T whole cell lysates.

STORAGE

Store at 4° C, ****DO NOT FREEZE****. Stable for one year from the date of shipment. Non-hazardous. No MSDS required.

RESEARCH USE

For research use only, not for use in diagnostic procedures.

PROTOCOLS

See our web site at www.scbt.com for detailed protocols and support products.