

SCML1 (8-RY28): sc-135622

BACKGROUND

Putative polycomb group (PcG) proteins assemble into multimeric protein complexes, which are involved in maintaining the transcriptional repressive state of genes over successive cell generations. SCML1 (sex comb on midleg-like 1 (*Drosophila*)), is a 329 amino acid PcG protein belonging to the SCM family. Localizing to nucleus, SCML1 plays a role in testis development, spermatogenesis and embryonal development. While ubiquitously expressed, SCML1 is found at highest levels in adult skeletal muscle, heart and fetal liver. SCML1 contains one SAM (sterile α motif) domain and is encoded by a gene that spans 18 kb, contains 6 exons, maps to human chromosome Xp22.13, and is transcribed from telomere to centromere. Three SCML1 isoforms exist as a result of alternative splicing events.

REFERENCES

1. van de Vosse, E., Walpole, S.M., Nicolaou, A., van der Bent, P., Cahn, A., Vaudin, M., Ross, M.T., Durham, J., Pavitt, R., Wilkinson, J., Grafham, D., Bergen, A.A., van Ommen, G.J., Yates, J.R., den Dunnen, J.T. and Trump, D. 1998. Characterization of SCML1, a new gene in Xp22, with homology to developmental polycomb genes. *Genomics* 49: 96-102.
2. Montini, E., Buchner, G., Spalluto, C., Andolfi, G., Caruso, A., den Dunnen, J.T., Trump, D., Rocchi, M., Ballabio, A. and Franco, B. 1999. Identification of SCML2, a second human gene homologous to the *Drosophila* sex comb on midleg (Scm): A new gene cluster on Xp22. *Genomics* 58: 65-72.
3. Online Mendelian Inheritance in Man, OMIM™. 2000. Johns Hopkins University, Baltimore, MD. MIM Number: 300227. World Wide Web URL: <http://www.ncbi.nlm.nih.gov/omim/>
4. Toutain, A., Dessay, B., Ronce, N., Ferrante, M.I., Tranchemontagne, J., Newbury-Ecob, R., Wallgren-Pettersson, C., Burn, J., Kaplan, J., Rossi, A., Russo, S., Walpole, I., Hartsfield, J.K., Oyen, N., Nemeth, A., et al. 2002. Refinement of the NHS locus on chromosome Xp22.13 and analysis of five candidate genes. *Eur. J. Hum. Genet.* 10: 516-520.
5. Wu, H.H. and Su, B. 2008. Adaptive evolution of SCML1 in primates, a gene involved in male reproduction. *BMC Evol. Biol.* 8: 192.
6. Kerppola, T.K. 2009. Polycomb group complexes—many combinations, many functions. *Trends Cell Biol.* 19: 692-704.

CHROMOSOMAL LOCATION

Genetic locus: SCML1 (human) mapping to Xp22.13.

SOURCE

SCML1 (8-RY28) is a mouse monoclonal antibody raised against recombinant SCML1 protein of human origin.

PRODUCT

Each vial contains 100 μ g IgG_{2a} kappa light chain in 1.0 ml of PBS with < 0.1% sodium azide and 0.1% gelatin.

RESEARCH USE

For research use only, not for use in diagnostic procedures.

APPLICATIONS

SCML1 (8-RY28) is recommended for detection of SCML1 of human origin by Western Blotting (starting dilution 1:200, dilution range 1:100-1:1000), immunoprecipitation [1-2 μ g per 100-500 μ g of total protein (1 ml of cell lysate)], immunofluorescence (starting dilution 1:50, dilution range 1:50-1:500), immunohistochemistry (including paraffin-embedded sections) (starting dilution 1:50, dilution range 1:50-1:500) and solid phase ELISA (starting dilution 1:30, dilution range 1:30-1:3000).

Suitable for use as control antibody for SCML1 siRNA (h): sc-90913, SCML1 shRNA Plasmid (h): sc-90913-SH and SCML1 shRNA (h) Lentiviral Particles: sc-90913-V.

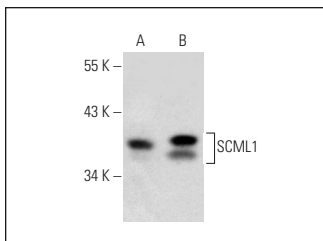
Molecular Weight of SCML1: 37 kDa.

Positive Controls: Jurkat nuclear extract: sc-2132 or ES-2 cell lysate: sc-24674.

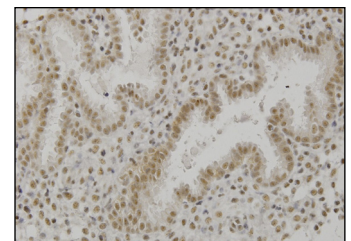
RECOMMENDED SUPPORT REAGENTS

To ensure optimal results, the following support reagents are recommended: 1) Western Blotting: use m-IgG κ BP-HRP: sc-516102 or m-IgG κ BP-HRP (Cruz Marker): sc-516102-CM (dilution range: 1:1000-1:10000), Cruz Marker™ Molecular Weight Standards: sc-2035, UltraCruz® Blocking Reagent: sc-516214 and Western Blotting Luminol Reagent: sc-2048. 2) Immunoprecipitation: use Protein A/G PLUS-Agarose: sc-2003 (0.5 ml agarose/2.0 ml). 3) Immunofluorescence: use m-IgG κ BP-FITC: sc-516140 or m-IgG κ BP-PE: sc-516141 (dilution range: 1:50-1:200) with UltraCruz® Mounting Medium: sc-24941 or UltraCruz® Hard-set Mounting Medium: sc-359850. 4) Immunohistochemistry: use m-IgG κ BP-HRP: sc-516102 with DAB, 50X: sc-24982 and Immunohistomount: sc-45086, or Organo/Limonene Mount: sc-45087.

DATA



SCML1 (8-RY28): sc-135622. Western blot analysis of SCML1 expression in Jurkat nuclear extract (A) and ES-2 whole cell lysate (B).



SCML1 (8-RY28): sc-135622. Immunoperoxidase staining of formalin-fixed, paraffin-embedded human endometrium tissue showing nuclear localization.

STORAGE

Store at 4° C, **DO NOT FREEZE**. Stable for one year from the date of shipment. Non-hazardous. No MSDS required.

PROTOCOLS

See our web site at www.scbt.com for detailed protocols and support products.