

p-SMC1 (Ser 957): sc-135652

BACKGROUND

The SMC (structural maintenance of chromosomes) family of proteins form heterodimeric complexes that modulate sister chromatid cohesion and chromosome condensation for mitosis. The two distinct classes of SMC protein complexes are comprised of SMC1 (also designated SB1.8) along with SMC3 (also designated HCAP for human chromosome-associated protein or Bamacan), and SMC2 (also designated hCAP-E) along with SMC4 (also designated hCAP-C). The SMC1/SMC3 complex is required for metaphase progression in mitotic cells and functions independently of the SMC2/SMC4 complex during the cell cycle. SMC1 is ubiquitously expressed in various human tissues, including thymus, testis and colon. SMC3 is expressed as a nuclear protein in the colon, but can also occur as a secreted proteoglycan (called Bamacan), which is expressed in testis and brain. Bamacan contains several glycosylation sites and is thought to play a role in basement membrane physiology. Human and mouse SMC1 are subject to phosphorylation on specific amino acid residues, such as Ser 957, which may activate SMC1 activity.

REFERENCES

1. Strunnikov, A.V., et al. 1993. SMC1: an essential yeast gene encoding a putative head/rod/tail protein is required for nuclear division and defines a new ubiquitous protein family. *J. Cell Biol.* 123: 1635-1648.
2. Rocques, P.J., et al. 1995. The human SB1.8 gene (DXS423E) encodes a putative chromosome segregation protein conserved in lower eukaryotes and prokaryotes. *Hum. Mol. Genet.* 4: 243-249.
3. Ljubimov, A.V., et al. 1996. Basement membrane abnormalities in human eyes with diabetic retinopathy. *J. Histochem. Cytochem.* 44: 1469-1479.
4. Wu, R.R. and Couchman, J.R. 1997. cDNA cloning of the basement membrane chondroitin sulfate proteoglycan core protein, Bamacan: a five domain structure including coiled-coil motifs. *J. Cell Biol.* 136: 433-444.
5. Schmiesing, J.A., et al. 1998. Identification of two distinct human SMC protein complexes involved in mitotic chromosome dynamics. *Proc. Natl. Acad. Sci. USA* 95: 12906-12911.

CHROMOSOMAL LOCATION

Genetic locus: SMC1A (human) mapping to Xp11.22; Smc1a (mouse) mapping to X F3.

SOURCE

p-SMC1 (Ser 957) is a rabbit polyclonal antibody raised against a short amino acid sequence containing Ser 957 phosphorylated SMC1 of human origin.

PRODUCT

Each vial contains 100 µg IgG in 1.0 ml PBS with < 0.1% sodium azide and 0.1% gelatin.

STORAGE

Store at 4° C, **DO NOT FREEZE**. Stable for one year from the date of shipment. Non-hazardous. No MSDS required.

APPLICATIONS

p-SMC1 (Ser 957) is recommended for detection of Ser 957 phosphorylated SMC1 of mouse and human origin by Western Blotting (starting dilution 1:200, dilution range 1:100-1:1000), immunoprecipitation [1-2 µg per 100-500 µg of total protein (1 ml of cell lysate)], immunofluorescence (starting dilution 1:50, dilution range 1:50-1:500) and immunohistochemistry (including paraffin-embedded sections) (starting dilution 1:50, dilution range 1:50-1:500).

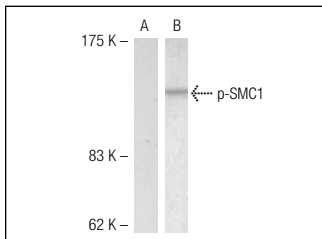
Molecular Weight of p-SMC1: 150 kDa.

Positive Controls: K-562 + UV cell extract.

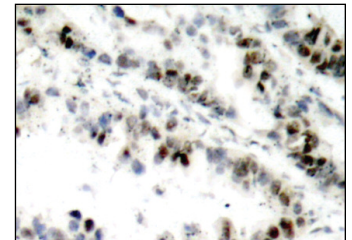
RECOMMENDED SECONDARY REAGENTS

To ensure optimal results, the following support (secondary) reagents are recommended: 1) Western blotting: use goat anti-rabbit IgG-HRP: sc-2004 (dilution range: 1:2000-1:100,000) or Cruz Marker™ compatible goat anti-rabbit IgG-HRP: sc-2030 (dilution range: 1:2000-1:5000), Cruz Marker™ Molecular Weight Standards: sc-2035, TBS Blotto B Blocking Reagent: sc-2335 (use 50 mM NaF, sc-24988, as diluent), Western Blotting Luminol Reagent: sc-2048 and Lambda Phosphatase: sc-200312A. 2) Immunoprecipitation: use Protein A/G PLUS-Agarose: sc-2003 (0.5 ml agarose/2.0 ml). 3) Immunofluorescence: use goat anti-rabbit IgG-FITC: sc-2012 (dilution range: 1:100-1:400) or goat anti-rabbit IgG-TR: sc-2780 (dilution range: 1:100-1:400) with UltraCruz™ Mounting Medium: sc-24941. 4) Immunohistochemistry: use ImmunoCruz™: sc-2051 or ABC: sc-2018 rabbit IgG Staining Systems.

DATA



p-SMC1 (Ser 957): sc-135652. Western blot analysis of phosphorylated SMC1 expression in untreated (A) and UV-treated (B) K-562 cell extracts.



p-SMC1 (Ser 957): sc-135652. Immunoperoxidase staining of formalin-fixed, paraffin-embedded human lung carcinoma tissue showing nuclear localization.

RESEARCH USE

For research use only, not for use in diagnostic procedures.

MONOS
Satisfaction
Guaranteed

Try **p-SMC1 (5911G5): sc-56746**, our highly recommended monoclonal alternative to p-SMC1 (Ser 957).