

# mGluR-2/3 (F-25): sc-135683

## BACKGROUND

The mGluR proteins (metabotropic glutamate receptors) are members of the G protein-coupled receptor family and are functionally and pharmacologically distinct from the GluR proteins (ionotropic glutamate receptors). The eight currently known mGluR proteins are mediated by two G proteins with opposing regulation of adenylate cyclase pathways. mGluR-2 (also known as GRM2) and mGluR-3 (also known as GRM3), two members of the mGluR family, are multi-pass membrane proteins that are thought to interact with GRASP, possibly acting as receptors for glutamate. Additionally, they may also be involved in the regulation of neurotransmission suppression and in synaptogenesis or synaptic stabilization.

## REFERENCES

1. Flor, P.J., Lindauer, K., Püttner, I., Rüegg, D., Lukic, S., Knöpfel, T. and Kuhn, R. 1995. Molecular cloning, functional expression and pharmacological characterization of the human metabotropic glutamate receptor type 2. *Eur. J. Neurosci.* 7: 622-629.
2. Makoff, A., Volpe, F., Lechuk, R., Harrington, K. and Emson, P. 1996. Molecular characterization and localization of human metabotropic glutamate receptor type 3. *Brain Res. Mol. Brain Res.* 40: 55-63.
3. Scherer, S.W., Duvoisin, R.M., Kuhn, R., Heng, H.H., Belloni, E. and Tsui, L.C. 1996. Localization of two metabotropic glutamate receptor genes, GRM3 and GRM8, to human chromosome 7q. *Genomics.* 31: 230-233.
4. Emile, L., Mercken, L., Apiou, F., Pradier, L., Bock, M.D., Menager, J., Clot, J., Doble, A. and Blanchard, J.C. 1996. Molecular cloning, functional expression, pharmacological characterization and chromosomal localization of the human metabotropic glutamate receptor type 3. *Neuropharmacology.* 35: 523-530.
5. Sartorius, L.J., Nagappan, G., Lipska, B.K., Lu, B., Sei, Y., Ren-Patterson, R., Li, Z., Weinberger, D.R. and Harrison, P.J. 2006. Alternative splicing of human metabotropic glutamate receptor 3. *J. Neurochem.* 96: 1139-1148.
6. Ghose, S., Crook, J.M., Bartus, C.L., Sherman, T.G., Herman, M.M., Hyde, T.M., Kleinman, J.E. and Akil, M. 2008. Metabotropic glutamate receptor 2 and 3 gene expression in the human prefrontal cortex and mesencephalon in schizophrenia. *Int. J. Neurosci.* 118: 1609-1627.

## CHROMOSOMAL LOCATION

Genetic locus: GRM2 (human) mapping to 3p21.1; GRM3 (human) mapping to 7q21.11; Grm2 (mouse) mapping to 9 F1; Grm3 (mouse) mapping to 5 A1.

## SOURCE

mGluR-2/3 (F-25) is an affinity purified rabbit polyclonal antibody raised against a peptide mapping at the C-terminus of mGluR-2 and mGluR-3 of rat origin.

## PRODUCT

Each vial contains IgG in 100 µl of TBS with < 0.1% sodium azide.

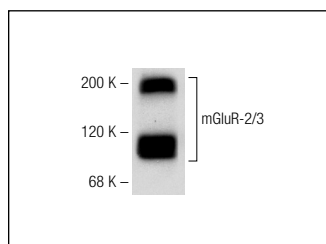
## APPLICATIONS

mGluR-2/3 (F-25) is recommended for detection of mGluR-2/3 of mouse, rat, human and zebrafish origin by Western Blotting (starting dilution to be determined by researcher, dilution range 1:100-1:5000), immunoprecipitation [1-2 µl per 100-500 µg of total protein (1 ml of cell lysate)] and immunofluorescence (starting dilution to be determined by researcher, dilution range 1:50-1:2500).

Molecular Weight of mGluR-2/3 monomer: 110 kDa.

Molecular Weight of mGluR-2/3 dimer: 220 kDa.

## DATA



mGluR-2/3 (F-25): sc-135683. Western blot analysis of mGluR-2/3 expression in rat hippocampal tissue extract.

## STORAGE

For immediate and continuous use, store at 4° C for up to one month. For sporadic use, freeze in working aliquots in order to avoid repeated freeze/thaw cycles. If turbidity is evident upon prolonged storage, clarify solution by centrifugation.

## RESEARCH USE

For research use only, not for use in diagnostic procedures.

## PROTOCOLS

See our web site at [www.scbt.com](http://www.scbt.com) or our catalog for detailed protocols and support products.



Try **mGluR-2 (A-7): sc-271655**, our highly recommended monoclonal alternative to mGluR-2/3 (F-25).