

DDEFL1 (57.66): sc-135740

BACKGROUND

DDEFL1 (development and differentiation enhancing factor-like 1), also known as ACAP4, UPLC1, CENTB6 or ASAP3 (ARFGAP with SH3 domain, ankyrin repeat and PH domain 3), is a 903 amino acid cytoplasmic protein belonging to the subfamily of ADP-ribosylation factor (ARF) GTPase-activating proteins. DDEFL1 contains two ANK repeats, an ARFGAP domain and a PH domain, and is expressed in lung, liver, blood leukocytes and primary hepatocarcinoma. The ARFGAP domain of DDEFL1 catalyzes the hydrolysis of GTP bound to ARF proteins. DDEFL1 promotes cell differentiation and migration, and has been implicated in the pathogenesis of hepatocellular carcinoma. Existing as two isoforms produced by alternative splicing events, DDEFL1 is encoded by a gene located on human chromosome 1. Human chromosome 1 spans 260 million base pairs, contains over 3,000 genes and comprises nearly 8% of the human genome.

REFERENCES

1. Jackson, T.R., et al. 2000. ACAPs are ARF6 GTPase-activating proteins that function in the cell periphery. *J. Cell Biol.* 151: 627-638.
2. Randazzo, P.A., et al. 2000. Molecular aspects of the cellular activities of ADP-ribosylation factors. *Sci. STKE* 2000: re1.
3. Okabe, H., et al. 2004. Isolation of development and differentiation enhancing factor-like 1 (DDEFL1) as a drug target for hepatocellular carcinomas. *Int. J. Oncol.* 24: 43-48.
4. Randazzo, P.A., et al. 2004. ARFGAPs: multifunctional proteins that regulate membrane traffic and Actin remodelling. *Cell. Signal.* 16: 401-413.
5. Sabe, H., et al. 2006. ARFGAP family proteins in cell adhesion, migration and tumor invasion. *Curr. Opin. Cell Biol.* 18: 558-564.
6. Fang, Z., et al. 2006. Proteomic identification and functional characterization of a novel ARF6 GTPase-activating protein, ACAP4. *Mol. Cell. Proteomics* 5: 1437-1449.
7. Randazzo, P.A., et al. 2007. ARFGAPs as regulators of the Actin cytoskeleton. *Biol. Cell* 99: 583-600.
8. Inoue, H., et al. 2007. ARFGAPs and their interacting proteins. *Traffic* 8: 1465-1475.
9. Ha, V.L., et al. 2008. ASAP3 is a focal adhesion-associated ARFGAP that functions in cell migration and invasion. *J. Biol. Chem.* 283: 14915-14926.

CHROMOSOMAL LOCATION

Genetic locus: ASAP3 (human) mapping to 1p36.12; Asap3 (mouse) mapping to 4 D3.

SOURCE

DDEFL1 (57.66) is a mouse monoclonal antibody raised against recombinant DDEFL1 of human origin.

PRODUCT

Each vial contains 200 µg IgG₁ kappa light chain in 1.0 ml of PBS with < 0.1% sodium azide and 0.1% gelatin.

APPLICATIONS

DDEFL1 (57.66) is recommended for detection of DDEFL1 of mouse, rat and human origin by Western Blotting (starting dilution 1:200, dilution range 1:100-1:1000), immunoprecipitation [1-2 µg per 100-500 µg of total protein (1 ml of cell lysate)] and solid phase ELISA (starting dilution 1:30, dilution range 1:30-1:3000).

Suitable for use as control antibody for DDEFL1 siRNA (h): sc-88264, DDEFL1 siRNA (m): sc-142915, DDEFL1 shRNA Plasmid (h): sc-88264-SH, DDEFL1 shRNA Plasmid (m): sc-142915-SH, DDEFL1 shRNA (h) Lentiviral Particles: sc-88264-V and DDEFL1 shRNA (m) Lentiviral Particles: sc-142915-V.

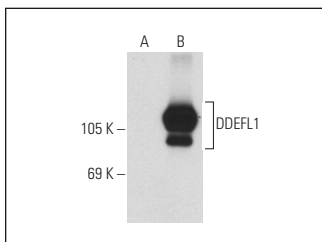
Molecular Weight of DDEFL1: 99 kDa.

Positive Controls: DDEFL1 (m): 293T Lysate: sc-125230.

RECOMMENDED SUPPORT REAGENTS

To ensure optimal results, the following support reagents are recommended: 1) Western Blotting: use m-IgGκ BP-HRP: sc-516102 or m-IgGκ BP-HRP (Cruz Marker): sc-516102-CM (dilution range: 1:1000-1:10000), Cruz Marker™ Molecular Weight Standards: sc-2035, UltraCruz® Blocking Reagent: sc-516214 and Western Blotting Luminol Reagent: sc-2048. 2) Immunoprecipitation: use Protein A/G PLUS-Agarose: sc-2003 (0.5 ml agarose/2.0 ml).

DATA



DDEFL1 (57.66): sc-135740. Western blot analysis of DDEFL1 expression in non-transfected: sc-117752 (A) and mouse DDEFL1 transfected: sc-125230 (B) 293T whole cell lysates.

SELECT PRODUCT CITATIONS

1. Fan, C., et al. 2014. ASAP3 expression in non-small cell lung cancer: association with cancer development and patients' clinical outcome. *Tumour Biol.* 35: 1489-1494.
2. Mao, X., et al. 2017. DDEFL1 correlated with Rho GTPases activity in breast cancer. *Oncotarget* 8: 112487-112497.

STORAGE

Store at 4° C, **DO NOT FREEZE**. Stable for one year from the date of shipment. Non-hazardous. No MSDS required.

RESEARCH USE

For research use only, not for use in diagnostic procedures. Not for resale.