

# Laminin $\beta$ -2 (22): sc-135967

## BACKGROUND

The Laminins comprise a growing family of disulfide-linked heterotrimers consisting of three genetically distinct polypeptide chains, designated  $\alpha$ ,  $\beta$  and  $\gamma$ . A major component of the basal lamina, Laminins play a crucial role in providing a scaffolding upon which tissues are assembled and which serves as a physical barrier separating specialized tissues. During embryogenesis and early development, cells migrate along basement membranes, which are required for the polarization of cells. The  $\beta$ -2 Laminin chain plays a role in melanoma spread, promoting tumor migration along the abluminal surface of a vessel, a phenomenon which has been termed extra-vascular migratory metastasis.

## REFERENCES

1. Yurchenco, P.D. and O'Rear, J.J. 1994. Basal lamina assembly. *Curr. Opin. Cell Biol.* 6: 674-681.
2. Engvall, E. 1995. Structure and function of basement membranes. *Int. J. Dev. Biol.* 39: 781-787.
3. Aumailley, M. and Krieg, T. 1996. Laminins: a family of diverse multifunctional molecules of basement membranes. *J. Invest. Dermatol.* 106: 209-214.
4. Nomizu, M., Utani, A., Beck, K., Otaka, A., Roller, P.P. and Yamada, Y. 1996. Mechanism of Laminin chain assembly into a triple-stranded coiled-coil structure. *Biochemistry* 35: 2885-2893.
5. Ziober, B.L., Lin, C.S. and Kramer, R.H. 1996. Laminin-binding integrins in tumor progression and metastasis. *Semin. Cancer Biol.* 7: 119-128.
6. Ancsin, J.B. and Kisilevsky, R. 1996. Laminin interactions important for basement membrane assembly are promoted by zinc and implicate Laminin zinc finger-like sequences. *J. Biol. Chem.* 271: 6845-6851.
7. Durkin, M.E., Gautam, M., Loechel, F., Sanes, J.R., Merlie, J.P., Albrechtsen, R. and Wewer, U.M. 1996. Structural organization of the human and mouse Laminin  $\beta$ -2 chain genes, and alternative splicing at the 5' end of the human transcript. *J. Biol. Chem.* 271: 13407-13416.
8. Vogel, W., Kanz, L., Brugger, W., Berndt, A. and Kosmehl, H. 1999. Expression of Laminin  $\beta$ -2 chain in normal human bone marrow. *Blood* 94: 1143-1145.
9. Libby, R.T., Lavalley, C.R., Balkema, G.W., Brunken, W.J. and Hunter, D.D. 1999. Disruption of Laminin  $\beta$ -2 chain production causes alterations in morphology and function in the CNS. *J. Neurosci.* 19: 9399-9411.

## CHROMOSOMAL LOCATION

Genetic locus: LAMB2 (human) mapping to 3p21.31; Lamb2 (mouse) mapping to 9 F2.

## SOURCE

Laminin  $\beta$ -2 (22) is a mouse monoclonal antibody raised against amino acids 506-691 of Laminin  $\beta$ -2 of human origin.

## RESEARCH USE

For research use only, not for use in diagnostic procedures. Not for resale

## PRODUCT

Each vial contains 50  $\mu$ g IgG<sub>1</sub> in 0.5 ml of PBS with < 0.1% sodium azide, 0.1% gelatin, 20% glycerol and 0.04% stabilizer protein.

## APPLICATIONS

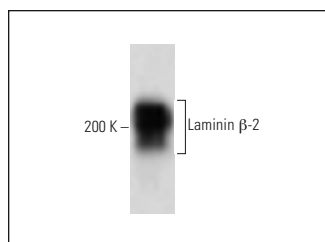
Laminin  $\beta$ -2 (22) is recommended for detection of Laminin  $\beta$ -2 of mouse, rat and human origin by Western Blotting (starting dilution 1:200, dilution range 1:100-1:1000), immunoprecipitation [1-2  $\mu$ g per 100-500  $\mu$ g of total protein (1 ml of cell lysate)] and immunofluorescence (starting dilution 1:50, dilution range 1:50-1:500).

Suitable for use as control antibody for Laminin  $\beta$ -2 siRNA (h): sc-35784, Laminin  $\beta$ -2 siRNA (m): sc-35785, Laminin  $\beta$ -2 shRNA Plasmid (h): sc-35784-SH, Laminin  $\beta$ -2 shRNA Plasmid (m): sc-35785-SH, Laminin  $\beta$ -2 shRNA (h) Lentiviral Particles: sc-35784-V and Laminin  $\beta$ -2 shRNA (m) Lentiviral Particles: sc-35785-V.

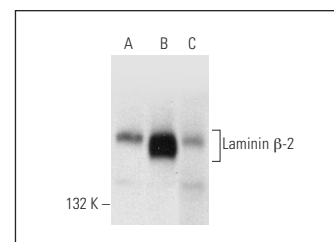
Molecular Weight of Laminin  $\beta$ -2: 200 kDa.

Positive Controls: Hep G2 cell lysate: sc-2227, HT-1080 whole cell lysate: sc-364183 or DU 145 cell lysate: sc-2268.

## DATA



Laminin  $\beta$ -2 (22): sc-135967. Western blot analysis of Laminin  $\beta$ -2 expression in Hep G2 whole cell lysate.



Laminin  $\beta$ -2 (22): sc-135967. Western blot analysis of Laminin  $\beta$ -2 expression in LNCaP (A), HT-1080 (B) and DU 145 (C) whole cell lysates.

## SELECT PRODUCT CITATIONS

1. You, H., Shang, W., Min, X., Weinreb, J., Li, Q., Leapman, M., Wang, L. and Tian, J. 2020. Sight and switch off: nerve density visualization for interventions targeting nerves in prostate cancer. *Sci. Adv.* 6: eaax6040.

## STORAGE

Store at 4° C, \*\*DO NOT FREEZE\*\*. Stable for one year from the date of shipment. Non-hazardous. No MSDS required.

## PROTOCOLS

See our web site at [www.scbt.com](http://www.scbt.com) for detailed protocols and support products.