

p-Cbl (pY700.47): sc-136013

BACKGROUND

Cbl (also designated the c-Cbl proto-oncogene, E3 ubiquitin-protein ligase CBL, Casitas B-lineage lymphoma proto-oncogene, and RING finger protein 55) has been identified as the cellular homolog of the v-Cbl oncogene isolated from an NFS/N mouse that developed a pre-B cell lymphoma following infection with the replication-competent Cas Br-M murine leukemic virus. c-Cbl is expressed at relatively high levels in a wide range of hematopoietic tumor cell lines as well as in normal tissues such as thymus and testis. The c-Cbl gene product has been identified as a cytoplasmic protein with apparent DNA binding and dimerization domains characteristic of transcription factors. A single c-Cbl locus termed CBL2 has been mapped to human chromosome 11q23.3. This region of chromosome 11 is involved in translocations and deletions in a broad range of leukemias; c-Cbl has been found to be translocated from chromosome 11 in leukemias with either t(4;11) or t(11;14) abnormalities. Two proteins related to c-Cbl have been identified as Cbl-b (RING finger protein 56) and Cbl-3 (RING finger protein 57). Cbl-b has a proline-rich domain, a nuclear localization signal, a C3HC4 zinc finger and a putative leucine zipper. Cbl-b is expressed in normal and malignant mammary epithelial cells, various normal tissues and hematopoietic tissue and cell lines. Data suggests that Cbl-b encodes a protein that can interact with signal transduction proteins to regulate their function or be regulated by them.

REFERENCES

1. Yunis, J.J. and Brunning, R.D. 1986. Prognostic significance of chromosomal abnormalities in acute leukaemias and myelodysplastic syndromes. *Clin. Haematol.* 15: 597-620.
2. Langdon, W.Y., Hartley, J.W., Klinken, S.P., Ruscetti, S.K. and Morse, H.C. 1989. v-Cbl, an oncogene from a dual-recombinant murine retrovirus that induces early B-lineage lymphomas. *Proc. Natl. Acad. Sci. USA* 86: 1168-1172.
3. Regnier, D.C., Kozak, C.A., Kingsley, D.M., Jenkins, N.A., Copeland, N.G., Langdon, W.Y. and Morse, H.C. 1989. Identification of two murine loci homologous to the v-Cbl oncogene. *J. Virol.* 63: 3678-3682.
4. Langdon, W.Y., Hyland, C.D., Grumont, R.J. and Morse, H.C., III. 1989. The c-Cbl proto-oncogene is preferentially expressed in thymus and testis tissue and encodes a nuclear protein. *J. Virol.* 63: 5420-5424.
5. Blake, T.J., Shapiro, M., Morse, H.C., III and Langdon, W.Y. 1991. The sequences of the human and mouse c-Cbl proto-oncogenes show v-Cbl was generated by a large truncation encompassing a proline-rich domain and a leucine zipper-like motif. *Oncogene* 6: 653-657.
6. Savage, P.D., Shapiro, M., Langdon, W.Y., Guerts von Kessel, A.D., Seuanez, H.N., Akao, Y., Croce, C. M., Morse, H.C., III and Kersery, J.H. 1991. Relationship of the human proto-oncogene CBL2 on 11q23 to the t(4;11), t(11;22), and t(11;14) breakpoints. *Cytogenet. Cell Genet.* 56: 112-5.

CHROMOSOMAL LOCATION

Genetic locus: CBL (human) mapping to 11q23.3; Cbl (mouse) mapping to 9 A5.1.

SOURCE

p-Cbl (pY700.47) is a mouse monoclonal antibody raised against a short amino acid sequence containing Tyr 700 phosphorylated Cbl of human origin.

PRODUCT

Each vial contains 50 µg IgG₁ in 0.5 ml of PBS with < 0.1% sodium azide and 0.1% gelatin.

APPLICATIONS

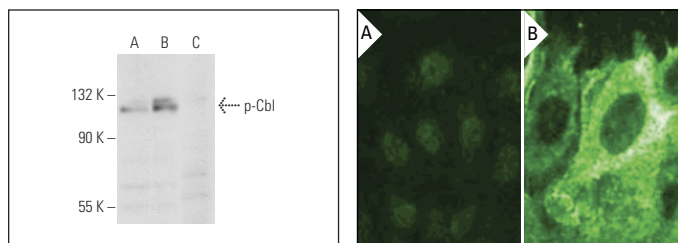
p-Cbl (pY700.47) is recommended for detection of Tyr 700 phosphorylated Cbl of mouse, rat and human origin by Western Blotting (starting dilution 1:200, dilution range 1:100-1:1000), immunoprecipitation [1-2 µg per 100-500 µg of total protein (1 ml of cell lysate)] and immunofluorescence (starting dilution 1:50, dilution range 1:50-1:500).

Suitable for use as control antibody for Cbl siRNA (h): sc-29242, Cbl siRNA (m): sc-29949, Cbl shRNA Plasmid (h): sc-29242-SH, Cbl shRNA Plasmid (m): sc-29949-SH, Cbl shRNA (h) Lentiviral Particles: sc-29242-V and Cbl shRNA (m) Lentiviral Particles: sc-29949-V.

Molecular Weight of p-Cbl: 120 kDa.

Positive Controls: Jurkat + pervanadate cell lysate: sc-24716.

DATA



p-Cbl (pY700.47): sc-136013. Western blot analysis of Cbl phosphorylation in untreated (A), pervanadate treated (B) and pervanadate and lambda protein phosphatase treated (C) Jurkat whole cell lysates.

p-Cbl (pY700.47): sc-136013. Immunofluorescence staining of paraformaldehyde-fixed untreated (A) and pervanadate-treated (B) serum-starved Eahy cells showing cytoplasmic localization.

STORAGE

Store at 4° C, ****DO NOT FREEZE****. Stable for one year from the date of shipment. Non-hazardous. No MSDS required.

RESEARCH USE

For research use only, not for use in diagnostic procedures. Not for resale.

PROTOCOLS

See our web site at www.scbt.com for detailed protocols and support products.