

# Sos 1 (25): sc-136235

## BACKGROUND

The superfamily of GTP-binding proteins, of which Ras proteins are prototypes, has been implicated in a broad range of biological activities. Studies have identified a family of guanine nucleotide-releasing factors (GRFs) that activate Ras in mammalian cells and an "adapter" protein (Sem 5/GRB2) that appears to mediate the interaction of GRFs with activated receptor molecules. Ras-GRF p140 promotes nucleotide exchange on Ras p21s but not on other members of the Ras gene superfamily. In addition, three mammalian homologs of the *Drosophila* Ras-GRF, Son of Sevenless (Sos), have been described. These include two from mouse, m Sos 1 and m Sos 2, and one from human, h Sos. Vav p95 has been reported to function as a GRF in activation of Ras by the T cell receptor and has been reported to have a domain similar to that of Dbl p115, which is a GRF specific for CDC42Hs. Subsequent to activation, Ras appears to interact with Raf, thereby activating the MAP kinase phosphorylation pathway.

## REFERENCES

- Lowenstein, E.J., Daly, R.J., Batzer, A.G., Li, W., Margolis, B., Lammers, R., Ullrich, A., Skolnik, E.Y., Bar-Sagi, D. and Schlessinger, J. 1992. The SH2 and SH3 domain-containing protein GRB2 links receptor tyrosine kinases to Ras signaling. *Cell* 40: 431-442.
- Chardin, P., Camonis, J.H., Gale, N.W., Van Aelst, L., Schlessinger, J., Wigler, M.H. and Bar-Sagi, D. 1993. Human Sos 1: a guanine nucleotide exchange factor for Ras that binds to GRB2. *Science* 260: 1338-1343.
- Skolnik, E.Y., Batzer, A., Li, N., Lee, C.H., Lowenstein, E., Mohammadi, M., Margolis, B. and Schlessinger, J. 1993. The function of GRB2 in linking the Insulin receptor to Ras signaling pathways. *Science* 260: 1953-1955.
- Simon, M.A., Dodson, G.S. and Rubin, G.M. 1993. An SH3-SH2-SH3 protein is required for p21 Ras 1 activation and binds to sevenless and Sos proteins *in vitro*. *Cell* 73: 169-177.
- Buday, L. and Downward, J. 1993. Epidermal growth factor regulates p21 Ras through the formation of a complex of receptor, GRB2 adaptor protein, and Sos nucleotide exchange factor. *Cell* 73: 611-620.
- Egan, S.E., Giddings, B.W., Brooks, M.W., Buday, L., Sizeland, A.M. and Weinberg, R.A. 1993. Association of Sos Ras exchange protein with GRB2 is implicated in tyrosine kinase signal transduction and transformation. *Nature* 363: 45-51.
- Zhang, X., Settleman, J., Kiriakis, J.M., Takeuchi-Suzuki, E., Elledge, S.J., Marshall, M.S., Bruder, J.T., Rapp, U.R. and Avruch, J. 1993. Normal and oncogenic p21 Ras proteins bind to the amino-terminal regulatory domain of c-RAF-1. *Nature* 364: 308-313.

## CHROMOSOMAL LOCATION

Genetic locus: SOS1 (human) mapping to 2p22.1; Sos1 (mouse) mapping to 17 E3.

## SOURCE

Sos 1 (25) is a mouse monoclonal antibody raised against amino acids 1-109 of Sos 1 of mouse origin.

## PRODUCT

Each vial contains 50 µg IgG<sub>1</sub> in 0.5 ml of PBS with < 0.1% sodium azide and 0.1% gelatin.

Blocking peptide available for competition studies, sc-136235 P, (100 µg peptide in 0.5 ml PBS containing < 0.1% sodium azide and 0.2% stabilizer protein).

## APPLICATIONS

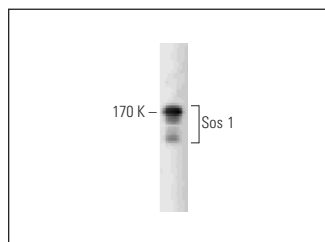
Sos 1 (25) is recommended for detection of Sos 1 of mouse, rat, human and canine origin by Western Blotting (starting dilution 1:200, dilution range 1:100-1:1000) and immunoprecipitation [1-2 µg per 100-500 µg of total protein (1 ml of cell lysate)].

Suitable for use as control antibody for Sos 1 siRNA (h): sc-29486, Sos 1 siRNA (m): sc-36524, Sos 1 shRNA Plasmid (h): sc-29486-SH, Sos 1 shRNA Plasmid (m): sc-36524-SH, Sos 1 shRNA (h) Lentiviral Particles: sc-29486-V and Sos 1 shRNA (m) Lentiviral Particles: sc-36524-V.

Molecular Weight of Sos 1: 170 kDa.

Positive Controls: 3611-RF whole cell lysate: sc-2215, K-562 whole cell lysate: sc-2203 or PC-12 cell lysate: sc-2250.

## DATA



Sos 1 (25): sc-136235. Western blot analysis of Sos 1 expression in PC-12 whole cell lysate.

## STORAGE

Store at 4° C, **\*\*DO NOT FREEZE\*\***. Stable for one year from the date of shipment. Non-hazardous. No MSDS required.

## RESEARCH USE

For research use only, not for use in diagnostic procedures. Not for resale.

## PROTOCOLS

See our web site at [www.scbt.com](http://www.scbt.com) for detailed protocols and support products.