

HspBP1 (28): sc-136354

BACKGROUND

HSP 70-interacting protein (HspBP1) belongs to a family of eukaryotic proteins identified as nucleotide exchange factors for HSP 70, which exhibit varying degrees of compartment and species specificity. HspBP1 interferes with the CHIP-induced degradation of immature forms of the cystic fibrosis transmembrane conductance regulator (CFTR) and stimulates CFTR maturation. HspBP1 binds to HSP 70, inhibits its activity and promotes dissociation of nucleotides from the HSP 70 ATPase domain. It is a protein mainly expressed in heart and skeletal muscle.

REFERENCES

1. Raynes, D.A. and Guerriero, V. 2000. Isolation and characterization of isoforms of HspBP1, inhibitors of HSP 70. *Biochim. Biophys. Acta* 1490: 203-207.
2. Kabani, M., et al. 2002. HspBP1, a homologue of the yeast Fes1 and SIs1 proteins, is an HSC 70 nucleotide exchange factor. *FEBS Lett.* 531: 339-342.
3. McLellan, C.A., et al. 2003. HspBP1, an HSP 70 cochaperone, has two structural domains and is capable of altering the conformation of the HSP 70 ATPase domain. *J. Biol. Chem.* 278: 19017-19022.
4. Raynes, D.A., et al. 2003. Increased expression of the HSP 70 cochaperone HspBP1 in tumors. *Tumour Biol.* 24: 281-285.
5. Tanimura, S., et al. 2004. Heat shock protein 70 binding protein 1 induces enhanced apoptotic response against anticancer drugs in tumor cells. *Nippon Rinsho* 62: 1291-1296.
6. Alberti, S., et al. 2004. The cochaperone HspBP1 inhibits the CHIP ubiquitin ligase and stimulates the maturation of the cystic fibrosis transmembrane conductance regulator. *Mol. Biol. Cell* 15: 4003-4010.

CHROMOSOMAL LOCATION

Genetic locus: HSPBP1 (human) mapping to 19q13.42; Hspbp1 (mouse) mapping to 7 A1.

SOURCE

HspBP1 (28) is a mouse monoclonal antibody raised against amino acids 245-352 of HspBP1 of human origin.

PRODUCT

Each vial contains 200 µg IgG₁ kappa light chain in 1.0 ml of PBS with < 0.1% sodium azide and 0.1% gelatin.

STORAGE

Store at 4° C, ****DO NOT FREEZE****. Stable for one year from the date of shipment. Non-hazardous. No MSDS required.

PROTOCOLS

See our web site at www.scbt.com for detailed protocols and support products.

APPLICATIONS

HspBP1 (28) is recommended for detection of HspBP1 of mouse, rat and human origin by Western Blotting (starting dilution 1:200, dilution range 1:100-1:1000), immunoprecipitation [1-2 µg per 100-500 µg of total protein (1 ml of cell lysate)] and immunofluorescence (starting dilution 1:50, dilution range 1:50-1:500).

Suitable for use as control antibody for HspBP1 siRNA (h): sc-45314, HspBP1 siRNA (m): sc-45315, HspBP1 shRNA Plasmid (h): sc-45314-SH, HspBP1 shRNA Plasmid (m): sc-45315-SH, HspBP1 shRNA (h) Lentiviral Particles: sc-45314-V and HspBP1 shRNA (m) Lentiviral Particles: sc-45315-V.

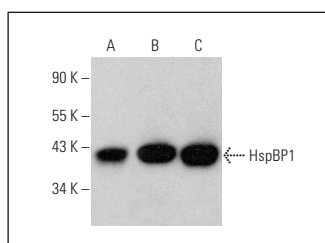
Molecular Weight of HspBP1: 45 kDa.

Positive Controls: HeLa whole cell lysate: sc-2200, BC3H1 cell lysate: sc-2299 or JAR cell lysate: sc-2276.

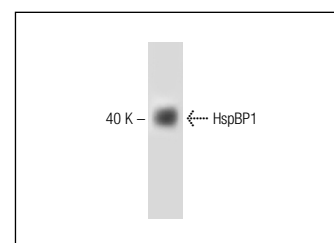
RECOMMENDED SUPPORT REAGENTS

To ensure optimal results, the following support reagents are recommended:
 1) Western Blotting: use m-IgGκ BP-HRP: sc-516102 or m-IgGκ BP-HRP (Cruz Marker): sc-516102-CM (dilution range: 1:1000-1:10000), Cruz Marker™ Molecular Weight Standards: sc-2035, UltraCruz® Blocking Reagent: sc-516214 and Western Blotting Luminol Reagent: sc-2048. 2) Immunoprecipitation: use Protein A/G PLUS-Agarose: sc-2003 (0.5 ml agarose/2.0 ml). 3) Immunofluorescence: use m-IgGκ BP-FITC: sc-516140 or m-IgGκ BP-PE: sc-516141 (dilution range: 1:50-1:200) with UltraCruz® Mounting Medium: sc-24941 or UltraCruz® Hard-set Mounting Medium: sc-359850.

DATA



HspBP1 (28): sc-136354. Western blot analysis of HspBP1 expression in HeLa (A), JAR (B) and BC₃H1 (C) whole cell lysates.



HspBP1 (28): sc-136354. Western blot analysis of HspBP1 expression in RSV-3T3 whole cell lysate.

RESEARCH USE

For research use only, not for use in diagnostic procedures.