

C4orf35 (N-13): sc-136594

BACKGROUND

C4orf35 (chromosome 4 open reading frame 35), also known as NYD-SP26 or casein-like phosphoprotein, is a 395 amino acid mitochondrial protein that localizes to cytoplasm. C4orf35 is encoded by a gene mapping to human chromosome 4, which represents approximately 6% of the human genome and contains nearly 900 genes. Notably, the Huntingtin gene, which is found to encode an expanded glutamine tract in cases of Huntington's disease, is on chromosome 4. FGFR-3 is also encoded by a gene that maps to human chromosome 4 and has been associated with thanatophoric dwarfism, achondroplasia, Muenke syndrome and bladder cancer. Chromosome 4 is also tied to Ellis-van Creveld syndrome, methylmalonic acidemia and polycystic kidney disease.

REFERENCES

- Hillier, L.W., et al. 2005. Generation and annotation of the DNA sequences of human chromosomes 2 and 4. *Nature* 434: 724-731.
- Cowan, C.M., et al. 2006. Selective neuronal degeneration in Huntington's disease. *Curr. Top. Dev. Biol.* 75: 25-71.
- Chandler, R.J., et al. 2007. Metabolic phenotype of methylmalonic acidemia in mice and humans: the role of skeletal muscle. *BMC Med. Genet.* 8: 64
- Cunningham, M.L., et al. 2007. Syndromic craniosynostosis: from history to hydrogen bonds. *Orthod. Craniofac. Res.* 10: 67-81.
- de Frutos, C.A., et al. 2007. Snail1 is a transcriptional effector of FGFR3 signaling during chondrogenesis and achondroplasias. *Dev. Cell* 13: 872-883.
- Ruiz-Perez, V.L., et al. 2007. Evc is a positive mediator of Ihh-regulated bone growth that localises at the base of chondrocyte cilia. *Development* 134: 2903-2912.
- Stack, E.C., et al. 2007. Neuroprotective effects of synaptic modulation in Huntington's disease R6/2 mice. *J. Neurosci.* 27: 12908-12915.
- Versteegh, F.G., et al. 2007. EvC Working Party. Growth hormone analysis and treatment in Ellis-van Creveld syndrome. *Am. J. Med. Genet. A* 143: 2113-2121.
- Doherty, E.S., et al. 2007. Muenke syndrome (FGFR3-related craniosynostosis): Expansion of the phenotype and review of the literature. *Am. J. Med. Genet. A* 143: 3204-3215.

CHROMOSOMAL LOCATION

Genetic locus: CABS1 (human) mapping to 4q13.3; 4931407G18Rik (mouse) mapping to 5.

SOURCE

C4orf35 (N-13) is an affinity purified rabbit polyclonal antibody raised against a peptide mapping near the N-terminus of C4orf35 of human origin.

STORAGE

Store at 4° C, ****DO NOT FREEZE****. Stable for one year from the date of shipment. Non-hazardous. No MSDS required.

PRODUCT

Each vial contains 100 µg IgG in 1.0 ml of PBS with < 0.1% sodium azide and 0.1% gelatin.

Blocking peptide available for competition studies, sc-136594 P, (100 µg peptide in 0.5 ml PBS containing < 0.1% sodium azide and 0.2% BSA).

APPLICATIONS

C4orf35 (N-13) is recommended for detection of C4orf35 of human origin, 4931407G18Rik of mouse origin and the corresponding rat homolog by Western Blotting (starting dilution 1:100, dilution range 1:50-1:500), immunoprecipitation [1-2 µg per 100-500 µg of total protein (1 ml of cell lysate)], immunofluorescence (starting dilution 1:25, dilution range 1:25-1:250) and solid phase ELISA (starting dilution 1:30, dilution range 1:30-1:3000); non cross-reactive with other C4orf family members.

Suitable for use as control antibody for C4orf35 siRNA (h): sc-89068, 4931407G18Rik siRNA (m): sc-140223, C4orf35 shRNA Plasmid (h): sc-89068-SH, 4931407G18Rik shRNA Plasmid (m): sc-140223-SH, C4orf35 shRNA (h) Lentiviral Particles: sc-89068-V and 4931407G18Rik shRNA (m) Lentiviral Particles: sc-140223-V.

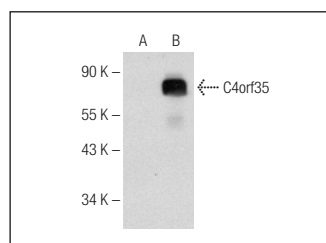
Molecular Weight of C4orf35: 43 kDa.

Positive Controls: C4orf35 (h): 293T Lysate: sc-116229.

RECOMMENDED SECONDARY REAGENTS

To ensure optimal results, the following support (secondary) reagents are recommended: 1) Western Blotting: use goat anti-rabbit IgG-HRP: sc-2004 (dilution range: 1:2000-1:100,000) or Cruz Marker™ compatible goat anti-rabbit IgG-HRP: sc-2030 (dilution range: 1:2000-1:5000), Cruz Marker™ Molecular Weight Standards: sc-2035, TBS Blotto A Blocking Reagent: sc-2333 and Western Blotting Luminol Reagent: sc-2048. 2) Immunoprecipitation: use Protein A/G PLUS-Agarose: sc-2003 (0.5 ml agarose/2.0 ml). 3) Immunofluorescence: use goat anti-rabbit IgG-FITC: sc-2012 (dilution range: 1:100-1:400) or goat anti-rabbit IgG-TR: sc-2780 (dilution range: 1:100-1:400) with UltraCruz™ Mounting Medium: sc-24941.

DATA



C4orf35 (N-13): sc-136594. Western blot analysis of C4orf35 expression in non-transfected: sc-117752 (A) and human C4orf35 transfected: sc-116229 (B) 293T whole cell lysates.

RESEARCH USE

For research use only, not for use in diagnostic procedures.