

CCDC111 (N-13): sc-136602

BACKGROUND

CCDC111 (coiled-coil domain containing 111) is a 560 amino acid protein encoded by a gene that maps to human chromosome 4q35.1. Representing approximately 6% of the human genome, chromosome 4 contains nearly 900 genes. Notably, the Huntingtin gene, which is found to encode an expanded glutamine tract in cases of Huntington's disease, is on chromosome 4. FGFR-3 is also encoded by a gene located on chromosome 4 and has been associated with thanatophoric dwarfism, achondroplasia, Muenke syndrome and bladder cancer. Chromosome 4 is also tied to Ellis-van Creveld syndrome, methylmalonic acidemia and polycystic kidney disease. Chromosome 4 reportedly contains the largest gene deserts (regions of the genome with no protein encoding genes) and has one of the two lowest recombination frequencies of the human chromosomes.

REFERENCES

- Hillier, L.W., Graves, T.A., Fulton, R.S., Fulton, L.A., Pepin, K.H., Minx, P., Wagner-McPherson, C., Layman, D., Wylie, K., Sekhon, M., Becker, M.C., Fewell, G.A., et al. 2005. Generation and annotation of the DNA sequences of human chromosomes 2 and 4. *Nature* 434: 724-731.
- Cowan, C.M. and Raymond, L.A. 2006. Selective neuronal degeneration in Huntington's disease. *Curr. Top. Dev. Biol.* 75: 25-71.
- Chandler, R.J., Sloan, J., Fu, H., Tsai, M., Stabler, S., Allen, R., Kaestner, K.H., Kazazian, H.H. and Venditti, C.P. 2007. Metabolic phenotype of methylmalonic acidemia in mice and humans: the role of skeletal muscle. *BMC Med. Genet.* 8: 64.
- Cunningham, M.L., Seto, M.L., Ratisoontorn, C., Heike, C.L. and Hing, A.V. 2007. Syndromic craniosynostosis: from history to hydrogen bonds. *Orthod. Craniofac. Res.* 10: 67-81.
- de Frutos, C.A., Vega, S., Manzanares, M., Flores, J.M., Huertas, H., Martínez-Frías, M.L. and Nieto, M.A. 2007. Snail1 is a transcriptional effector of FGFR-3 signaling during chondrogenesis and achondroplasias. *Dev. Cell* 13: 872-883.

CHROMOSOMAL LOCATION

Genetic locus: CCDC111 (human) mapping to 4q35.1; Ccdc111 (mouse) mapping to 8 B1.1.

SOURCE

CCDC111 (N-13) is an affinity purified rabbit polyclonal antibody raised against a peptide mapping near the N-terminus of CCDC111 of human origin.

PRODUCT

Each vial contains 100 µg IgG in 1.0 ml of PBS with < 0.1% sodium azide and 0.1% gelatin.

Blocking peptide available for competition studies, sc-136602 P, (100 µg peptide in 0.5 ml PBS containing < 0.1% sodium azide and 0.2% BSA).

RESEARCH USE

For research use only, not for use in diagnostic procedures.

APPLICATIONS

CCDC111 (N-13) is recommended for detection of CCDC111 of mouse, rat and human origin by Western Blotting (starting dilution 1:100, dilution range 1:50-1:500), immunoprecipitation [1-2 µg per 100-500 µg of total protein (1 ml of cell lysate)], immunofluorescence (starting dilution 1:25, dilution range 1:25-1:250) and solid phase ELISA (starting dilution 1:30, dilution range 1:30-1:3000); non cross-reactive with other CCDC family members.

CCDC111 (N-13) is also recommended for detection of CCDC111 in additional species, including canine, bovine and porcine.

Suitable for use as control antibody for CCDC111 siRNA (h): sc-89324, CCDC111 siRNA (m): sc-142056, CCDC111 shRNA Plasmid (h): sc-89324-SH, CCDC111 shRNA Plasmid (m): sc-142056-SH, CCDC111 shRNA (h) Lentiviral Particles: sc-89324-V and CCDC111 shRNA (m) Lentiviral Particles: sc-142056-V.

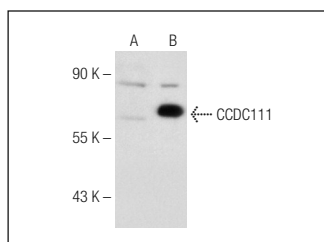
Molecular Weight of CCDC111: 64 kDa.

Positive Controls: CCDC111 (h): 293T Lysate: sc-116974.

RECOMMENDED SECONDARY REAGENTS

To ensure optimal results, the following support (secondary) reagents are recommended: 1) Western Blotting: use goat anti-rabbit IgG-HRP: sc-2004 (dilution range: 1:2000-1:100,000) or Cruz Marker™ compatible goat anti-rabbit IgG-HRP: sc-2030 (dilution range: 1:2000-1:5000), Cruz Marker™ Molecular Weight Standards: sc-2035, TBS Blotto A Blocking Reagent: sc-2333 and Western Blotting Luminol Reagent: sc-2048. 2) Immunoprecipitation: use Protein A/G PLUS-Agarose: sc-2003 (0.5 ml agarose/2.0 ml). 3) Immunofluorescence: use goat anti-rabbit IgG-FITC: sc-2012 (dilution range: 1:100-1:400) or goat anti-rabbit IgG-TR: sc-2780 (dilution range: 1:100-1:400) with UltraCruz™ Mounting Medium: sc-24941.

DATA



CCDC111 (N-13): sc-136602. Western blot analysis of CCDC111 expression in non-transfected: sc-117752 (A) and human CCDC111 transfected: sc-116974 (B) 293T whole cell lysates.

STORAGE

Store at 4° C, **DO NOT FREEZE**. Stable for one year from the date of shipment. Non-hazardous. No MSDS required.

PROTOCOLS

See our web site at www.scbt.com or our catalog for detailed protocols and support products.